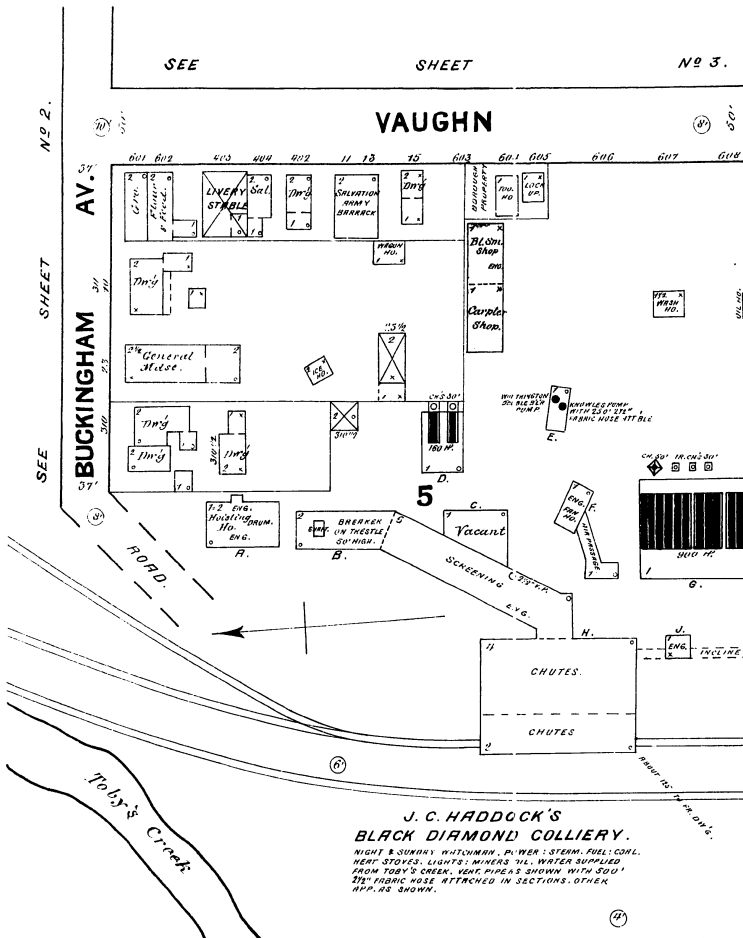


VAUGHN



J. C. HADDOCK'S BLACK DIAMOND COLLIERY.

NIGHT & SUNDAY WATCHMAN, P.M. MEN - STEAM, FUEL - COAL, HEAT STOVES, LIGHTS; MINERS OIL, WATER SUPPLIED FROM TOBY'S CREEK, VENT PIPES SHOWN WITH SOU' 25' IN DRIBBING HOLES ATTACHED IN SECTIONS, OTHER PIPES SHOWN.

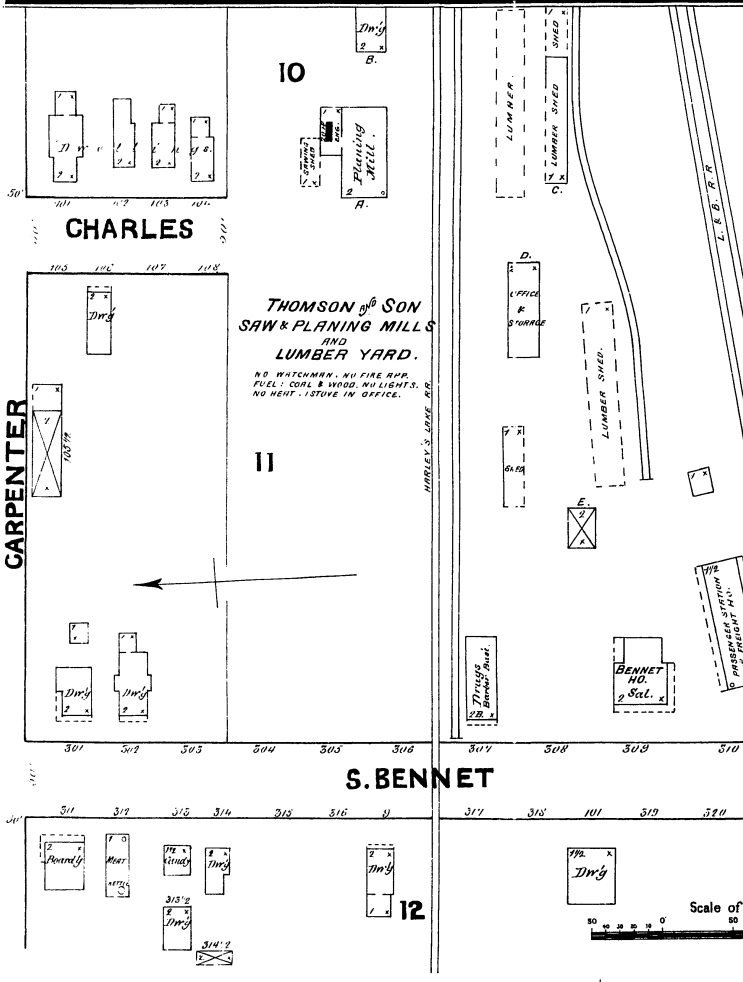
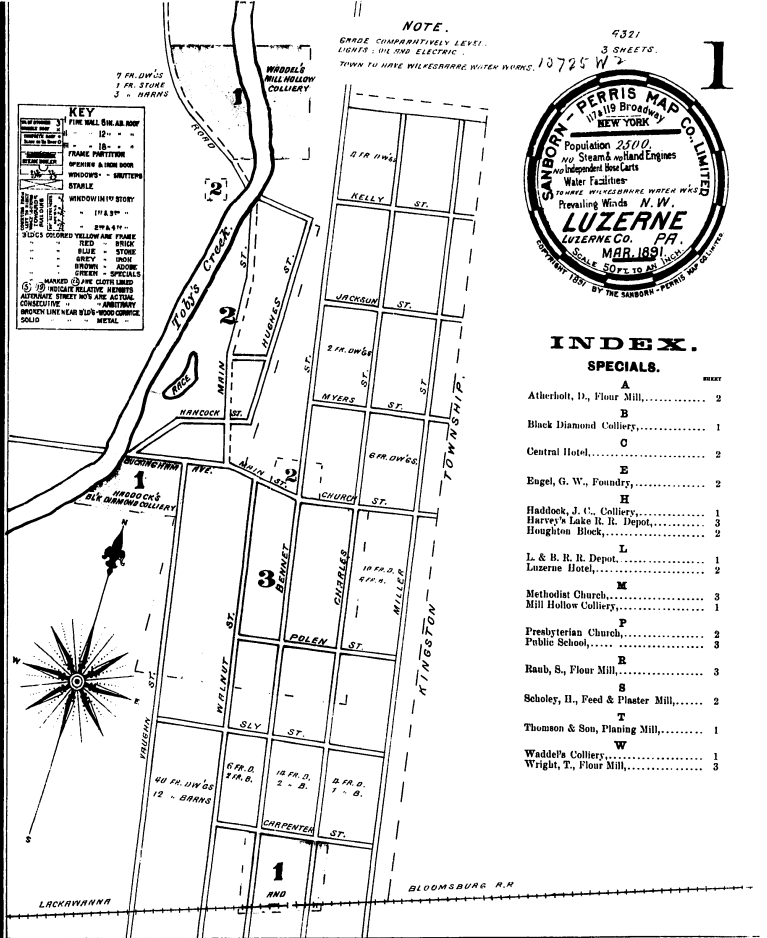
NOTE. GRADE COMPARATIVELY LEVEL. LIGHTS ON ONE ELECTRIC TOWN TO HAVE WICKED BARRIE, WITEN BARRIS. 10725 W



INDEX.

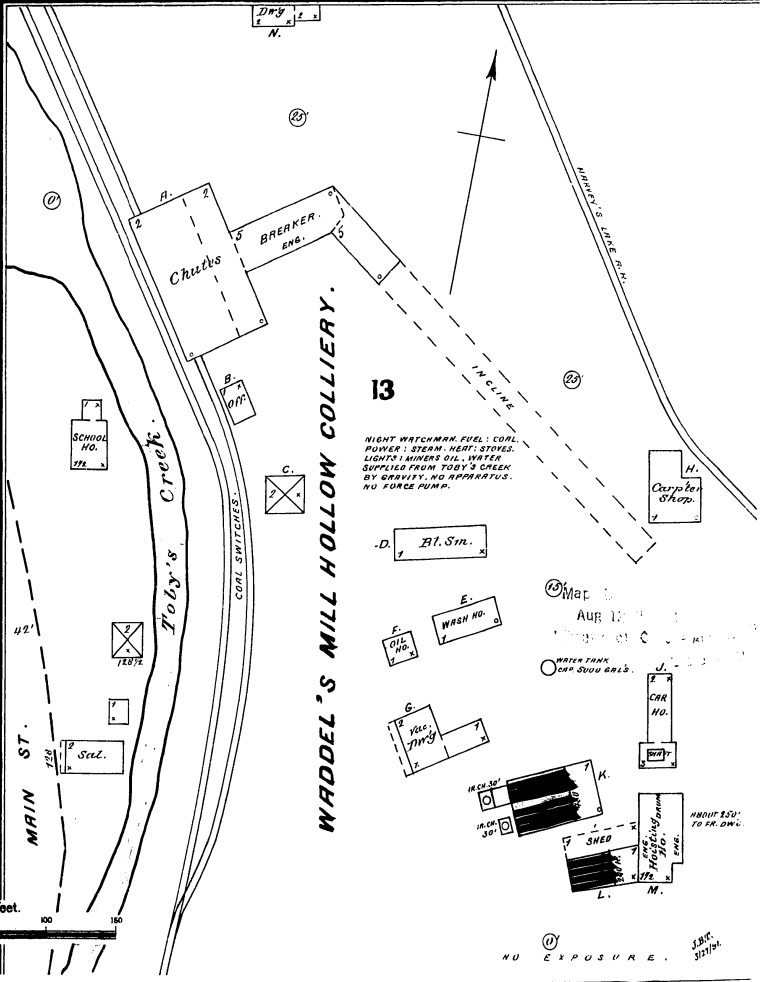
SPECIALS.

Letter	Name	Page
A	Atherholt, H., Flour Mill,	2
B	Black Diamond Colliery,	1
C	Central Hotel,	2
E	Egels, G. W., Foundry,	2
H	Haddock, J. C., Colliery,	1
H	Harvey's Lake L. R. Depot,	3
H	Houghton Block,	2
L	L & B. R. R. Depot,	1
L	Luzerne Hotel,	2
M	Methodist Church,	3
M	Mill Hollow Colliery,	1
P	Presbyterian Church,	2
P	Public School,	3
R	Raub, S., Flour Mill,	3
S	Scholey, H., Feed & Plaster Mill,	2
T	Thomson & Son, Planing Mill,	1
W	Waddell's Colliery,	1
W	Wright, T., Flour Mill,	3



THOMSON & SON SAW & PLANING MILLS AND LUMBER YARD.

NO WATCHMAN, NO FIRE APP. FUEL - COAL & WOOD, NO LIGHTS, NO HEAT, 1 STOVE IN OFFICE.



WADDELL'S MILL HOLLOW COLLIERY.

NIGHT WATCHMAN, FUEL - COAL, PUMPER'S STEAM, HEAT STOVES, LIGHTS; MINERS OIL, WATER SUPPLIED FROM TOBY'S CREEK BY SLOTTED HOLES, NO BARRETTES, NO FORCE PUMP.

Scale of Feet.

NO EXPOSURE. 1891