

GREENBUSH ST
JOHANNITA PIP. RAIL 3
274

WARD-I

232

230

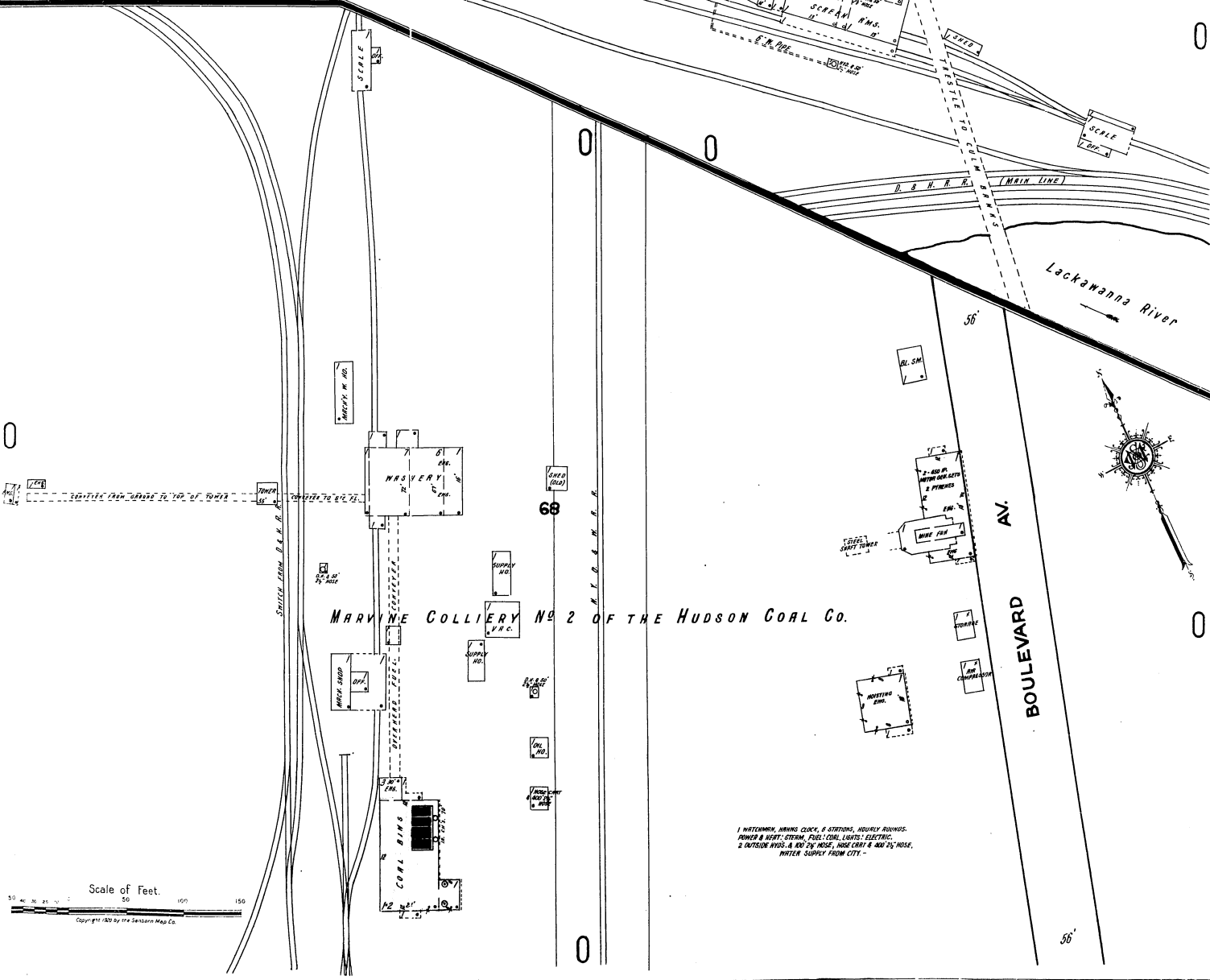
N. MAIN AV.

MARVINE COLLIERY No 1 OF THE HUDSON COAL CO.

48

1 WATERMEN 2 WINGS CLOCK, 8 STITTING EACH, HOURLY ROUNDS.
POWER & HEAT, STEAM, FUEL, COAL, LIGHTS, ELECTRIC.
WYDS. & HOSE AS SHOWN, HOSE CART & 300' 1/2" HOSE, WATER
SUPPLY FROM CITY MAINS, 6" DIA.

231

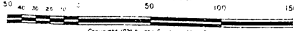


MARVINE COLLIERY No 2 OF THE HUDSON COAL CO.

BOULEVARD

1 WATERMEN, WINGS, CLOCK, 8 STITTING, HOURLY ROUNDS.
POWER & HEAT, STEAM, FUEL, COAL, LIGHTS, ELECTRIC.
2 OUTSIDE WYDS. & 300' 1/2" HOSE, HOSE CART & 300' 1/2" HOSE,
WATER SUPPLY FROM CITY.

Scale of Feet.



Copyright 1930 by the Searson Map Co.