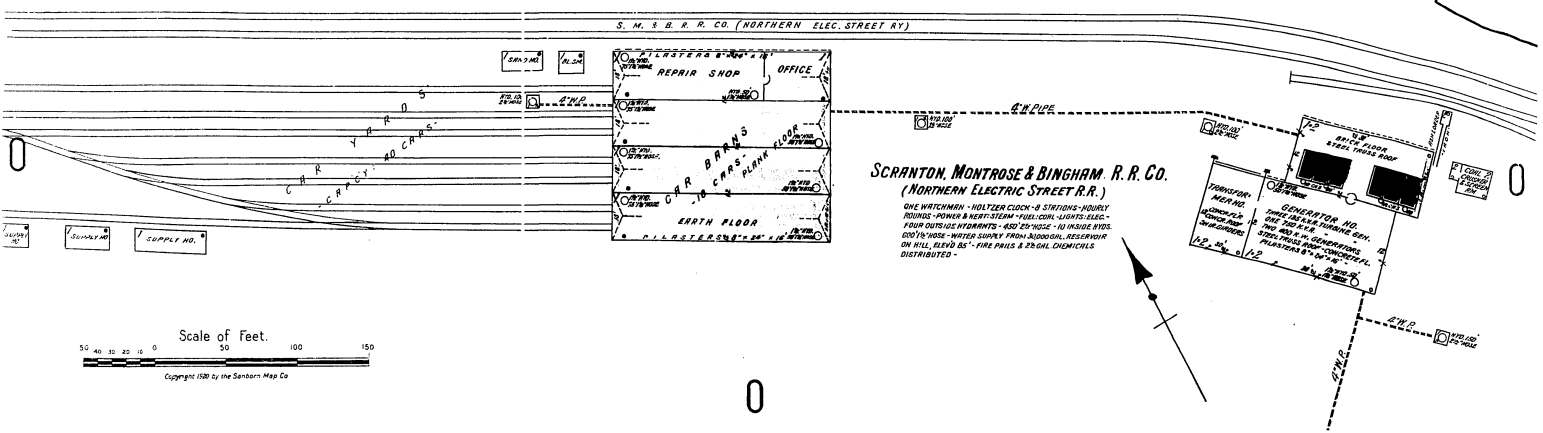


**Von Storch Collieries Coal Co.**  
 FORMERLY: THE DELAWARE & HUDSON CANAL CO'S COLLIERY, Von Storch BREWER.  
**COAL PREPARATION**  
 ONE INSIDE AND ONE OUTSIDE WATCHMAN NIGHTS AND SUNDAYS - WIRE CLOCKS - 8 STATIONS EACH - HOURLY ROUNDS - POWER-ELECTRIC AND STEAM - HEAT-STEAM - LIGHTS-ELECTRIC - ONE POSE CRAY - 1500' 1/2" HOSE IS SHOWN - 40 CHIMNEY EXTINGUISHERS - FIVE TRUCKS AND ROAD BONES AND ARRAYS OF WATER DISTRIBUTED THROUGHOUT - FIRE BRIGADE ORGANIZED, 10 MEMBERS, DRILLED TWICE A MONTH - CITY WATER, PRESSURE 100 LBS.

**BROOKSIDE**  
 Located 1/4 Mile N. of Dalton.



**SCRANTON, MONTROSE & BINGHAM R.R. CO.**  
 (NORTHERN ELECTRIC STREET R.R.)  
 ONE WATCHMAN - HOLYER CLOCK - 8 STATIONS - HOURLY ROUNDS - WIRE & ELECTRIC - HOSE - LIGHTS - ELECTRIC - FOUR OUTSIDE WATERWAYS - 400' 2" HOSE - 10 INSIDE BIDS - 100' 1/2" HOSE - WATER SINKY PANS - ADDITIONAL RESERVOIR ON HILL, ELEV 85' - FIRE PAILS & 25-GAL. CHIMNELS DISTRIBUTED -

