

**COMMONWEALTH OF PENNSYLVANIA**

**RAYMOND P. SHAFER**

**Governor**



**KEMP LIBRARY**

East Stroudsburg State College  
East Stroudsburg, Pennsylvania

**DEPARTMENT of MINES and MINERAL INDUSTRIES**

**H. B. CHARBURY**

**Secretary**

**ANTHRACITE and BITUMINOUS DIVISION**

**1969**

**ANNUAL REPORT**

**Harrisburg**

**170945**

## TABLE OF CONTENTS

	<i>Page</i>
Governor Raymond Philip Shafer, Photograph and Biography .....	6 and 7
Secretary H. B. Charnbury, Photograph and Biography .....	8 and 9
A Report on The Accomplishments of Pennsylvania's Department of Mines and Mineral Industries During 1969 .....	11-14-16
Illustrations .....	10-12-13 15-17

## ANTHRACITE DIVISION

## STATISTICAL REPORTS:

Production, Employes and Fatalities—1870 to 1969 .....	21
Forty-one Year Study of Anthracite, by County .....	23
Production by County .....	31
Production by District .....	32
Summary of Anthracite Mines, Production and Fatalities .....	33
Production, How Shipped, Average Days Worked .....	34
Small Mine Report .....	35
Anthracite Division .....	36
Classification of Employes—By District .....	37
Operators Producing 50,000 Tons or More .....	38
Production and Accident Record for Operators Having a Fatality .....	39
Causes of Fatal Accidents—By County .....	40
Fatal Accident Victims—1969 .....	41
Accidents in Which Five or More Persons Were Killed—1847 to 1969 .....	42
County-District Cross Reference .....	46
Map of Anthracite Strip Mine Districts .....	47
Map of Anthracite Deep Mine Districts .....	48

## PRODUCTION TABLE:

Production, etc., of Anthracite Operators—By District .....	51
Anthracite Operators .....	93
Anthracite Breakers, Washeries and Preparation Plants .....	101

622.3  
p384ac  
1969

BITUMINOUS COAL DIVISION

STATISTICAL REPORTS:

Production, Employes and Fatalities—1877 to 1969 .....	105
Summary of Bituminous Mines, Production and Fatalities by District .....	107
Production of Coal, Employes and Fatalis by County .....	108
Summary of Coal Production by District .....	109
Small Mine Report .....	110
Summary of Employes by District .....	111
Operators Producing Over 375,000 tons of Deep Mined Coal .....	112
Operators Producing Over 200,000 tons of Strip Mined Coal .....	113
Causes of Bituminous Fatal Accidents by County .....	114
Bituminous Fatal Accident Victims—1969 .....	115
Accidents in Which Five or More Persons Were Killed—1884 to 1969 .....	116
County-District Cross Reference .....	118
Thirty-three Year Study of Bituminous Coal Division by County .....	119
Map of Bituminous Coal Deep Mine Districts .....	134
Map of Bituminous Coal Strip Mine Districts .....	135

PRODUCTION TABLE:

Production, etc., of Bituminous Coal Operators by District .....	139
--	-----

GEOGRAPHICAL TABLE:

Geographical Locations, etc., of Bituminous Coal Operations by District .....	201
BITUMINOUS COAL OPERATORS .....	251
BITUMINOUS CLEANING PLANTS .....	261

REPORT OF OIL AND GAS DIVISION:

Oil and Gas Conservation Commission Annual Report of 1969 .....	265
Tables 1 to 8 .....	274

DIRECTORY:

Department of Mines and Mineral Industries Directory .....	305
--	-----



COMMONWEALTH OF PENNSYLVANIA  
DEPARTMENT OF MINES AND  
MINERAL INDUSTRIES  
HARRISBURG

H. B. CHARMBURY  
THE SECRETARY

April 15, 1970

The Honorable Raymond P. Shafer  
Governor  
Commonwealth of Pennsylvania  
Harrisburg, Pennsylvania

Dear Governor Shafer:

In compliance with the Act of April 14, 1903, I  
transmit herewith the Report of the Department of Mines and  
Mineral Industries for the year ending December 31, 1969,  
covering in detail the operations in the Anthracite and  
Bituminous Coal Divisions of Pennsylvania.

Respectfully submitted,

*H. B. Charmbury*  
H. B. Charmbury

RAYMOND PHILIP SHAFER  
GOVERNOR, COMMONWEALTH OF PENNSYLVANIA



Pennsylvania's Governor Raymond Philip Shafer was born March 5, 1917, in New Castle, Pennsylvania, and raised in Meadville where he attended the public schools. At his high school commencement in 1934 he proved that a star basketball player could be class valedictorian.

His athletic-academic abilities were displayed on a greater scale at Allegheny College. A political science major, he made Phi Beta Kappa, won nine varsity letters (basketball, soccer and track), was class president each year and was the student body president in his senior year.

After graduation in 1938 he went to Yale Law School. Members of his law fraternity included future Governor Scranton, two future U. S. Supreme Court Justices (Stewart and White), a future U. S. Senator (Dominick, Colorado), future author (Walter S. Lord) and others who made their mark on the national scene. LIFE magazine in 1966 reprinted this extraordinary group's portrait taken in 1940. Shafer had then become Lieutenant Governor of Pennsylvania and was the Republican nominee for Governor.

After getting his law degree in June 1941, Shafer, the following month, married his college sweetheart, Jane Harris Davies of Pittsburgh. In August the couple moved to New York City where Shafer was associated with Secretary of War Stimson's law firm (Winthrop, Stimson, Putnam and Roberts). In 1942 he was commissioned an ensign in the Navy. Before returning to inactive duty in 1945, he had logged over 80 combat missions in PT Boats, brought General MacArthur back to Corregidor in fulfillment of the famous promise, and had added the Bronze Star and the Purple Heart to his campaign medals. The official U. S. Navy Volume on PT-Boat Operations carries a photograph of Shafer, aboard a rubber raft, evacuating paratroopers pinned down by sniper fire on a small Pacific Island.

After the war, Shafer returned to Meadville to practice law. He was affiliated with the office of the late former Judge Mook, and subsequently became a partner in the firm of Thomas, Shafer, Dornhaffer and Swick. He taught business law at Allegheny College while practicing. In 1947 he was elected district attorney of Crawford County on both tickets, a feat he repeated in 1951. In 1958 he was elected to the Pennsylvania Senate, representing Mercer and Crawford Counties. In 1962 he was elected Lieutenant Governor of Pennsylvania, and two years later was the acting Chairman of the Pennsylvania delegation to the 1964 Republican National Convention in San Francisco. In November 1966 he was elected Governor, marking the first time in Pennsylvania's political history that a lieutenant governor successfully ran for the highest office.

An ardent sportsman, Governor Shafer is a top-flight golfer. His civic activities are legion. He holds memberships in many community and fraternal organizations, together with his professional associations as a member of the Bar.

Governor and Mrs. Shafer have three children: Diane, Raymond, Jr., and Jane as well as two grandchildren—(grandson) "Flip", age seven (son of Raymond, Jr.) and (granddaughter) Shona Elizabeth (born February 15, 1970), daughter of Diane.

DR. H. B. CHARMBURY  
PENNSYLVANIA SECRETARY OF MINES  
AND MINERAL INDUSTRIES



Pennsylvania's Secretary of Mines and Mineral Industries, Dr. H. Beecher Charmbury, was born September 21, 1914 in Hanover, Pennsylvania, and educated in Hanover public schools.

Dr. Charmbury commands a wealth of professional education and experience in his post as Secretary of Mines and Mineral Industries.

He was first appointed to this position by former Governor William W. Scranton in January, 1963, and subsequently reappointed by present Governor Raymond P. Shafer in December, 1966.

He received his A. B. degree in chemistry, cum laude, from Gettysburg College in 1936, and his Master's degree in chemistry from Pennsylvania University the following year. He was awarded his Ph. D. degree in Fuel Technology from the Pennsylvania State University in 1942. He was also awarded his Sc. D. at Gettysburg College in June 1969.

Prior to his appointment as Secretary of Mines and Mineral Industries, Dr. Charmbury has been associated with The Pennsylvania State University since 1937 and currently is on leave of absence from that school. He started out as a research assistant in the Department of Petroleum and Natural Gas, and from there went on to become Professor and Head of the Department of Mineral Preparation at Penn State in 1953.

He was one of the first people to be invited as a lecturer at the Third International Coal Preparation Congress in Liege, Belgium in 1958, and was also a lecturer at the First European Symposium on Coal Size Reduction in Frankfurt, Germany in 1962.

The firms to which he has been a consultant on problems related to coal, metallic and non-metallic minerals, as well as air pollution, reads like a blue chip list of American industry. A partial list includes the Molybdenum Corporation of America; Rochester and Pittsburgh Coal Company; Esso Research and Engineering Company; The Babcock and Wilcox Company; The American Tool and Supply Company; The Lampa Mining Company, Ltd.; Corn Products Company; "Rock Products" (Maclean-Hunter Publications); and Titan Metal Manufacturing Company. In addition he has also served as consultant to many municipalities on similar problems.

He has authored numerous articles on coal and other mineral technology for such publications as "Mechanization", "Utilization", "Rock Products", "Mineral Industries", "Brick and Clay Record", and "Mining Engineering". Many of his technical papers have been translated and reprinted abroad in German, French and Chinese publications.

As a renowned authority on coal, its preparation and usage, as well as other minerals, Dr. Charmbury has also presented technical papers before such conclaves as the American Mining Congress, the American Chemical Society, and the National Association of Industrial and Mechanical Engineers.

He is listed in *American Men of Science*, *Who's Who in American Education*, *Who's Who in Engineering*, *Who's Who in the East*, and *Leaders in American Science*.

As Secretary of Mines and Mineral Industries in Pennsylvania, Dr. Charmbury serves as chairman of the following boards and commissions: Bituminous Land Reclamation Board; Coal Research Board; State Mine Subsidence Insurance Fund; Oil and Gas Conservation Commission; Anthracite and Bituminous State Mine Inspectors' Examining Board; Oil and Gas Inspectors' Examining Board; and the Anthracite Mine Drainage Commission.

In addition, he is vice-chairman of the Anthracite Allocation Committee as well as a member of the State's Sanitary Water Board and the Air Pollution Commission. He also is a member of the Board of Trustees for the Pennsylvania State University.

He is a member of the Lutheran Church, A. F. & A. M., and a past exalted ruler and past district deputy grand exalted ruler of the B. P. O. Elks. He currently serves as a National Grand Trustee to this fraternal order.

## A REPORT ON THE ACCOMPLISHMENTS OF PENNSYLVANIA'S DEPARTMENT OF MINES AND MINERAL INDUSTRIES DURING 1969

by

*Dr. H. B. Charmbury, Secretary*

Tremendous progress has been made over the past year in areas of this Department's primary concern.

For example, Pennsylvania's coal industry has not only made the Commonwealth the electricity capital of the nation, but it is also the best example in the state of an industry that's doing a good job in complying with our air and stream pollution laws.

**Two of my main** objectives when I first became Secretary of Mines and Mineral Industries back in 1963, were to do all I could to help the coal industry make Pennsylvania the electric power producing capital, and to see to it that the technological answers to this industry's air and stream pollution problems were provided.

I am most happy to report that both of those goals have been overwhelmingly realized during the past year.

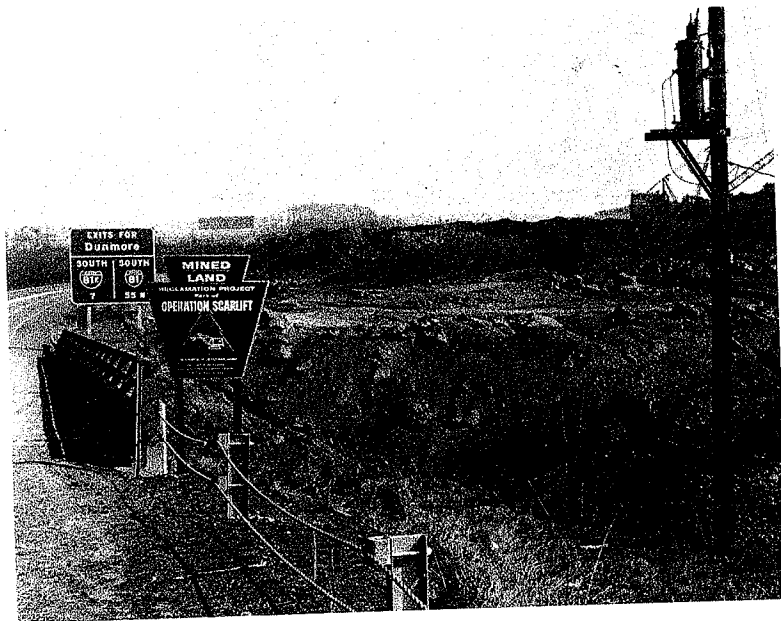
By and large, the coal industry of Pennsylvania, at least, has succeeded in reversing its former image as a wholesale contributor to the air and water pollution problems confronting our State. We're still fighting scars from the past, and we're making great strides in correcting them, too. But future generations of Pennsylvanians should not have to worry about the current coal industry from a pollution standpoint.

**As a member of** both the Sanitary Water Board and Air Pollution Commission, I have seen three major factors at work during the past year which, to my way of thinking, have all but eliminated the surface and deep coal mine industries from the roles of major industrial polluters in Pennsylvania. These are 1. our strong, but fair anti-pollution laws, 2. a healthy attitude on the part of the overall coal industry to comply with those laws, and 3. strong, but equally fair, enforcement by our own Department of Mines and Mineral Industries.

These factors may not exist in other coal mining states, in fact, I'm sure they don't all prevail at the same time. But they have all been combined in Pennsylvania to make our state a showcase of conservation achievement for the rest of the nation. For example, during the past year, our Department was host on several field trips to sportsmen, officials, and even other coal industry representatives from West Virginia, Kentucky, Tennessee, Ohio and the TVA. On each of these occasions, the visitors expressed amazement over the technology that was manifested and the progress we have made in the areas of strip mine land reclamation and mine acid water control under our present laws.



This strip mine reclamation project, in Northumberland County, is typical of the kind of restoration being performed by both the active surface mining industry as well as by the Commonwealth Department of Mines in its 'Scarlift' action program. This area is in the Ferndale section near Shamokin.



In June, 1967, workmen from the Department of Mines and Mineral Industries installed the 'Scarlift' project sign along I-81 and near the bank, signifying the beginning of the end for this mountain of air pollution. Bank temperatures ranged well over a thousand degrees. Lower photo shows area as it looked near project's end.

The Department's abandoned mine water reclamation segment of 'Scarlift' got a boost during 1968 with the purchase and deployment of five "fire engine" portable neutralization plants. Used for emergency purposes throughout both the Anthracite and Bituminous regions, these little plants are proving significant in prevention of huge acid drainage "slugs" which materially affect aquatic life in our streams and rivers. Photos show two of the portable plants in use at Hillsdale, Grant Township, Indiana County.

**By way of review** of the past year, current surface or strip mine operators in the state restored 9,306 acres of despoiled lands during their active mining operations in 1969. They have averaged close to 10,000 acres per year in restoration for the past four years. Anthracite strip mine operators restored 432.56 acres in 1969.

In addition, deep coal mine operators now have some 140 treatment plants onstream in controlling their mine water wastes, while applications for another 204 such plants are now before the state for approval.

Not only that, but solid coal wastes or refuse from these active deep mines are being deposited, compacted, covered, and then seeded with suitable plant life so as not to create any new mountainous banks that are unsightly and potential air pollution hazards, too.

**Bituminous coal production** went up over the previous year, from 75,714,611 tons to 78,185,036 tons through 1969.

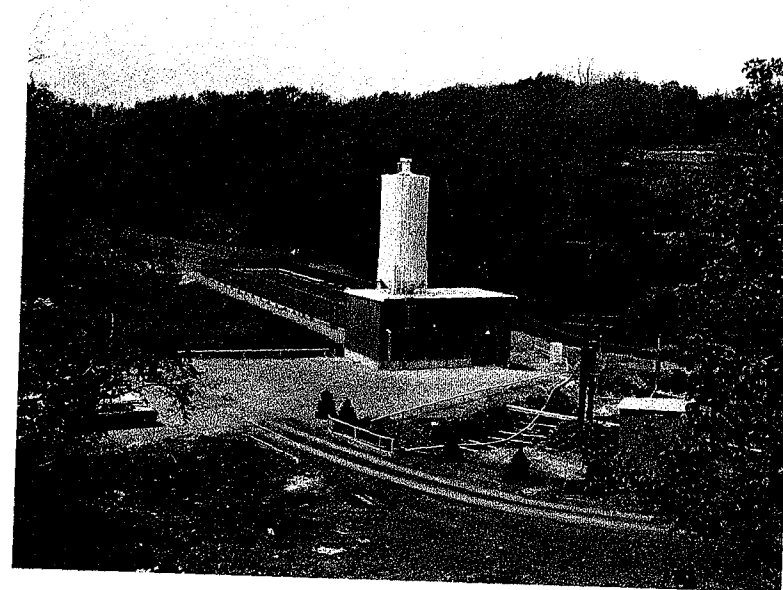
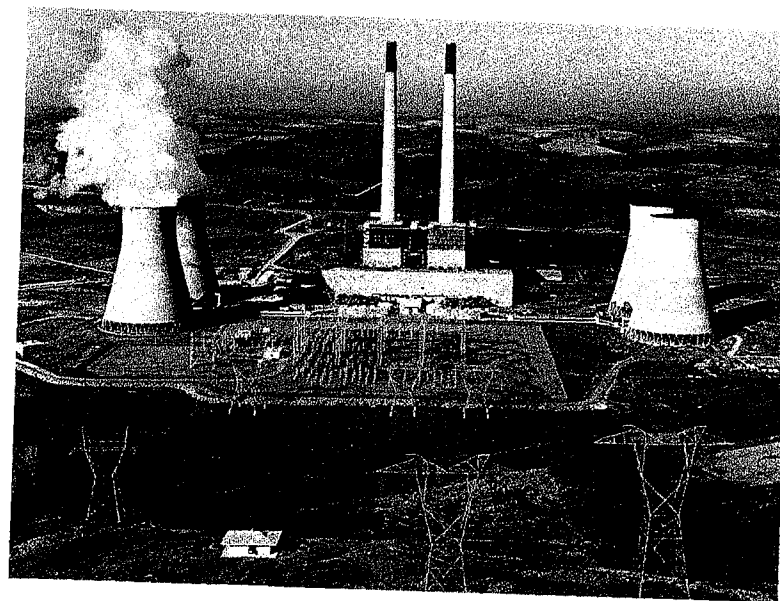
The future of the coal-by-wire concept has also never been brighter due to the instant success of mine-mouth power installations and the unit coal train. As evidence, witness the fact that the Penn Central Railroad is now carrying Pennsylvania-mined bituminous coal to 51 different electric power stations scattered throughout the northeastern United States. These coal-burning installations have a combined power output of 24,304,320 KW.

Of that total, the Chestnut Ridge energy center located in the central highlands area of Pennsylvania is producing 6,757,130 KW, and that surpasses the combined output of Niagara Falls, Grand Coulee and Hoover Dams. Chestnut Ridge is made up of eight mine-mouth power installations, such as the Conemaugh complex near Johnstown and the Keystone complex near Indiana, Pennsylvania. These mine-mouth power installations are currently employing 10,000 men, and by 1975, it is estimated that they will be employing 14,000 men all told. Coal production in the central highlands area totalled 26 million tons in 1965, and I expect that figure will be doubled by 1975 when planned new mine-mouth installations go into operation.

On the other hand, anthracite production continued its downward trend, however, due to market failures experienced over the past years. Through 1969, only 10,165,805 tons were produced, while 11,025,482 tons were produced during the corresponding period in 1968.

**Control of dust** and gas accumulations in the deep mines through better ventilation procedures, along with more rigid roof control, remain pressing problems. Critical, too, is the urgency of finding trained manpower to fulfill the coal industry's market commitments in the months and years ahead, but unquestionably a key factor as to whether or not the industry finds that much needed manpower will be the intensity of our combined efforts to minimize the hazards created by dust, gas and roof falls.

During 1970, I intend to see that research we began two years ago on these problems is completed and brought to the work faces in the mines so that we can prove or disapprove the results.



**KEYSTONE GENERATING STATION** every hour converts 650 tons of Central Pennsylvania coal into 1,800,000 kilowatt-hours of electricity for transmission to 5,000,000 customers of its seven owning private utilities in Pennsylvania, Maryland, New Jersey, Delaware, Virginia and the District of Columbia. It is the bellwether of a huge energy development which makes Chestnut Ridge the most powerful energy center in the nation. **PHOTO BELOW** shows typical example of a coal industry lime neutralization treatment facility, one of some 160 active facilities treating mine waste water in Commonwealth by the state's coal companies. This plant, owned by Pittsburgh Coal Division of Consol, neutralizes some 1.1 million gallons per day from the Montour No. 4 mine in Washington County.



We must find the answers, and we will, just as we did on acid mine drainage.

**Our progress** in mine area restoration work during the past year is also nothing less than a landmark conservation achievement which has vaulted Pennsylvania to the point of being 10 years ahead of other states plagued by similar problems.

In this regard, there is no question in my mind, that what Pennsylvania has accomplished and the progress we have made in attacking mine drainage pollution and air pollution from burning refuse banks constitutes not only a technological breakthrough, but a major scientific contribution to the world, wherever coal is or has been mined.

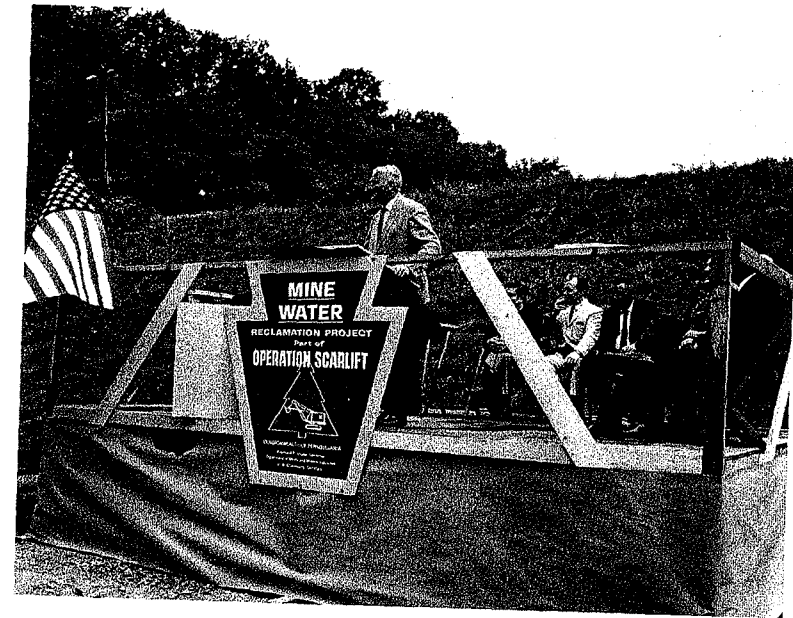
I must credit the \$500 million Land and Water Conservation Act (Project 500), which provides our Department with \$200 million in project money over a 10-year span, as the financial catalyst which is helping us to transform the coal regions of our State from an area of blight, to one of new industrial and tourist potential. Without the bond issue money, which is our principal source of funds, we would be just like the other coal mining states—and that is nowhere when it comes to comprehensive action and results.

**The rest of the Nation** seems to be just now awakening to the critical need for environmental pollution controls, while we have been working in the field for the past seven years doing something about them. If the Nation, as President Nixon has indicated, is going to undertake an all-out effort on air and water pollution control, then certainly Pennsylvania's progress over the past few years on these matters should put us in the best position of any of the states to achieve maximum results.

Depending on the Federal money allocated in the years ahead, and what's equally important, the dispatch with which that money reaches the State agencies to do the job, we can foresee the time within the next 10 years when Pennsylvania's coal regions will truly enhance the overall beauty of the state, not detract from it.

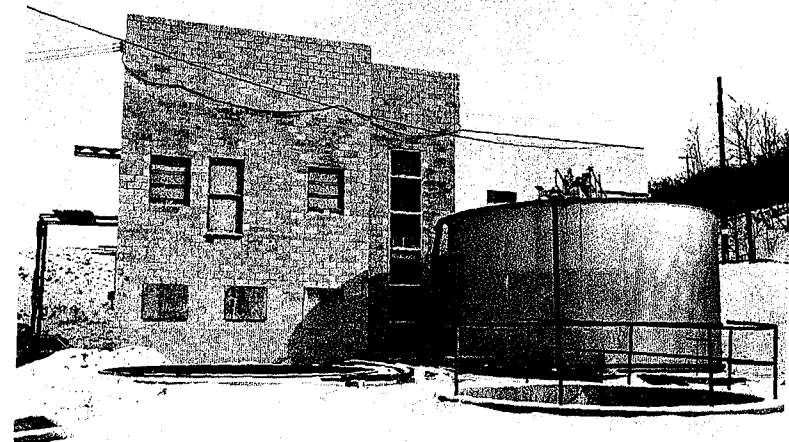
**Our Department successfully** completed a total of 99 anthracite and bituminous mine area reclamation projects under 'Operation Scarlift' during 1969, at a cost of \$6,703,086. Besides the bond issue, additional funds for this program were supplied to the Department from direct allocations by the legislature, matching grants from the federal government and Coal Research Board field-demonstration type grants.

Of the total, there were 28 stream pollution abatement projects completed at a cost of \$585,836; eight air pollution elimination projects (burning refuse banks), extinguished at a cost of \$2,430,258.03; 10 mine subsidence prevention projects completed at a cost of \$2,065,825.41; 14 underground mine fire extinguishment projects completed at a cost of \$1,309,826.33; 13 strip mine reclamation projects completed on public lands at a cost of \$286,879.75; and 26 abandoned deep mine openings sealed at a cost of \$24,457.05.



**DR. CHARBURY DEDICATES NEW BURGETTSTOWN PLANT**

Mines Secretary H. B. Charmbury tells crowd assembled for groundbreaking of new Burgettstown (Washington County) ion exchange treatment plant that "This new plant signifies the dawn of a golden era of conservation for Pennsylvania". Burgettstown plant will purify up to a million gallons daily of mine drainage polluted Raccoon Creek which flows into Dinsmore Reservoir, and is main supply source of Smith Township Water Authority. Photo below shows plant near completion. It will be dedicated in the summer of 1970.





**ANTHRACITE  
DIVISION  
STATISTICAL  
REPORTS**

COMMONWEALTH OF PENNSYLVANIA  
DEPARTMENT OF MINES AND MINERAL INDUSTRIES  
ANTHRACITE DIVISION  
TOTAL PRODUCTION OF COAL, PRODUCTION FROM STRIPPINGS AND WASHERIES  
EMPLOYEES, FATALITIES, ETC.  
1870 - 1969

Year	Total production (net tons) #	Washery production (net tons)* #	Stripping production (net tons)* #	Employees #	Fatal- ities #	Produc- tion per fatality #	Fatal- ities per million tons #	No. of ins- pec- tors #
1870	14,172,004			35,600	211	67,166	14.89	5
1871	15,532,252			37,488	210	73,963	13.52	5
1872	15,567,973			44,745	223	69,811	14.32	5
1873	21,001,521			48,199	264	79,551	12.57	5
1874	19,930,240			53,402	231	86,278	11.59	5
1875	23,402,646			69,966	238	98,330	10.17	6
1876	23,440,666			70,474	228	102,810	9.73	6
1877	24,727,213			66,842	194	127,460	7.85	6
1878	20,900,966			63,964	187	111,770	8.95	6
1879	31,036,600			68,847	262	118,460	8.44	6
1880	27,974,532			73,373	202	138,488	7.22	6
1881	34,202,558			76,031	273	125,284	7.98	7
1882	35,097,430			82,200	295	118,839	8.41	6
1883	37,747,369			91,421	323	116,865	8.56	6
1884	36,468,738			101,073	332	109,446	9.10	6
1885	38,232,155			100,320	332	115,157	8.68	7
1886	38,950,932			103,044	279	139,609	7.16	7
1887	42,156,300			106,517	316	133,406	7.50	7
1888	46,635,037			122,218	364	128,118	7.81	8
1889	43,650,768			119,646	397	109,952	9.09	8
1890	44,986,286			119,919	378	119,011	8.40	7
1891	49,701,322			123,308	428	116,125	8.61	8
1892	51,226,978			130,300	418	122,553	8.16	8
1893	52,841,110			138,069	456	115,880	8.63	8
1894	50,966,920	386,960		139,939	446	114,276	8.75	8
1895	56,948,756	386,534		143,705	421	135,270	7.39	8
1896	53,843,250	527,809		150,088	502	107,257	9.32	8
1897	52,581,036	732,743		149,557	423	124,305	8.04	8
1898	52,812,675	697,759		142,420	411	129,498	7.78	8
1899	60,518,331	1,059,426		140,604	461	131,276	7.62	8
1900	57,363,396	1,818,170		143,824	411	139,570	7.16	8
1901	67,094,665	2,009,864		147,651	513	130,789	7.65	8
1902	41,340,935	2,965,792		148,139	300	137,803	7.26	8
1903	75,232,585	4,119,258		151,827	518	145,237	6.89	15
1904	73,594,369	3,440,420		161,330	595	123,688	8.08	15
1905	78,647,020	3,897,688		168,254	644	122,123	8.19	15
1906	72,139,510	4,880,402		166,175	557	129,514	7.72	19
1907	86,056,412	5,630,169		168,774	708	121,549	8.23	20
1908	83,543,243	4,635,923		174,503	678	123,220	8.12	20
1909	80,223,833	5,206,562		171,195	567	141,488	7.07	20
1910	83,683,994	5,412,167		168,175	601	139,241	7.18	20
1911	90,917,176	4,555,457		173,338	699	130,067	7.69	21
1912	84,426,869	4,317,161		175,098	601	140,477	7.12	21
1913	91,626,964	2,934,157		175,310	624	146,838	6.81	21
1914	91,189,641	2,702,537		180,899	600	151,983	6.58	21
1915	89,377,706	3,418,427		177,339	588	152,003	6.58	21
1916	87,680,198	4,432,606		159,169	565	155,186	6.44	25
1917	100,445,299	6,408,277		156,148	581	172,883	5.78	25
1918	99,445,794	7,246,454		148,226	556	178,859	5.59	25
1919	87,838,024	3,616,675		153,780	636	138,110	7.24	25
1920	89,636,036	5,435,697		149,117	490	182,931	5.47	25
1921	90,358,642	1,842,096		161,926	546	165,492	6.04	25
1922	53,910,201	2,525,402		159,880	300	179,701	5.56	25
1923	92,653,641	4,212,001		158,764	515	179,910	5.56	25
1924	87,277,449	1,441,796		162,503	496	175,963	5.68	22
1925	61,334,145	894,187		163,825	401	152,953	6.54	18
1926	83,874,500	1,365,175		168,734	455	184,340	5.42	18
1927	79,367,154	1,841,440		167,648	492	161,315	6.20	25
1928	74,552,312	1,614,863		160,721	447	166,784	6.00	25
1929	72,985,844	878,599		153,422	483	151,109	6.62	25
1930	68,776,559	890,389		151,171	444	154,902	6.46	25
1931	59,115,387	1,468,572	%	138,400	384	153,946	6.50	25

FORTY-ONE YEAR STUDY OF ANTHRACITE, BY COUNTIES #

YEAR	CARBON	COLUMBIA	DAUPHIN	LACKAWANNA	LUZERNE	NORTHUMB.	SCHUYLKILL	SULLIVAN	SUSQUE.	WAYNE	DIVISION
1924	2,654,820	1,044,724	1,113,048	20,392,400	34,711,150	7,207,553	19,238,222	214,773	655,000	45,759	87,277,449
1930	1,754,134	685,253	867,363	15,312,853	27,456,102	6,749,282	15,673,224	64,071	91,296	122,981	68,776,559
1931	1,886,084	865,424	756,274	12,768,631	23,766,625	5,728,763	12,925,765	75,512	184,773	157,506	59,115,387
1932	1,821,911	497,966	673,078	11,729,255	19,327,982	4,679,188	10,479,627	70,794	97,514	124,196	49,501,511
1933	1,610,409	556,539	652,057	11,090,350	19,861,441	5,072,019	10,252,019	126,101	130,715	125,242	49,507,577
1934	2,057,670	917,520	631,835	12,440,808	21,438,372	5,767,112	12,911,938	189,070	179,236	265,390	56,798,951
1935	1,703,018	824,803	549,467	10,437,254	21,059,166	5,469,278	10,761,971	179,134	216,010	159,010	51,359,111
1936	1,873,797	1,546,144	400,758	11,154,691	21,315,049	5,208,201	12,333,446	213,817	19,169	198,914	54,264,016
1937	2,076,398	1,251,044	484,403	9,117,509	22,487,109	4,604,212	11,461,545	99,879	15,339	102,858	51,700,296
1938	1,947,771	1,157,913	425,871	8,439,828	20,365,737	4,090,787	9,774,216	49,383	7,030	10,975	46,269,511
1939	2,514,152	964,346	476,960	9,198,552	23,377,666	4,815,235	9,885,719	36,684	124,791	5,602	51,399,707
1940	2,175,348	1,026,366	505,558	9,259,463	22,672,016	4,499,464	11,242,175	86,444	86,149	9,071	51,526,454
1941	2,401,741	1,067,473	345,545	8,973,827	24,316,481	4,934,077	11,822,153	49,179	21,686	10,015	53,942,177
1942	2,796,798	998,124	57,479	9,344,388	25,767,343	5,295,913	13,520,462	49,113	62,761	47,248	57,939,629
1943	3,150,839	861,015	229,826	9,449,647	24,082,663	5,463,150	17,396,092	101,977	73,307	3,484	60,511,730
1944	3,644,877	1,147,941	299,349	9,427,467	24,810,042	5,713,444	18,834,594	117,756	46,216	10,903	64,112,589
1945	3,345,258	1,121,228	292,662	8,083,021	21,073,255	5,001,063	16,731,289	187,007	66,452	*	55,901,235
1946	3,166,205	1,457,754	141,800	9,058,331	22,770,658	6,342,793	18,811,399	105,862	123,908	*	61,978,710
1947	2,933,809	1,507,884	28,731	8,538,164	21,990,960	6,779,549	16,259,688	46,785	142,115	*	58,227,985
1948	2,801,893	1,679,495	10,254	8,610,881	21,591,846	6,937,340	17,275,544	63,230	138,327	*	59,108,810
1949	2,126,682	1,380,732	61,389	6,221,743	15,989,846	5,200,490	13,538,194	23,585	167,457	*	44,710,118
1950	1,988,317	1,281,807	52,275	6,526,466	17,112,757	5,211,307	14,066,493	26,690	73,143	*	46,339,255
1951	1,894,035	985,177	30,133	5,775,808	14,882,432	5,749,967	13,021,079	28,762	21,662	*	42,389,055
1952	1,899,297	760,695	868	5,303,545	13,774,952	5,326,146	12,977,572	24,055	-	*	40,067,130
1953	1,561,836	745,649	21,811	3,555,642	10,201,927	4,247,561	10,142,880	18,085	-	*	30,495,391
1954	1,272,419	568,733	52,281	2,903,470	10,675,181	3,283,315	7,836,675	20,238	-	*	26,612,312
1955 #	1,749,692	639,990	212,239	2,594,928	9,921,275	2,749,383	8,057,660	9,625	-	*	25,934,792
1956	1,746,287	811,201	251,495	3,232,566	9,762,753	3,524,853	8,801,402	5,715	6,361	*	28,175,633
1957	1,107,042	850,479	195,499	2,680,409	8,389,265	3,165,414	8,518,317	6,841	-	*	25,163,466
1958	623,195	888,009	123,861	2,094,170	6,774,033	2,600,831	7,307,839	15,174	1,680	*	20,456,475
1959	518,252	692,224	142,720	2,447,827	6,172,748	2,551,604	7,432,081	8,052	-	*	19,670,615
1960	519,583	474,234	129,002	1,853,008	5,380,696	2,444,599	6,933,916	13,828	679	*	17,721,113
1961	579,106	464,421	108,542	1,194,971	5,307,953	2,004,278	6,827,844	16,534	1,645	*	16,506,612
1962	497,925	411,185	110,384	1,079,459	6,090,572	1,702,891	6,583,012	10,786	9,512	*	16,496,315
1963	727,445	445,749	230,324	964,475	6,412,375	2,082,968	6,531,130	8,729	8,007	*	17,411,202
1964	551,442	910,704	237,555	879,898	5,649,906	2,267,073	6,011,519	15,081	1,499	*	16,524,877
1965	444,826	416,272	196,495	660,558	5,346,676	1,600,886	5,538,420	23,096	2,395	193	14,229,817
1966	507,724	299,622	167,568	501,187	4,478,217	1,431,444	4,624,032	20,474	1,337	-	12,031,375
1967	545,089	507,236	162,213	431,073	4,192,283	1,447,420	4,261,992	34,766	369	-	11,552,441
1968	533,757	309,860	122,743	558,459	3,476,055	1,680,202	4,297,648	37,159	9,589	-	11,025,482
1969	497,159	327,999	52,613	441,475	3,360,976	1,309,666	4,133,984	40,808	1,125	-	10,165,805

Total production (net tons)

\* Included in total production.  
 # No accurate record previous to 1870.  
 \$ No accurate record previous to 1891.  
 \*\* In 1955 and subsequent years the production, employees, fatalities, etc., of deep mines employing fewer than five (5) persons inside are included in this report.



FORTY-ONE YEAR STUDY OF ANTHRACITE, BY COUNTIES #

	CARBON	COLUMBIA	DAUPHIN	LACKAWANNA	LUZERNE	NORTHUMB.	SCHUYLKILL	SULLIVAN	SUSQUE.	WAYNE	DIVISION
1924	278	225	277	276	270	273	271	121	298	295	271
1930	175	147	184	212	213	265	196	66	115	159	210
1931	176	178	198	185	175	185	185	66	183	198	180
1932	139	161	167	169	154	181	164	96	57	106	160
1933	134	156	191	209	170	211	167	75	192	127	179
1934	174	218	221	235	192	240	195	174	269	270	206
1935	147	135	193	206	181	222	181	143	217	198	187
1936	142	215	159	224	181	213	188	208	171	181	193
1937	169	202	201	186	190	186	180	123	86	141	186
1938	166	191	192	178	168	176	168 a	103	85	163	171
1939	175	164	205	180	190	194	175 b	100	186	144	185
1940	180	194	204	195	183	180	191 c	132	142	142	187
1941	190	184	221	205	196	217	196 d	188	154	159	199
1942	230	235	39	241	259	236	234 e	210	212	219	246
1943	267	267	287	273	277	259	258 f	239	234	*	269
1944	293	292	312	300	304	262	274 g	282	*	*	292
1945	265	267	261	270	274	258	250 h	260	174	*	265
1946	262	234	74	275	278	257	251	217	272	*	266
1947	269	270	139	272	283	269	277	183	255	-	277
1948	272	163	199	279	281	265	250 i	202	188	-	268
1949	197	291	115	224	188	234	216 j	123	260	-	207
1950	220	280	195	235	205	280	250 k	140	280	-	220
1951	193	227	180	250	222	240	241 m	192	250	-	233
1952	213	222	224	240	238	210	215 n	206	-	-	211
1953	168	163	140	164	187	178	177 o	146	-	-	179
1954	148	172	210	119	179	232	178	55	-	-	172
1955 #	172	136	156	171	209	119	175 p	97	-	-	179
1956	198	183	216	223	210	210	205 q	306	-	68	209
1957	141	186	206	192	190	207	189	260	-	-	189
1958	175	171	196	161	188	185	185 s	171	200	201	182
1959	144	167	186	186	163	187	175 t	134	-	134	172
1960	102	133	160	181	212	173	166 u	214	85	90	180
1961	227	166	160	202	222	242	192 v	261	121	116	196
1962	235	168	148	197	219	185	203 w	166	184	41	204
1963	264	152	204	209	237	217	200 x	133	-	184	216
1964	204	190	200	214	233	210	208 y	85	-	62	216
1965	187	188	171	168	223	180	196 z	158	220	120	191
1966	186	237	188	118	213	178	190 aa	148	81	10	190
1967	202	268	191	204	224	224	211 bb	250	37	-	218
1968	265	146	205	240	220	226	225	251	78	-	224
1969	216	283	195	207	218	190	214	186	16	-	213

Average days worked

FORTY-ONE YEAR STUDY OF ANTHRACITE, BY COUNTIES #

	CARBON	COLUMBIA	DAUPHIN	LACKAWANNA	LUZERNE	NORTHUMB.	SCHUYLKILL	SULLIVAN	SUSQUE.	WAYNE	DIVISION
1924	11	11	7	125	193	38	110	-	1	-	496
1930	11	-	5	108	164	29	123	-	1	3	444
1931	6	4	4	116	151	32	67	1	-	3	384
1932	3	1	8	59	116	13	42	-	-	1	243
1933	3	-	1	59	110	14	43	2	-	-	232
1934	7	4	2	59	114	24	47	1	2	-	260
1935	4	3	7	50	123	16	61	3	-	-	267
1936	4	-	2	50	137	14	34	-	-	-	241
1937	5	6	9	35	102	15	38	1	-	1	212
1938	6	4	5	49	102	13	44	-	-	-	223
1939	7	5	3	46	108	13	27	-	1	-	210
1940	6	2	3	35	93	10	33	-	-	-	182
1941	8	2	2	37	98	7	35	-	-	-	189
1942	4	6	-	35	128	16	36	-	-	-	225
1943	7	5	-	36	103	13	54	-	-	-	218
1944	12	4	1	37	70	15	32	-	-	-	171
1945	6	6	-	27	53	13	32	1	-	-	138
1946	6	6	-	27	79	12	38	1	-	-	169
1947	4	5	-	25	104	13	15	-	-	-	166
1948	5	3	-	19	65	5	34	-	-	-	131
1949	3	1	-	8	60	2	18	-	-	-	92
1950	4	2	-	8	52	9	11	-	-	-	86
1951	4	3	-	13	44	8	22	-	-	-	94
1952	5	5	-	10	37	10	22	-	-	-	92
1953	3	1	-	7	30	3	15	-	-	-	59
1954	1	2	-	7	27	2	8	-	-	-	47
1955 #	5	-	-	5	32	6	12	-	-	-	60
1956	4	-	-	7	23	6	14	-	-	-	54
1957	3	-	1	7	20	6	10	-	-	-	51
1958	-	1	-	2	15	4	9	-	-	-	31
1959	1	2	-	6	24	4	9	-	-	-	46
1960	1	1	-	11	14	3	5	-	-	-	35
1961	1	-	-	1	10	3	4	-	-	-	19
1962	-	-	-	-	11	1	14	-	-	-	26
1963	1	1	-	3	12	4	9	-	-	-	30
1964	-	-	-	1	7	8	8	-	-	-	24
1965	-	2	1	-	2	1	2	-	-	-	8
1966	-	-	-	-	2	-	3	-	-	-	5
1967	-	-	-	-	4	2	3	-	-	-	9
1968	-	-	-	2	2	-	-	-	-	-	4
1969	-	-	-	-	4	1	8	-	-	-	13

Fatalities



EXPLANATION OF SYMBOLS USED IN THIS REPORT

a -	Includes	6,184 tons	13 employees,	124 days	and 1,612 man-days	for Lebanon County
b -	"	13,927	" 5	"	990	"
c -	"	17,330	" 12	"	1,773	"
d -	"	30,716	" 26	"	1,856	"
e -	"	35,611	" 39	"	4,593	"
f -	"	21,981	" 22	"	3,624	"
g -	"	21,550	" 14	"	2,940	"
h -	"	37,690	" 41	"	9,881	"
i -	"	21,982	" 6	"	1,338	"
j -	"	21,763	" 7	"	1,582	"
k -	"	22,976	" 3	"	1,335	"
l -	"	26,567	" 13	"	2,020	"
m -	"	24,767	" 11	"	2,156	"
n -	"	6,560	" 10	"	460	"
o -	"	3,752	" 20	"	2,480	"
p -	"	3,359	" 22	"	3,358	"
q -	"	3,350	" 5	"	940	"
r -	"	9,106	" 6	"	588	"
s -	"	4,450	" 6	"	910	"
t -	"	2,770	" 3	"	690	"
u -	"	13,654	" 5	"	72	"
v -	"	13,101	" 7	"	821	"
w -	"	26,192	" 15	"	2,893	"
x -	"	33,019	" 14	"	1,737	"
y -	"	13,000	" 10	"	1,630	"
z -	"	39,237	" 9	"	631	"
aa -	"	2,700	" 5	"	90	"
bb -	"	"	"	"	"	"

NOTE: The year 1924 was selected as a normal year, in order that comparison might be made with the depression years that are a part of this report.

\* Not segregated from Lackawanna County.

# In 1955, and subsequent years, the production, employees, fatalities, etc., of deep mines employing fewer than five (5) persons inside are included in the County totals.

ANTHRACITE DIVISION  
PRODUCTION OF COAL, EMPLOYEES AND FATALS BY COUNTY  
1969

County	Mines Employing Five Or More Persons			Mines Employing Fewer Than Five Persons		Percentage of Total Production	Employees By County				Total Em- ploy- es	Total Fatal- ities	
	Deep Mined Production	Strip Mined Production	Bank Mined Production	Deep Mined Production	Total Production		Large Deep	Small Deep	Strip	Bank			Washery and Breaker
Carbon	21,190	262,613	207,856	5,500	497,159	4.89%	17	6	168	71	21	283	-
Columbia	24,840	289,934	860	12,365	327,999	3.23%	20	19	113	2	-	154	-
Dauphin	-	-	34,379	18,234	52,613	0.52%	-	32	-	7	41	80	-
Lackawanna	-	253,172	187,963	340	441,475	4.34%	-	3	229	40	138	410	-
Lebanon	-	-	-	-	-	-	-	-	-	-	-	-	-
Luzerne	812,068	1,572,405	976,503	-	3,360,976	33.06%	789	-	530	261	497	2,077	4
Northumberland	230,718	340,174	672,119	66,655	1,309,666	12.88%	183	94	221	88	220	806	1
Schuylkill	785,710	1,937,799	1,237,431	173,044	4,133,984	40.67%	551	261	808	236	761	2,617	8
Sullivan	-	40,026	782	-	40,808	0.40%	-	-	14	1	11	26	-
Susquehanna	-	-	1,125	-	1,125	0.01%	-	-	-	8	-	8	-
Wayne	-	-	-	-	-	-	-	-	-	-	-	-	-
Division Total	1,874,526	4,696,123	3,319,018	276,138	10,165,805	100.00%	1,560	415	2,083	714	1,689	6,461	13
Percentage of Total Production	18.44%	46.19%	32.65%	2.72%	100.00%								



ANTHRACITE PRODUCTION (DEEP MINED, STRIPPING AND BANK), FATALITIES, PRODUCTION PER FATAL AND EMPLOYEES  
BY DISTRICT  
1969

Dis- trict	Inspector	Deep Mined	Stripping	Bank	Total Production	Fatal- ities Deep	Fatal- ities Strip	Fatal- ities Bank	Total Fatal- ities	Production Per Fatal	Total Employes
1	T. M. Beaney	-	919,681	-	919,681	-	2	-	2	459,840	516
2	A. J. Latz	-	1,593,607	-	1,593,607	-	1	-	1	1,593,607	673
3	J. R. Ruane	-	1,083,685	-	1,083,685	-	-	-	-	-	512
4	Walter Davis	-	1,099,150	-	1,099,150	-	-	-	-	-	389
5	W. A. Sanders	13,865	-	439,072	452,937	-	-	-	-	-	502
6	A. A. Joyce	781,447	-	356,518	1,137,965	1	-	-	1	1,137,965	900
7	P. P. Hino	26,760	-	1,107,716	1,134,476	-	-	1	1	1,134,476	702
8	Leonard Rogers	75,834	-	335,911	411,745	1	-	-	1	411,745	259
9	G. P. Gallagher	44,972	-	289,788	334,760	-	-	-	-	-	125
10	Leon Brass	142,848	-	34,203	177,051	1	-	-	1	177,051	198
11	C. E. Kashner	112,504	-	64,022	176,526	-	-	-	-	-	188
12	J. J. Shober, Jr.	82,984	-	428,022	511,006	-	-	1	1	511,006	506
13	Joseph Halaburda	122,689	-	126,950	249,639	-	-	-	-	-	238
14	W. D. Maurer	134,700	-	7,579	142,279	1	-	-	1	142,279	155
15	A. E. Hand	337,668	-	91,287	428,955	1	-	-	1	428,955	297
16	C. E. Miller	274,393	-	37,950	312,343	3	-	-	3	104,114	301
Division Total		2,150,664	4,696,123	3,319,018	10,165,805	8	3	2	13	781,985	6,461

SUMMARY OF ANTHRACITE MINES, PRODUCTION AND FATALITIES BY DISTRICT  
1969

Dis- trict	Inspector	Total Number of Operators	No. of Large Deep Mines	No. of Small Deep Mines*	No. of Strip of of Oper- ations	Total Number of Oper- ations	No. of Gaseous Mines	No. of Non- Gaseous Mines	No. of Deep Strip Em- ployes*	No. of Strip Em- ployes	No. of Bank Em- ployes	Washery & Breaker Em- ployes	Total Em- ployes	Total No. of Deep Mined Production*	Strip Mined Production	Bank Mined Production	Total Production	Fa- tals	Pro- duction Per Fatal
1	T. M. Beaney	11	-	-	41	41	-	-	509	-	7	516	-	919,681	-	-	919,681	2	459,840
2	A. J. Latz	9	-	-	35	35	-	-	673	-	-	673	-	1,593,607	-	-	1,593,607	1	1,593,607
3	J. R. Ruane	21	-	-	60	60	-	-	512	-	-	512	-	1,083,685	-	-	1,083,685	-	-
4	Walter Davis	26	-	-	38	38	-	-	389	-	-	389	-	1,099,150	-	-	1,099,150	-	-
5	W. A. Sanders	29	4	2	22	26	3	1	15	-	224	263	502	13,865	-	439,072	452,937	-	-
6	A. A. Joyce	7	4	-	5	9	4	-	765	-	31	104	900	781,447	-	356,518	1,137,965	1	1,137,965
7	P. P. Hino	32	10	8	32	42	2	8	36	-	198	468	702	26,760	-	1,107,716	1,134,476	1	1,134,476
8	Leonard Rogers	28	19	15	8	27	6	13	81	-	47	131	259	75,834	-	335,911	411,745	1	411,745
9	G. P. Gallagher	21	13	8	9	22	6	7	69	-	38	18	125	44,972	-	289,788	334,760	-	-
10	Leon Brass	28	24	12	2	26	6	18	117	-	10	71	198	142,848	-	34,203	177,051	1	177,051
11	C. E. Kashner	30	17	7	2	19	7	10	95	-	5	88	188	112,504	-	64,022	176,526	-	-
12	J. J. Shober, Jr.	39	22	14	-	36	5	17	111	-	113	202	506	82,984	-	428,022	511,006	1	511,006
13	Joseph Halaburda	41	29	15	-	36	6	23	137	-	25	76	238	122,689	-	126,950	249,639	-	-
14	W. D. Maurer	23	20	13	-	24	2	18	107	-	8	40	155	134,700	-	7,579	142,279	1	142,279
15	A. E. Hand	33	32	13	-	35	12	20	216	-	6	75	297	337,668	-	91,287	428,955	1	428,955
16	C. E. Miller	43	40	29	-	43	12	28	226	-	9	66	301	274,393	-	37,950	312,343	3	104,114
Division Total		421#	234	136	174#	109	517	71	1,975	2,083	714	1,689	6,461	2,150,664	4,696,123	3,319,018	10,165,805	13	781,985

\* 136 Small Deep Mines are included in the total number of Deep Mines; 415 Small Deep Employees are included in Deep Employees; 276,138 Small Deep Production is included in Deep Mined Production.  
# Due to some companies operating in more than one district, the actual total number of Anthracite Operators is 355, including 63 companies operating strip mines.

Production, How Shipped, Average Days Worked, Employees, Explosives  
Fatal and Non-fatal Accidents

By Inspection District - 1969

Dis- trict	Production - Net Tons				Total production	Pounds permiss- ible ex- plosives used	Pounds dynamite used	Days worked	Empl- oyes	Fatal acci- dents	Non- fatal acci- dents
	Shipped to Market By railroad	Shipped to Market By truck	Sold to local trade	Used at colliery for steam and heat							
1	297,358	241,649	378,961	1,713	919,681	6,228,727	1,004,477	243	516	2	11
2	872,410	512,113	203,101	5,983	1,593,607	-	11,922,463	211	673	1	33
3	414,232	552,762	115,158	1,533	1,083,685	7,977,910	550	213	512	-	28
4	529,526	274,444	293,972	1,208	1,099,150	11,841,287	2,125	238	389	-	23
5	163,365	223,863	63,970	1,739	452,937	7,590	250	191	502	-	16
6	289,229	659,632	188,517	557	1,137,965	773,750	28,950	233	900	1	126
7	824,074	179,653	128,894	1,855	1,134,476	10,475	400	181	702	1	38
8	42,577	316,493	52,588	87	411,745	11,635	12,700	183	259	1	43
9	63,438	236,039	34,752	531	334,760	31,620	-	200	125	-	1
10	29,915	104,086	43,044	6	177,051	90,650	675	211	198	1	22
11	53,225	100,126	23,175	-	176,526	57,015	-	234	188	-	6
12	208,872	197,208	104,674	252	511,006	52,130	4,200	169	506	1	24
13	61,832	135,478	51,019	1,310	249,639	116,943	16,875	218	238	-	13
14	30,988	78,718	31,998	575	142,279	115,860	1,200	239	155	1	19
15	120,144	221,304	85,518	1,989	428,955	249,125	-	245	297	1	9
16	57,252	160,202	93,754	1,135	312,343	166,631	12,375	226	301	3	23
Total	4,058,437	4,193,770	1,893,125	20,473	10,165,805	27,734,348	13,007,240	213	6,461	13	435

ANTHRACITE DIVISION  
SMALL MINE REPORT - 1969\*

Dis- trict	Number of Small Mine Operators	Number of Small Mines	Number of Men Employed in Small Mines	Small Mine Production	Fatal Acci- dents	Non- fatal Acci- dents	Number of Man- Days
1	-	-	-	-	-	-	-
2	-	-	-	-	-	-	-
3	-	-	-	-	-	-	-
4	-	-	-	-	-	-	-
5	2	2	3	310	-	-	261
6	-	-	-	-	-	-	-
7	8	8	17	8,258	-	-	3,478
8	15	15	42	19,109	-	-	4,865
9	8	8	24	14,656	-	1	4,798
10	12	12	35	34,730	-	-	7,407
11	7	7	26	15,120	-	-	4,626
12	14	14	45	21,096	-	-	10,991
13	15	15	47	22,054	-	1	6,570
14	13	13	38	29,881	-	1	6,378
15	13	13	46	45,157	-	-	12,120
16	29	29	92	64,837	1	2	14,582
Total	136	136	415	276,138	1	5	76,079

\* All figures included in report of Summary of Anthracite Mines, Production and Realities  
By District.

ANTHRACITE DIVISION

District	Mechanical Loading			Number of Tons Produced by Mechanical Loading	Number of Employees engaged in this class of work	Electric Motors		Pumps Delivering Water to Surface	
	Number of Scrapers, Conveyors or Shaker Chutes	Number of Under-cutting or Mining Machines	Number of Loading Machines			Total Number	Horse-power	Total Number	Number of Gallons delivered per day of 24 hours
1	-	-	-	-	-	12	696	2	14,400,000
2	-	-	-	-	-	-	-	-	-
3	-	-	-	-	-	-	-	-	-
4	-	-	-	-	-	3	1,750	3	7,261,084
5	15	-	-	13,865	17	713	25,578	1	720,000
6	150	1	7	781,447	338	377	17,759	12	16,054,967
7	5	-	-	23,151	17	822	25,439	8	13,901,970
8	1	-	-	336,982	51	169	5,433	9	4,575,500
9	4	-	11	293,107	41	75	2,486	1	720,000
10	12	-	3	98,942	39	252	4,438	18	206,900
11	10	-	-	42,572	22	301	4,673	21	2,247,833
12	6	-	2	25,361	17	723	19,507	13	106,200
13	20	-	1	52,365	32	269	3,718	13	327,150
14	17	-	1	79,352	34	163	2,951	14	1,056,300
15	17	-	15	179,924	27	292	8,230	47	1,832,150
16	5	-	9	75,220	24	301	6,522	33	1,311,750
Total	262	1	58	2,002,288	669	4,472	129,180	195	64,721,804

SUMMARY OF EMPLOYEES BY DISTRICT  
ANTHRACITE DIVISION--1969

District	INSIDE EMPLOYEES					OUTSIDE EMPLOYEES					GRAND TOTAL Inside & Outside
	Mine Foreman	Miners	Miners Laborers	All Other	Total Inside	Super-intendents	Office	Breaker	All Other	Total Outside	
1	-	-	-	-	-	24	6	9	477	516	516
2	-	-	-	-	-	44	20	-	609	673	673
3	-	-	-	-	-	29	1	-	482	512	512
4	-	-	-	-	-	39	3	-	347	389	389
5	3	7	7	-	17	26	8	263	188	485	502
6	33	182	234	173	622	9	6	104	159	278	900
7	12	13	4	-	29	11	1	468	193	673	702
8	20	33	6	5	64	5	1	130	59	195	259
9	15	30	7	-	52	8	3	18	44	73	125
10	26	49	11	4	90	9	2	71	26	108	198
11	18	46	10	-	74	-	-	88	26	114	188
12	22	56	4	4	86	12	7	282	119	420	506
13	35	59	7	-	101	11	1	76	49	137	238
14	21	34	16	7	78	1	-	40	36	77	155
15	36	106	1	34	177	3	-	75	42	120	297
16	56	84	30	2	172	9	1	66	53	129	301
Total	297	699	337	229	1,562	240	60	1,690	2,909	4,899	6,461

ANTHRACITE DIVISION  
 OPERATORS PRODUCING 50,000 OR MORE TONS  
 1969

District	Operator	Production
3-4-7-	Reading Anthracite Co.	1,123,227
11-12-13	Lehigh Valley Anthracite, Inc.	938,529
1-2-3-5-	Jeddo-Highland Coal Co.	862,092
7-12-15	Blue Coal Corporation	767,012
2-7	Greenwood Stripping Corporation	563,113
1-5-6	Glen-Nan Coal Co., Inc.	532,920
2	Gangloff Brothers	451,179
6	Ken Follock, Inc.	311,438
8-9-16	B-D Mining Co.	261,338
7	Kerrits & Helfrich, Inc.	209,452
12-15	Manbeck Dredging Co., Inc.	192,238
2-7	George Husz	182,145
4-15-16	Kocher Coal Co., Inc., Leon E.	168,795
1	Northwest Mining Co., Inc.	138,082
4-13	Schuyldell Contracting Co.	122,933
8-9-10	State Coal Co., Inc.	110,420
5	C. B. M. Coal Co.	89,825
5	Olyphant Premium Anthracite, Inc.	80,123
12	William Schickelram Co.	74,674
1	Carbondale Coal Co.	74,027
5	Popple Coal Sales, Inc., Raymond	73,054
12	Mar Strip & Construction Co.	71,156
3-7-8	Gapparelli Stripping & Construction Co.	69,819
11-15	Bush Coal Co.	62,705
2-7	Honeybrook Mines, Inc.	60,878
7	Coleley Coal Co., Inc.	60,568
3	Rosini Coal Co.	59,259
2	Gowen Coal Co.	51,383

PRODUCTION AND ACCIDENT RECORD  
 FOR OPERATORS HAVING A FATALITY  
 1969

Operator	Deep Mined	Stripping	Bank	Total Production	Fatal Accidents			Total	Nonfatal Accidents	Production Per Fatal	Employees
					Deep	Strip	Bank				
Lehigh Valley Anthracite, Inc.	-	599,122	339,407	938,529	-	1	-	1	34	938,529	516
Jeddo-Highland Coal Co.	-	721,623	140,469	862,092	-	-	1	1	14	862,092	252
Blue Coal Corporation	231,803	507,585	27,624	767,012	-	-	1	1	63	767,012	768
Greenwood Stripping Corp.	-	562,893	-	562,893	-	1	-	1	22	562,893	305
Glen-Nan Coal Co., Inc.	532,920	-	-	532,920	1	-	-	1	70	532,920	369
Bush Coal Co.	62,705	-	-	62,705	1	-	-	1	-	62,705	31
Hatter Coal Co.	49,817	-	-	49,817	1	-	-	1	1	49,817	22
Marion Mining Co., Inc.	33,365	-	-	33,365	1	-	-	1	-	33,365	23
H. & S. Coal Co.	30,008	-	-	30,008	1	-	-	1	7	30,008	25
Harner Coal Co.	15,181	-	-	15,181	1	-	-	1	-	15,181	8
Ginther Coal Co.	-	-	28,357	28,357	-	-	1	1	-	28,357	6
S.B.K. Coal Co.	4,375	-	-	4,375	1	-	-	1	-	4,375	4
Hornberger Coal Co.	974	-	-	974	1	-	-	1	-	974	3
Total Production for Operators with a fatality	961,118	2,391,223	535,857	3,888,228	8	3	2	13	211	299,094	2,362
Total Production for Operators without a fatality	1,189,516	2,304,900	2,783,161	6,277,577	-	-	-	-	224	-	4,099
Division Total	2,150,664	4,696,123	3,319,018	10,165,805	8	3	2	13	435	781,985	6,461

CAUSES OF ANTHRACITE FATAL ACCIDENTS, BY COUNTY -- 1969

	Carbon	Columbia	Dauphin	Lackawanna	Lebanon	Luzerne	Northumberland	Schuylkill	Sullivan	Susquehanna	Wayne	Total	Percentage of Total accidents
<u>INSIDE</u>													
Falls of Roof, Face or Sides	-	-	-	-	-	-	-	1	-	-	-	1	7.69%
Methane Gas	-	-	-	-	-	1	-	1	-	-	-	2	15.39%
Rush of Material	-	-	-	-	-	-	-	1	-	-	-	1	7.69%
Fall of Person	-	-	-	-	-	-	-	2	-	-	-	2	15.39%
Transportation	-	-	-	-	-	-	1	1	-	-	-	2	15.39%
Total Inside	-	-	-	-	-	1	1	6	-	-	-	8	61.55%
<u>OUTSIDE</u>													
Transportation	-	-	-	-	-	1	-	1	-	-	-	2	15.39%
Stripping	-	-	-	-	-	2	-	1	-	-	-	3	23.06%
Total Outside	-	-	-	-	-	3	-	2	-	-	-	5	38.45%
GRAND TOTAL	-	-	-	-	-	4	1	8	-	-	-	13	100.00%
Percentage of total Accidents	-	-	-	-	-	30.77%	7.69%	61.54%	-	-	-	100.00%	

ANTHRACITE FATAL ACCIDENT VICTIMS -- 1969

Dis- trict	Name of Victim	Victim's Address	Company	Mine	Date of Accident	Cause of Accident
6	John Knaus	Wilkes-Barre	Glen-Nan Coal Co., Inc.	No. 3 Slope	Jan. 20	Methane Gas
8	Walter Balsavage	Girardville	Marion Mining Co., Inc.	Connerton Drift	Feb. 3	Fall of Person(Inside)
16	Kenneth P. Klinger	Hegins	Hatter Coal Co.	Middle Split Slope	Feb. 10	Fall of Person(Inside)
10	Henry Heiser	Mount Carmel	H. & S. Coal Co.	Water Level Drift	Mar. 27	Transportation(Inside)
16	Theodore A. Miller	Schuylkill Haven R.D.	Hornberger Coal Co.	Buck Mountain Slope	Apr. 28	Rush of Material
1	Louis Gonzalez	Wilkes-Barre	Lehigh Valley Anthracite, Inc.	Baltimore Strip	May 15	Stripping (Burns)
2	Peter Lohenitz	Tamaqua	Greenwood Stripping Corp.	Mammoth Strip No.33-1	June 9	Stripping (Truck)
16	Marvin L. Shadle	Hegins	Harner Coal Co., Inc.	Skidmore Slope	July 23	Methane Gas
15	Albert Bush	Tower City	Bush Coal Co.	Top Split Slope	July 25	Transportation(Inside)
7	John Smith	Hazleton	Jeddo-Highland Coal Co.	Jeddo No. 7 Breaker	Aug. 19	Transportation(Outside)
14	Mark Shade	Hegins	S. B. K. Coal Co.	Buck Mountain Slope	Aug. 29	Fall of Roof
1	Joseph Sikora	Hunlock Creek	Elus Coal Corporation			
12	William Kapes	Hazleton	(Kingston Excavating Co.,Cont.) Ginther Coal Co.	Wanamie Main St.Strip Lucanna Fine Coal Pl.	Oct. 21 Oct. 23	Stripping(Machinery) Transportation(Outside)

ACCIDENTS IN WHICH FIVE OR MORE PERSONS WERE KILLED, 1847 - 1969

Year	Date	Colliery	Company	Location of Colliery	Cause of Accident	Number Killed
1847	Feb.	Spencer	Spencer Coal Co.	Pottsville	Explosion of gas	7
1869	Sep. 6	Avondale	Delaware, Lackawanna & Western Railroad Co.	Plymouth	Mine fire	110
1870	Mar. 22	Potts	Locust Dale Coal Co.	Locust Dale	Boiler explosion	5
	Aug. 10	Heins & Glassmire	Heins & Glassmire	Middleport	Cage fell down shaft	9
	Aug. 29	Preston # 3	Preston Coal & Improvement Co.	Girardville	Car fell down slope	7
1871	May 27	West Pittston	Lehigh Valley Railroad Co.	West Pittston	Suffocated by smoke from burning breaker	20
	Oct. 2	Otto Red Ash	Cain, Hacker & Cook	Branch Dale	Explosion of gas	5
1873	June 10	Henry Clay	Langdon & Co., R.	Shamokin	Explosion of gas	10
1877	May 9	Wadesville	Wadesville Shaft Colliery	Wadesville	Explosion of gas	7
1878	Jan. 15	Potts	Philadelphia & Reading Coal & Iron Co.	Locust Dale	Explosion of gas	5
1879	May 6	Audenried	Lehigh & Wilkes-Barre Coal Co.	Audenried	Explosion of gas	6
	Nov. 2	Mill Creek	D. & H. Canal Co.	Mill Creek	Explosion of gas	5
1880	May 3	Lykens Valley	Short Mountain & Lehigh Valley Coal Co.	Shamokin	Explosion of gas	5
1882	May 24	Kohinoor	Heckscher & Co., R.	Shenandoah	Explosion of gas	5
1884	Aug. 21	Buck Ridge	Philadelphia & Reading Coal & Iron Co.	Shamokin	Mine fire	7
1885	Apr. 6	Cuyler	Heaton & Co., S. M.	Raven Run	Fall of roof	10
	Apr. 11	West End	West End Coal Co.	Mocanaqua	Suffocated by gas from boiler fire	10
	Oct. 21	Plymouth No. 2	D. & H. Coal Co.	Plymouth	Explosion of gas	6
	Dec. 18	Nanticoke No. 1	Susquehanna Coal Co.	Nanticoke	Inrush of quicksand	26
1886	Aug. 30	Fair Lawn	Fair Lawn Coal Co.	Scranton	Explosion of gas	6
	Sep. 13	Marvine	D. & H. Coal Co.	Scranton	Suffocated by gas	8
	Nov. 26	Conyngham	D. & H. Coal Co.	Wilkes-Barre	Explosion of gas	12
1887	Apr. 27	Tunnel	Philadelphia & Reading Coal & Iron Co.	Ashland	Suffocated by gas	5
	Oct. 1	Bast	Philadelphia & Reading Coal & Iron Co.	Big Mine Run	Explosion of gas	5
1889	May 9	Kaska, William	L. C. & N. Co.	Middleport	Car fell on cage in shaft	10
1890	Feb. 1	Nottingham	Lehigh & Wilkes-Barre Coal Co.	Plymouth	Explosion of gas	8
	Mar. 3	S. Wilkes-Barre No. 3	Lehigh & Wilkes-Barre Coal Co.	Wilkes-Barre	Explosion of gas	5
	Apr. 2	Susquehanna No. 4	Susquehanna Coal Co.	Nanticoke	Explosion of gas	5
	May 15	Jersey No. 8	Lehigh & Wilkes-Barre Coal Co.	Ashley	Explosion of gas	26
1891	Feb. 4	Spring Mountain No. 1	Spring Mountain Coal Co.	Jeanesville	Drowned-water from old workings	13
	Oct. 23	Richardson	Philadelphia & Reading Coal & Iron Co.	Glen Carbon	Suffocated by gas	7
	Nov. 8	Susquehanna No. 1	Susquehanna Coal Co.	Nanticoke	Explosion of gas	12
1892	Apr. 20	Lytle	Lytle Coal Co.	Minersville	Drowned-water from old workings	10
	July 23	York Farm	Lehigh Valley Coal Co.	Pottsville	Explosion of gas	15

ACCIDENTS IN WHICH FIVE OR MORE PERSONS WERE KILLED, 1847 - 1969

Year	Date	Colliery	Company	Location of Colliery	Cause of Accident	Number Killed
1893	Apr. 1	Neilson	Langdon & Co., Inc., A. L.	Shamokin	Mine fire	10
	July 22	Susquehanna No. 1	Susquehanna Coal Co.	Nanticoke	Explosion of gas	5
	Sep. 21	Lance No. 11	Lehigh & Wilkes-Barre Coal Co.	Plymouth	Explosion of gas	6
1894	Feb. 13	Gaylord	Kingston Coal Co.	Plymouth	Fall of roof	13
	July 17	East Sugar Loaf	Linderman & Skeer	Stockton	Explosion of powder & dynamite	8
	Oct. 8	Luke Fidler	Mineral Railroad & Mining Co.	Shamokin	Mine fire	5
	Oct. 11	Henry Clay	Philadelphia & Reading Coal & Iron Co.	Shamokin	Boiler explosion	6
1895	Feb. 18	West Bear Ridge	Philadelphia & Reading Coal & Iron Co.	Mahanoy Plane	Explosion of gas	5
	Oct. 7	Dorrance	Lehigh Valley Coal Co.	Wilkes-Barre	Explosion of gas	7
1896	June 28	Twin	Newton Coal Co.	Pittston	Fall of roof	58
	Oct. 29	S. Wilkes-Barre No. 3	Lehigh & Wilkes-Barre Coal Co.	Wilkes-Barre	Explosion of gas	6
1897	Jan. 13	Wadesville	Philadelphia & Reading Coal & Iron Co.	Wadesville	Crosshead fell down shaft	5
	Sep. 28	Jermyn No. 1	Jermyn & Co.	Rendham	Mine fire	5
	Oct. 30	Von Storch	D. & H. Coal Co.	Scranton	Mine fire	6
1898	May 26	Kaska, William	Dodson Coal Co.	Middleport	Drowned-water from old workings	6
	Oct. 1	Midvale	Lehigh Valley Coal Co.	Wilkes-Barre	Mine fire	5
	Nov. 5	Exeter	Lehigh Valley Coal Co.	West Pittston	Car fell on cage in shaft	9
1900	Nov. 9	Buck Mountain	Mill Creek Coal Co.	Mahanoy City	Explosion of gas	7
1901	Oct. 25	Bottomwood	Farrish Coal Co.	Plymouth	Explosion of gas	6
1902	Nov. 29	Luke Fidler	Mineral Railroad & Mining Co.	Shamokin	Explosion of gas	7
	Dec. 9	S. Wilkes-Barre	Lehigh & Wilkes-Barre Coal Co.	Wilkes-Barre	Explosion of powder & dynamite	5
1904	Jan. 30	Maple Hill	Philadelphia & Reading Coal & Iron Co.	Mahanoy City	Explosion of powder & dynamite	5
	May 5	Lance	Lehigh & Wilkes-Barre Coal Co.	Plymouth	Explosion of powder & dynamite	5
	May 5	Locust Gap	Philadelphia & Reading Coal & Iron Co.	Locust Gap	Mine fire	5
	May 25	Williamstown	Summit Branch Mining Co.	Williamstown	Suffocated by gas from mine locomotive	10
1905	Nov. 2	Auchincloss	Delaware, Lackawanna & Western Railroad Co.	Nanticoke	Falling down shaft	10
	Feb. 18	Lytle	Lytle Coal Co.	Minersville	Fall of roof	5
	Mar. 9	Clear Spring	Clear Spring Coal Co.	West Pittston	Falling down shaft	7
	Apr. 26	Conyngham	D. & H. Coal Co.	Wilkes-Barre	Falling down shaft	10
1906	May 15	Shenandoah City	Philadelphia & Reading Coal & Iron Co.	Shenandoah	Explosion of powder & dynamite	7
	Aug. 6	Susquehanna No. 7	Susquehanna Collieries Co.	Nanticoke	Explosion of gas	6
1907	Mar. 2	Holden	Delaware, Lackawanna & Western Railroad Co.	Taylor	Explosion of gas	7
1908	June 18	Johnson No. 1	Scranton Coal Co.	Priceburg	Explosion of gas	7
	May 12	Mount Lookout	Temple Iron Co.	Wyoming	Explosion of gas	12
	May 13	Prospect	Lehigh Valley Coal Co.	Midvale	Fall of roof	5
	July 15	Williamstown	Summit Branch Mining Co.	Williamstown	Explosion of powder & dynamite	6
	Aug. 28	Warrior Run	Lehigh Valley Coal Co.	Wilkes-Barre	Mine cars	6

## ACCIDENTS IN WHICH FIVE OR MORE PERSONS WERE KILLED, 1847 - 1969

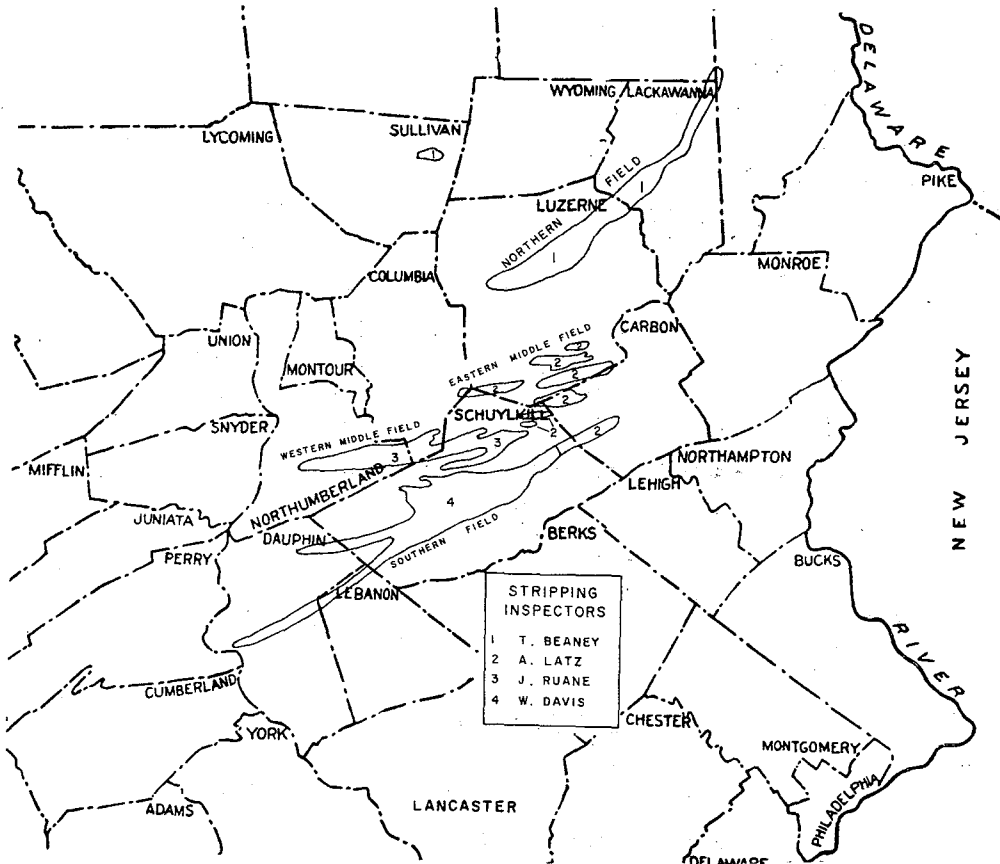
Year	Date	Colliery	Company	Location of Colliery	Cause of Accident	Number Killed
1909	Mar. 2	Pennsylvania No. 14	Pennsylvania Coal Co.	Pittston	Explosion of gas	8
	Nov. 9	Auchincloss	Glen Alden Coal Co.	Nanticoke	Mine fire	9
1910	Jan. 11	Nottingham	Lehigh & Wilkes-Barre Coal Co.	Plymouth	Explosion of gas	7
	Mar. 12	S. Wilkes-Barre No. 5	Lehigh & Wilkes-Barre Coal Co.	Wilkes-Barre	Explosion of gas	7
1911	Apr. 7	Pancoast	Price-Pancoast Coal Co.	Throop	Mine fire	72
	May 10	Plymouth No. 5	Delaware & Hudson Co.	Dorranctown	Suffocated by gas from under ground fire	5
	May 27	Cameron	Mineral Railroad & Mining Co.	Shamokin	Explosion of gas	5
	Sep. 12	Marvine	Delaware & Hudson Co.	Scranton	Mine cars	5
	Oct. 3	Drifton No. 2	Coxe Bros. Co., Inc.	Freeland	Cave-in	5
1912	Jan. 9	Parrish	Parrish Coal Co.	Plymouth	Explosion of gas	6
1913	Aug. 2	East Brookside	Philadelphia & Reading Coal & Iron Co.	Tower City	Explosion of gas	20
1914	May 29	Maryd	Maryd Coal Co.	Maryd	Overwinding of cage	6
	Sep. 16	Lehigh No. 4	Lehigh Coal & Navigation Co.	Lansford	Explosion of gas	7
	Dec. 9	Diamond	Delaware, Lackawanna & Western Railroad Co.	Scranton	Falling down shaft	13
1915	Feb. 17	Prospect	Lehigh Valley Coal Co.	Wilkes-Barre	Explosion of gas	13
1916	Feb. 8	Lance No. 11	Lehigh & Wilkes-Barre Coal Co.	Plymouth	Explosion of gas	7
	Mar. 9	Hollenback No. 2	Lehigh & Wilkes-Barre Coal Co.	Wilkes-Barre	Explosion of gas	6
	Aug. 8	Woodward	Delaware, Lackawanna & Western Railroad Co.	Edwardsville	Explosion of gas	6
1919	June 5	Baltimore Tunnel	Hudson Coal Co.	Wilkes-Barre	Explosion of powder & dynamite	92
	July 8	Lansford	Lehigh Coal & Navigation Co.	Lansford	Explosion of gas	8
1921	Mar. 9	Rahn	Lehigh Coal & Navigation Co.	Seek	Explosion of gas	5
1922	Nov. 3	Eddy Creek	Hudson Coal Co.	Scranton	Premature blast	6
1923	Feb. 21	Alliance	Alliance Coal Mining Co.	Middleport	Explosion of gas	5
	June 26	Richards	Susquehanna Collieries Co.	Mount Carmel	Explosion of gas	5
	Dec. 8	Mount Jessup No. 2	Mount Jessup Coal Co.	Jessup	Fall of roof	5
1924	June 6	Loomis	Glen Alden Coal Co.	Nanticoke	Explosion of gas	14
1925	May 22	Woodward	Glen Alden Coal Co.	Edwardsville	Explosion of gas	7
	Aug. 3	Dorrance	Lehigh Valley Coal Co.	Wilkes-Barre	Explosion of gas	10
1926	May 6	Randolph	So. Penn Collieries Co.	Port Carbon	Explosion of gas	5
	July 3	Pettebone	Glen Alden Coal Co.	Kingston	Explosion of gas	7
	Oct. 30	Susquehanna No. 7	Susquehanna Collieries Co.	Nanticoke	Explosion of gas	9
1927	May 26	Woodward	Glen Alden Coal Co.	Edwardsville	Fall of roof, followed by an explosion of gas	7
1928	May 25	Baltimore No. 5	Hudson Coal Co.	Wilkes-Barre	Explosion of gas	10
1930	Aug. 8	Gilberton	Philadelphia & Reading Coal & Iron Co.	Gilberton	Fall of roof	8
1931	May 29	Richards	Susquehanna Collieries Co.	Mount Carmel	Explosion of gas	5
1935	Jan. 21	Gilberton	Philadelphia & Reading Coal & Iron Co.	Gilberton	Explosion of gas	13
	May 7	S. Wilkes-Barre	Glen Alden Coal Co.	Wilkes-Barre	Piece of rock fell down shaft, struck cage	7

## ACCIDENTS IN WHICH FIVE OR MORE PERSONS WERE KILLED, 1847 - 1969

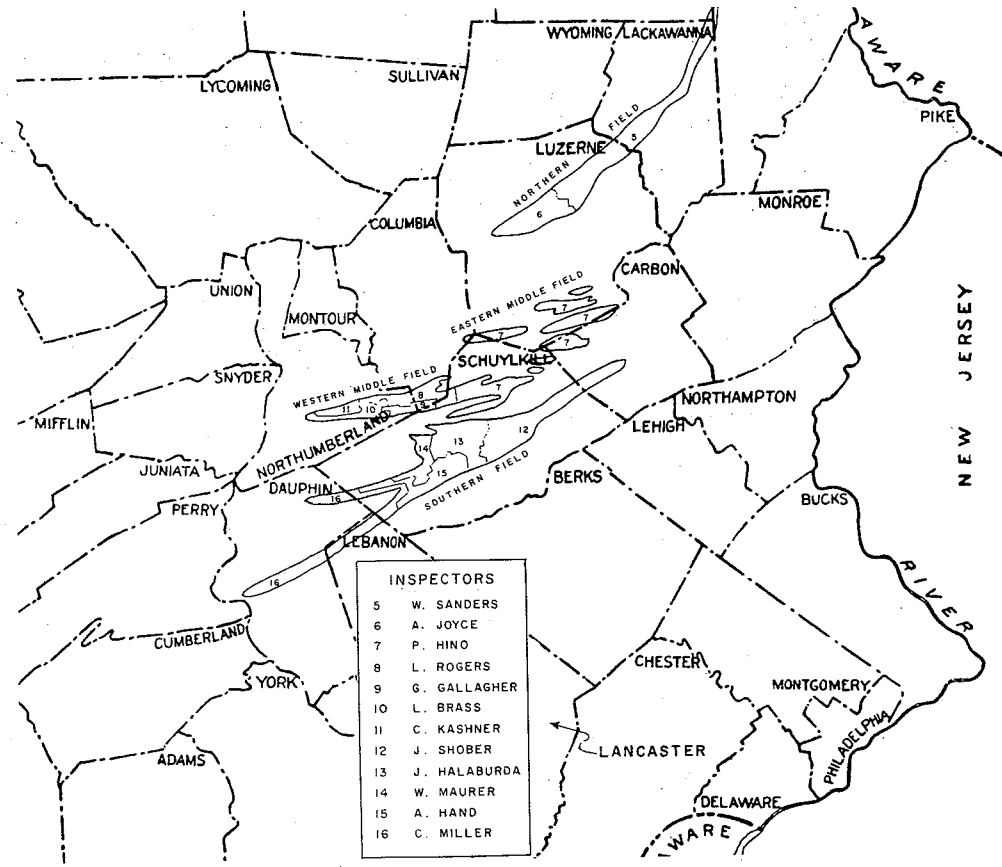
Year	Date	Colliery	Company	Location of Colliery	Cause of Accident	Number Killed
1936	Aug. 24	Clear Spring	Sullivan Trail Coal Co.	West Pittston	Explosion of gas	5
1938	Apr. 27	St. Clair	St. Clair Coal Co.	St. Clair	Explosion of gas	8
	June 2	Volpe	Volpe Mining Co.	Pittstown Twp.	Explosion of gas	10
1943	Sep. 24	Primrose	M. & S. Coal Co.	Minersville	Explosion of gas	14
1947	Jan. 15	Nottingham	Glen Alden Coal Co.	Wilkes-Barre	Explosion of gas	15
	Apr. 10	Schooley	Knox Coal Co.	Exeter Boro.	Explosion of gas	10
	Dec. 11	Franklin	Lehigh Valley Coal Co.	Wilkes-Barre	Explosion of gas	8
1951	Mar. 29	Bottomwood	Glen Alden Coal Co.	Hanover Twp.	Explosion of gas	5
1952	Mar. 27	Holmes Slope	Cano & Martin, Inc.	Forrestville	Drown - blast blew through to old workings	5
1959	Jan. 22	Ewen	Knox Coal Co.	Port Griffith	Drown - river broke into mine	12

ANTHRACITE DIVISION  
 COUNTY--DISTRICT CROSS REFERENCE LIST  
 1969

County	Mine Inspection District
Carbon	2, 7, 12
Columbia	2, 3, 8, 9
Dauphin	16
Lackawanna	1, 5
Lebanon	1, 2, 5, 6, 7
Luzerne	3, 8, 9, 10, 11
Northumberland	2, 3, 4, 7, 8, 9, 12, 13, 14, 15, 16
Schuylkill	1, 5
Sullivan	5
Susquehanna	
Wayne	







# PRODUCTION TABLE

		District 1 Production - net tons					Pounds					
Operators and Collieries		County	Shipped to market	Sold to local trade	Used at colliery for steam and heat	Total production	permis-sible explosives used	Pounds dynamite used	Days worked	Empl-oyes	Fatal acci-dents	Non-fatal acci-dents
Barca Coal & Land Co.												
Booth Strip	Permit 151-1	Sullivan	-	3,906	-	3,906 a	-	-	103	4	-	-
Bliss Coal Co.												
Bliss Strip	Permit 35-3	Sullivan	-	-	17,753	17,753	79,888	1,300	223	*	-	-
Bernice Strip	Permit 35-4	Sullivan	-	-	6,073	6,073	26,112	710	67	7	-	-
Bliss Crushing Plant		Sullivan	-	-	-	-	-	-	290	2	-	-
Total			-	-	23,826	23,826 b	106,000	2,010	9	-	-	-
Blue Coal Corporation												
Huber	Permit 30-49	Luzerne	157	70	143	1	371	-	1,558	33	4	-
Loomis	Permit 30-66	Luzerne	3,418	1,537	3,129	12	8,096	14,572	6,200	59	10	-
Loree	Permit 30-51	Luzerne	6,969	3,132	6,380	21	16,502	236,990	1,179	291	16	-
Middle Road	Permit 30-52	Luzerne	12,903	5,841	12,534	40	31,318	122,140	1,500	215	*	-
Middle Road No. 2	Permit 30-68	Luzerne	3,520	1,540	2,499	10	7,569	29,519	760	43	12	-
No. 214 Slope	Permit 30-38	Luzerne	4,876	2,192	4,464	14	11,546	45,000	-	263	6	-
No. 20 Tunnel Fire Cut		Luzerne	404	182	370	1	957	9,450	80	54	3	-
Stearns	Permit 30-67	Luzerne	2,379	1,069	2,178	10	5,636	80,940	403	50	15	-
Sugar Notch	Permit 30-48	Luzerne	24,253	10,901	22,201	73	57,428	824,740	4,103	301	22	-
Sugar Notch	Permit 30-55	Luzerne	17,382	7,814	15,913	47	41,156	591,054	2,941	229	6	-
Sugar Notch	Permit 30-50	Luzerne	2,000	899	1,831	6	4,736	5,200	-	202	*	-
Sugar Notch	Permit 30-72	Luzerne	250	112	228	1	591	800	-	18	5	-
Truesdale	Permit 30-57	Luzerne	4,500	2,023	4,120	16	10,659	19,186	8,100	54	*	-
Truesdale	Permit 30-58	Luzerne	2,817	1,266	2,578	10	6,671	12,007	5,200	36	*	-
Truesdale	Permit 30-61	Luzerne	4,773	2,145	4,369	10	11,297	18,280	7,750	91	*	-
Truesdale	Permit 30-64	Luzerne	9,824	4,416	8,993	26	23,259	334,029	1,662	127	8	-
Wanamie	Permit 30-59	Luzerne	10,962	4,928	10,036	37	25,963	372,862	1,855	98	*	-
Wanamie	Permit 30-63	Luzerne	2,141	962	1,959	6	5,068	72,783	362	21	*	-
Wanamie	Permit 30-23	Luzerne	14,813	6,659	13,561	38	35,071	105,213	-	252	12	1
Wanamie	Permit 30-21	Luzerne	9,898	4,449	9,061	32	23,440	70,300	-	125	*	-
Wanamie	Permit 30-60	Luzerne	5,908	2,656	5,408	19	13,991	200,929	1,000	130	*	-
Wanamie	Permit 30-6	Luzerne	2,862	1,287	2,621	7	6,777	20,300	-	142	12	-
Wanamie	Permit 30-56	Luzerne	1,273	572	1,165	4	3,014	43,285	215	23	*	-
Wanamie	Permit 30-47	Luzerne	66,079	29,703	60,492	195	156,469	2,247,098	11,180	299	55	-
Total			214,361	96,355	196,233	636	507,585 e	5,476,677	56,048	186	1	11
C. & S. Excavating Co.												
Birdseye	Permit 78-8	Lackawanna	960	1,514	2,798	-	5,272 d	24,200	1,680	143	8	-
Carbondale Coal Co.												
Mine Fire Strip	Permit 64-1	Lackawanna	13,472	21,249	39,306	-	74,027	87,500	7,750	298	80	-
No. 2 Cleaning Plant		Lackawanna	-	-	-	-	-	-	-	216	7	-
Total			13,472	21,249	39,306	-	74,027 e	87,500	7,750	87	-	-
Coalbrook Sales Co.												
Cedar Avenue Fire Cut		Lackawanna	953	1,506	2,805	-	5,264 f	-	-	-	-	-



			District 2 Production - net tons				Pounds						
Operators and Collieries	County		Shipped to market		Sold	Used at	Total	permissible explosives used	Pounds dynamite used	Days worked	Empl- oves	Fatal acci- dents	Non-fatal acci- dents
			By railroad	By truck	local trade	to colliery for steam and heat							
Greenwood Stripping Corporation (Continued)													
26-L & 27-L Primrose	Permit 33-15	Carbon	-	-	-	-	*	-	91	1	-	-	
5-N-3 Mammoth	Permit 33-21	Carbon	-	-	-	-	**	-	34	2	-	-	
Primrose C. B.	Permit 33-23	Carbon	27,301	14,579	4,550	-	-	204,510	279	23	-	-	
48-N-2 Primrose	Permit 33-24	Carbon	5,569	2,974	929	-	-	20,150	113	10	-	-	
Mammoth C. B. Spoon	Permit 33-25	Carbon	-	-	-	-	**	-	10	2	-	-	
Primrose S. B. Spoon	Permit 33-26	Carbon	43,693	23,332	7,282	-	-	231,030	287	35	-	-	
26-L & 27-L Primrose	Permit 33-28	Carbon	-	-	-	-	-	-	17	4	-	-	
44-N-2 Mammoth S.B.	Permit 33-29	Carbon	-	-	-	-	-	15,400	13	9	-	-	
Total			330,628	176,748	55,164	353	562,893 g	-	2,411,937	305	1	22	
Honeybrook Mines, Inc.													
Tresckow	Permit 53-5	Carbon	-	48	391	-	-	439 h	-	57	2	-	
Huss, George													
E-30 Buck Mountain	Permit 57-5	Luzerne	39,387	10,592	16,409	98	66,486	-	933,100	245	20	-	
Buck Mountain	Permit 57-8	Luzerne	2,046	551	853	3	3,453	-	44,050	97	2	-	
Buck Mountain	Permit 57-13	Luzerne	8,568	2,304	3,570	21	14,463	-	279,930	120	9	-	
Buck Mountain	Permit 57-14	Luzerne	38,529	10,361	16,051	97	65,038	-	653,170	245	24	-	
Total			88,530	23,808	36,883	219	149,440 i	-	1,910,250	55	-	-	
Jeddo-Highland Coal Co.													
J-41	Permit 22-8	Luzerne	231,432	186,330	42,973	3,315	464,050 j	-	3,547,077	343	91	8	
J-43	Permit 22-8	Luzerne	145,974	84,379	25,555	1,665	257,573 k	-	2,902,154	350	63	2	
Total			377,406	270,709	68,528	4,980	721,623	-	6,449,231	154	-	10	
Kassa Coal Co.													
Beaver Meadow No. 2	Permit 44-1	Carbon	-	-	3,387	12	3,399 l	-	14,000	173	3	-	
Lehigh Valley Anthracite, Inc.													
Stockton Basin	Permit 16-8	Luzerne	23,108	20,859	4,396	360	48,723 m	-	820,604	318	13	1	
Lattimer	Permit 16-19	Luzerne	4,278	2,468	749	49	7,544 n	-	29,041	175	8	-	
Total			27,386	23,327	5,145	409	56,267	-	849,645	21	-	1	
Meadow Coal & Excavating Co., Inc.													
Oneida	Permit 89-5	Schuylkill	-	66	534	-	600 h	-	200	22	6	-	
District Total			872,410	512,113	203,101	5,983	1,593,607	-	11,922,463	211	673	1 33	

- NOTE: (a) 18,134 tons prepared at Blaschak Breaker - District 7  
 172 tons prepared at Gowen Breaker - District 7  
 (b) 3,508 tons prepared at Blaschak Breaker - District 7  
 1,623 tons prepared at Gowen Breaker - District 7  
 158 tons prepared at Kassa Breaker - District 5  
 (c) 6,253 tons prepared at Blaschak Breaker - District 7  
 532 tons prepared at Gowen Breaker - District 7  
 1,111 tons prepared at Kassa Breaker - District 5  
 (d) 11,642 tons prepared at Blaschak Breaker - District 7  
 279 tons prepared at Gowen Breaker - District 7  
 (e) 2,917 tons prepared at Blaschak Breaker - District 7  
 1,045 tons prepared at Gowen Breaker - District 7  
 190 tons prepared at Kassa Breaker - District 5  
 (f) All coal prepared at Gowen Breaker - District 7.  
 (g) All coal prepared at Greenwood Breaker - District 12  
 (h) All coal prepared at Mazaika Breaker - District 7.

			District 2 Production - net tons				Pounds						
Operators and Collieries	County		Shipped to market		Sold	Used at	Total	permissible explosives used	Pounds dynamite used	Days worked	Empl- oves	Fatal acci- dents	Non-fatal acci- dents
			By railroad	By truck	local trade	to colliery for steam and heat							
NOTE: (i) All coal prepared at Buckley Breaker - District 7. (j) 122,215 tons prepared at Jeddo No. 7 Breaker - District 7 341,835 tons prepared at Hazleton Shaft Breaker - District 7 (k) 256,504 tons prepared at Jeddo No. 7 Breaker - District 7 1,069 tons prepared at Hazleton Shaft Breaker - District 7 (l) All coal prepared at Kassa Breaker - District 5. (m) All coal prepared at Hazleton Shaft Breaker - District 7. (n) All coal prepared at Jeddo No. 7 Breaker - District 7. * Backfilling ** Discontinued operations in 1969													
District 3													
Buck Coal Co.	Permit 49-1	Columbia	-	5,104	-	-	5,104 a	8,200	550	280	3	-	
Capparell Stripping & Construction Co., Inc.													
Locust Mountain	Permit 19-2	Schuylkill	-	12,258	-	-	12,258	90,000	-	181	19	1	
East Bear Ridge	Permit 19-3	Schuylkill	-	18,702	-	-	18,702	39,000	-	216	12	1	
Total			-	30,960	-	-	30,960 b	129,000	-	31	-	2	
Conyngham Contracting Co.													
Alaska No. 2	Permit 91-9	North'd	-	14,535	-	-	14,535	73,000	-	196	17	2	
Locust Gap No. 1	Permit 91-10	North'd	-	6,739	-	-	6,739	-	-	213	13	-	
Locust Gap No. 2	Permit 91-11	North'd	-	1,579	-	-	1,579	2,050	-	42	10	-	
Total			-	22,853	-	-	22,853 c	75,050	-	40	-	2	
D. & Z. Coal Co.													
Sterling	Permit 140-2	North'd	-	3,644	-	-	3,644 d	-	-	110	2	-	
Folger & Chapleski													
Excelsior	Permit 119-2	North'd	-	6,463	-	-	6,463	15,500	-	219	2	-	
Enterprise	Permit 119-3	North'd	-	782	-	-	782	-	-	50	2	-	
Henry Clay	Permit 119-4	North'd	-	50	-	-	50	-	-	10	2	-	
Total			-	7,295	-	-	7,295 e	15,500	-	6	-	-	
Glenn Brass Coal Co.													
West Cameron	Permit 106-5	North'd	-	3,256	-	-	3,256 f	-	-	215	2	-	
Glosek Brothers Coal Sales, Inc.													
Burnside	Permit 45-10	North'd	-	820	-	-	820	4,500	-	54	5	-	
Katherine	Permit 45-11	North'd	-	3,312	-	-	3,312	-	-	52	-	-	
Katherine No. 2	Permit 45-12	North'd	-	980	-	-	980	-	-	13	-	-	
Total			-	5,112	-	-	5,112 g	4,500	-	5	-	-	
Howells, Thomas & Olaf, Stanley													
Marion Heights No. 2	Permit 4-9	North'd	-	809	-	-	809	150	-	52	2	-	
Marion Heights No. 3	Permit 4-10	North'd	-	2,985	-	-	2,985	-	-	200	-	-	
Total			-	3,794	-	-	3,794 d	150	-	2	-	-	
Jet Coal Co.													
Richards	Permit 3-6	North'd	-	1,300	-	-	1,300	150	-	80	4	-	
Richards	Permit 3-7	North'd	-	500	-	-	500	-	-	60	-	-	
Richards	Permit 3-8	North'd	-	1,750	-	-	1,750	-	-	100	-	-	
Total			-	3,550	-	-	3,550 h	150	-	4	-	-	

			District 3 Production - net tons				Pounds perm- sible ex- plosives used	Pounds dynamite used	Days worked	Empl- oves	Fatal acci- dents	Non- fatal acci- dents
Operators and Collieries	County	Permit	Shipped to market By railroad	Sold to local trade	Used at colliery for steam and heat	Total production						
K. & J. Coal Co.	Columbia	Permit 141-1	-	2,451	-	2,451 i	2,000	-	91	2	-	-
Midvalley No. 3	Columbia	Permit 141-1	-	2,451	-	2,451 i	2,000	-	91	2	-	-
Kerris & Helfrick, Inc.	Columbia	Permit 7-1	-	62,353	-	62,353	300,000	-	199	16	-	6
Morris Ridge	North'd	Permit 7-11	-	13,020	-	13,020	40,000	-	62	18	-	-
Edgewood	North'd	Permit 7-16	-	5,376	-	5,376	60,000	-	42	9	-	2
Stewartsville	North'd	Permit 7-18	-	7,266	-	7,266	100,000	-	33	6	-	-
Maysville	North'd	Permit 7-19	-	33,317	-	33,317	50,000	-	178	10	-	-
Trevorton	Columbia	Permit 7-20	-	12,553	-	12,553	100,000	-	43	9	-	-
Sayre N. D.	Columbia	Permit 7-21	-	64,106	-	64,106	150,000	-	242	14	-	-
Sayre S. D.	North'd	Permit 7-22	-	7,396	-	7,396	50,000	-	62	14	-	-
Excelsior	North'd	Permit 7-23	-	4,065	-	4,065	40,000	-	21	9	-	-
Excelsior No. 2	North'd	Permit 7-23	-	4,065	-	4,065	40,000	-	21	9	-	-
Total			-	209,452	-	209,452 j	890,000	-	105	-	-	8
Lehigh Valley Anthracite, Inc.	(Columbia)	Permit 16-9	-	-	-	Shop	-	-	298	23	-	-
Continental	(Schuylkill)	Permit 16-12	85,948	37,600	15,661	504	139,713	859,992	-	298	60	-
Germantown	Columbia	Permit 16-14	140,633	17,865	25,626	825	184,949	2,000,000	-	293	60	11
Primrose	Schuylkill	Permit 16-17	34,730	15,194	6,328	204	56,456	1,000,000	-	298	24	-
Mammoth-Hammond	Schuylkill	Permit 16-18	-	43,659	-	-	43,659	1,000,000	-	293	13	-
Springdale	Schuylkill	Permit 16-18	-	43,659	-	-	43,659	1,000,000	-	293	13	-
Total			261,311	114,318	47,615	1,533	424,777 k	4,859,992	-	180	-	12
Minel, Inc.	North'd	Permit 53-2	-	10,544	-	-	10,544 k	37,252	-	313	6	-
Trevorton	North'd	Permit 52-1	-	10,639	-	-	10,639 l	115,000	-	285	11	-
North Line Coal Co.	North'd	Permit 107-7	-	11,302	-	-	11,302	-	203	6	-	-
Burnside	North'd	Permit 107-8	-	4,875	-	-	4,875	-	116	4	-	-
R. B. F. Coal Co.	North'd	Permit 107-10	-	808	-	-	808	-	54	3	-	-
Hickory Swamp	North'd	Permit 107-10	-	808	-	-	808	-	54	3	-	-
Hickory Swamp	North'd	Permit 107-10	-	808	-	-	808	-	54	3	-	-
Total			-	16,985	-	-	16,985 m	-	-	13	-	-
Reading Anthracite Co.	Schuylkill	Permit 23-8	55,371	11,686	29,751	-	96,808	822,733	-	269	18	-
Knickerbocker M-112	Schuylkill	Permit 23-9	25,395	5,359	13,645	-	44,399	634,098	-	251	18	-
Knickerbocker M-112A	North'd	Permit 23-12	69,382	39	23,217	-	92,638	249,100	-	200	19	-
Trevorton S-5	North'd	Permit 23-13	2,773	-	930	-	3,703	-	74	15	-	-
Trevorton S-5A	North'd	Permit 23-13	2,773	-	930	-	3,703	-	74	15	-	-
Total			152,921	17,084	67,543	-	237,548 n	1,705,931	-	70	-	4
Rosini Coal Co.	North'd	Permit 47-26	-	15,662	-	-	15,662	10,000	-	37	15	-
Bear Valley	North'd	Permit 47-27	-	11,317	-	-	11,317	10,000	-	37	-	-
Sterling No. 2	North'd	Permit 47-28	-	2,450	-	-	2,450	1,000	-	25	-	-
Sterling No. 3	North'd	Permit 47-29	-	11,915	-	-	11,915	10,000	-	54	-	-
Bear Valley	North'd	Permit 47-29	-	11,915	-	-	11,915	10,000	-	54	-	-

			District 3 Production - net tons				Pounds perm- sible ex- plosives used	Pounds dynamite used	Days worked	Empl- oves	Fatal acci- dents	Non- fatal acci- dents
Operators and Collieries	County	Permit	Shipped to market By railroad	Sold to local trade	Used at colliery for steam and heat	Total production						
Rosini Coal Co. (Continued)	North'd	Permit 47-30	-	681	-	681	-	-	10	-	-	-
Sterling No. 4	North'd	Permit 47-31	-	1,580	-	1,580	10,000	-	6	-	-	-
Bear Valley	North'd	Permit 47-32	-	15,654	-	15,654	41,500	-	85	-	-	-
Trevorton No. 8	North'd	Permit 47-32	-	15,654	-	15,654	41,500	-	85	-	-	-
Total			-	59,259	-	59,259 o	82,500	-	-	15	-	-
S. & D. Coal Co.	North'd	Permit 127-1	-	1,200	-	1,200	-	-	80	3	-	-
Hickory Swamp	North'd	Permit 127-2	-	1,250	-	1,250	-	-	80	-	-	-
Hickory Swamp	North'd	Permit 127-3	-	694	-	694	-	-	120	-	-	-
Total			-	3,144	-	3,144 d	-	-	-	3	-	-
S. & S. Contracting Co.	North'd	Permit 109-6	-	310	-	310	-	-	12	3	-	-
Midvalley No. 2	North'd	Permit 109-7	-	775	-	775	-	-	40	-	-	-
Midvalley No. 3	North'd	Permit 109-8	-	5,272	-	5,272	-	-	188	-	-	-
Richards	North'd	Permit 109-8	-	5,272	-	5,272	-	-	188	-	-	-
Total			-	6,357	-	6,357 p	-	-	-	3	-	-
Savitski Brothers Coal Sales	North'd	Permit 76-5	-	154	-	154	-	-	11	3	-	-
Roaring Creek	North'd	Permit 76-6	-	2,363	-	2,363	-	-	102	-	-	-
Roaring Creek No. 2	North'd	Permit 76-7	-	10	-	10	-	-	5	-	-	-
Reliance No. 1	North'd	Permit 76-7	-	10	-	10	-	-	5	-	-	-
Total			-	2,527	-	2,527 h	-	-	-	3	-	-
Split Vein Coal Co.; Inc.	North'd	Permit 113-3	-	13,070	-	13,070	52,685	-	251	4	-	-
Henry Clay	North'd	Permit 113-11	-	1,364	-	1,364	-	-	44	2	-	-
Hickory	North'd	Permit 113-11	-	1,364	-	1,364	-	-	44	2	-	-
Total			-	14,434	-	14,434 q	52,685	-	-	6	-	-
District Total			444,232	552,762	115,158	1,533	1,083,685	7,977,910	550	213	512	28

NOTE: (a) 700 tons prepared at D. & Z. Breaker - District 11  
 784 tons prepared at Split Vein Breaker - District 11  
 3,620 tons prepared at Swift Breaker - District 11  
 (b) All coal prepared at Rosa Breaker - District 7.  
 (c) All coal prepared at Diamond Breaker - District 8  
 (d) All coal prepared at D. & Z. Breaker - District 11.  
 (e) All coal prepared at Lower Region Breaker - District 11.  
 (f) 2,665 tons prepared at Sunshine Breaker - District 10  
 591 tons prepared at Bar-Mac Breaker - District 11  
 (g) 275 tons prepared at D. & Z. Breaker - District 11  
 4,837 tons prepared at Sunshine Breaker - District 10  
 (h) All coal prepared at Savitski Breaker - District 9.  
 (i) All coal prepared at Mammoth Breaker - District 8.

(j) All coal prepared at Glen Burn Breaker - District 10.  
 (k) All coal prepared at Sunshine Breaker - District 10.  
 (l) All coal prepared at Reidinger Breaker - District 11.  
 (m) 5,310 tons prepared at Diminick Breaker - District 11  
 6,508 tons prepared at Split Vein Breaker - District 11  
 1,853 tons prepared at Savitski Breaker - District 9  
 3,292 tons prepared at Glen Burn Breaker - District 10  
 22 tons prepared at D. & Z. Breaker - District 11  
 (n) 96,341 tons prepared at Trevorton Breaker - District 11  
 141,207 tons prepared at New St. Nicholas Breaker-Dist.12  
 (o) All coal prepared at Carbon Run Breaker - District 10.

		District 3 Production - net tons					Pounds					
		Shipped to market		Sold	Used at	permis-						
		By	By	to	colliery	sible ex-		Pounds dynamite used	Days worked	Empl- eyes	Fatal acci- dents	Non-fatal acci- dents
Operators and Collieries	County	railroad	truck	local trade	for steam and heat	Total production:	plosives used					
NOTE: (p) 2,390 tons prepared at D. & Z. Breaker - District 11												
3,143 tons prepared at Savitski Breaker - District 9												
334 tons prepared at Split Vein Breaker - District 11												
490 tons prepared at Swift Breaker - District 11												
(q) All coal prepared at Split Vein Breaker - District 11.												

		District 4 Production - net tons					Pounds						
		Shipped to market		Sold	Used at	permis-							
		By	By	to	colliery	sible ex-		Pounds dynamite used	Days worked	Empl- eyes	Fatal acci- dents	Non-fatal acci- dents	
Operators and Collieries	County	railroad	truck	local trade	for steam and heat	Total production:	plosives used						
Bell Coal Co.	Permit 121-2	Schuylkill	2,832	4,120	5,103	46	12,101 a	-	-	303	2	-	-
Blue Bell Enterprises, Inc.	Permit 14-2	Schuylkill	612	864	902	32	2,410 b	-	-	186	2	-	-
Bridy, Incorporated	Permit 31-8	Schuylkill	2,216	4,864	2,931	32	10,043 c	-	-	166	9	-	-
C. L. S. Coal Co.	Permit 125-2	Schuylkill	56	2,774	87	-	2,917 d	-	-	207	2	-	-
Connors, Paul J.	Permit 134-2	Schuylkill	1,846	-	-	-	1,846 e	-	-	128	2	-	-
D. & F. Coal Co.	Permit 138-2	Schuylkill	4,120	13,328	6,274	92	23,814 f	10,500	-	286	11	-	-
F. & M. Coal Co.	Permit 145-1	Schuylkill	812	1,416	910	22	3,160 g	-	-	190	3	-	-
Five Points Coal Co.	Permit 155-1	Schuylkill	10	54	96	-	160 h	-	-	10	3	-	-
Industrial Coal Sales, Inc.	Permit 144-1	Schuylkill	6,367	28,259	1,213	-	35,839 i	1,100	350	242	8	-	-
K. & K. Coal Co.	Permit 136-2	Schuylkill	3,620	6,718	658	14	11,010 j	-	-	240	3	-	-
Klinger Coal Co.	Permit 152-1	Schuylkill	128	270	-	2	400 k	-	-	28	1	-	-
Kocher Coal Co., Inc.	Permit 90-7	Schuylkill	68,692	54,954	13,670	69	137,385	1,028,160	-	283	22	-	2
Porter Tunnel	Permit 90-8	Schuylkill	9,171	7,337	1,825	9	18,342	-	-	136	5	-	-
Porter Tunnel	Permit 90-8	Schuylkill	9,171	7,337	1,825	9	18,342	-	-	136	5	-	-
Total			77,863	62,291	15,495	78	155,727 l	1,028,160	-	27	-	-	2
Koury Coal Co.	Permit 139-2	Schuylkill	3,122	3,218	1,929	36	8,305 m	-	-	262	3	-	-
Krell, Philip Orchard	Permit 61-3	Schuylkill	248	680	1,665	12	2,605 n	-	450	255	1	-	-
Mohan, James E.	Permit 148-1	Schuylkill	-	89	61	-	150 o	-	-	8	2	-	-
Mohan	Permit 148-1	Schuylkill	-	89	61	-	150 o	-	-	8	2	-	-
Mountain Anthracite Co.	Permit 143-2	Schuylkill	5,378	11,536	-	51	16,965 k	-	-	249	5	-	-
Buck Mountain	Permit 143-2	Schuylkill	5,378	11,536	-	51	16,965 k	-	-	249	5	-	-

		District 4 Production - net tons					Pounds						
		Shipped to market		Sold	Used at	permis-							
		By	By	to	colliery	sible ex-		Pounds dynamite used	Days worked	Empl- eyes	Fatal acci- dents	Non-fatal acci- dents	
Operators and Collieries	County	railroad	truck	local trade	for steam and heat	Total production:	plosives used						
Pacine Coal Co.	Permit 146-1	Schuylkill	1,262	4,790	1,840	16	7,908 p	1,500	-	189	5	-	-
R. & S. Coal Co.	Permit 153-1	Schuylkill	126	617	427	8	1,178 q	-	-	92	3	-	-
Reading Anthracite Co.	Permit 23-3	Schuylkill	-	-	-	-	-	-	-	232	1	-	-
Wadesville P-33	Permit 23-4	Schuylkill	86,032	18,156	46,226	-	150,414	2,578,160	-	232	83	-	4
St. Clair P-48	Permit 23-5	Schuylkill	153,361	32,365	82,401	-	268,127	4,609,380	-	283	65	-	6
St. Clair P-44	Permit 23-6	Schuylkill	21,702	4,580	11,660	-	37,942	-	-	127	13	-	2
Pine Knot P-39	Permit 23-14	Schuylkill	-	-	-	-	-	-	-	232	1	-	-
Buck Run P-45A	Permit 23-15	Schuylkill	63,837	13,471	34,294	-	111,602	2,064,550	-	308	27	-	5
Potts-Bannan P-50	Permit 23-16	Schuylkill	33,507	7,071	18,004	-	58,582	585,947	-	301	16	-	1
Total			358,439	75,643	192,585	-	626,667 r	9,838,037	-	206	-	-	18
Schock Co., Norman C.	Permit 59-3	Schuylkill	-	1,127	9,124	-	10,251 s	2,750	-	297	5	-	-
Schuylkill Contracting Co.	Permit 36-3	Schuylkill	5,349	5,717	7,376	-	18,442	378,100	-	163	19	-	-
Mammoth & Holmes	Permit 36-6	Schuylkill	13,224	14,134	18,238	-	45,596	342,200	-	198	9	-	1
Fine Hill	Permit 36-9	Schuylkill	1,804	1,927	2,487	-	6,218	-	-	115	5	-	-
Seltzer City	Permit 36-9	Schuylkill	1,804	1,927	2,487	-	6,218	-	-	115	5	-	-
Total			20,377	21,778	28,101	-	70,256 t	720,300	-	33	-	-	1
Seitzinger Bros. Leasing, Inc.	Permit 150-1	Schuylkill	-	240	2,730	30	3,000 u	16,300	-	150	4	-	-
Fairlane Village	Permit 150-1	Schuylkill	-	240	2,730	30	3,000 u	16,300	-	150	4	-	-
Swatara Coal Co.	Permit 70-2	Schuylkill	12,298	3,540	2,609	187	18,634	41,250	400	247	14	-	2
Mammoth	Permit 70-4	Schuylkill	14,842	4,272	3,148	227	22,489	51,000	800	247	13	-	-
Primrose Basin	Permit 70-4	Schuylkill	27,140	7,812	5,757	414	41,123 v	92,250	1,200	27	-	-	2
Total			27,140	7,812	5,757	414	41,123 v	92,250	1,200	27	-	-	2
Valent Coal Co., Frank	Permit 105-2	Schuylkill	9,120	7,068	6,384	228	22,800 n	6,390	-	272	4	-	-
Silver Creek	Permit 105-2	Schuylkill	9,120	7,068	6,384	228	22,800 n	6,390	-	272	4	-	-
Valley Enterprises, Inc.	Permit 133-1	Schuylkill	-	80	168	2	250	-	75	25	2	-	-
Brockton No. 1	Permit 133-2	Schuylkill	-	120	350	5	475	-	50	62	2	-	-
Brockton No. 2	Permit 133-2	Schuylkill	-	200	518	7	725 w	-	125	4	-	-	-
Total			-	200	518	7	725 w	-	125	4	-	-	-
W. & W. Construction Co.	Permit 132-1	Schuylkill	2,920	10,192	7,266	62	20,440	93,000	-	300	8	-	-
Mammoth	Permit 132-2	Schuylkill	912	4,496	1,916	26	7,350	31,000	-	276	6	-	-
Primrose	Permit 132-2	Schuylkill	912	4,496	1,916	26	7,350	31,000	-	276	6	-	-
Total			3,832	14,688	9,182	88	27,790 x	124,000	-	14	-	-	-
District Total			529,526	274,444	293,972	1,208	1,099,150	11,841,287	2,125	238	389	-	23

		District 4 Production - net tons					Pounds						
		Shipped to market		Sold to	Used at	Total	permissible explosives used	Pounds dynamite used	Days worked	Empl- oves	Fatal acci- dents	Non-fatal acci- dents	
Operators and Collieries	County	By railroad	By truck	local trade	colliery for steam and heat	production							
NOTE: (a)		8,610				(m)	63						
		3,561					877						
(b)		1,608					1,152						
(c)		802				(n)	All coal						
		400				(o)	All coal						
		690				(p)	1,582						
		3,671					3,163						
		350					2,186						
		4,566					395						
		170					158						
		196					424						
(d)		All coal				(q)	60						
(e)		All coal					250						
(f)		426				(r)	868						
		994				(s)	All coal						
		1,300					9,809						
		10,950					442						
		2,144				(t)	50,074						
		900					20,182						
(g)		7,100				(u)	All coal						
		1,760				(v)	All coal						
		900				(w)	250						
		500				(x)	475						
(h)		All coal					6,000						
(i)		All coal					3,240						
(j)		7,722					6,030						
		245					9,740						
		2,681					2,780						
(k)		362											
(l)		All coal											
(m)		754											
		102											
		4,057											
		24											
		1,061											
		71											
		81											
		63											

		District 5 Production - net tons					Pounds						
		Shipped to market		Sold to	Used at	Total	permissible explosives used	Pounds dynamite used	Days worked	Empl- oves	Fatal acci- dents	Non-fatal acci- dents	
Operators and Collieries	County	By railroad	By truck	local trade	colliery for steam and heat	production							
Ace Anthracite, Inc.													
Ace Bank	Lackawanna	-	62	557	6	625	-	-	249	1	-	-	
Ace Breaker	Lackawanna	-	-	-	-	-	-	-	249	3	-	-	
Total		-	62	557	6	625 a	-	-		4	-	-	
Ace Coal Co.													
Ace Breaker	Lackawanna	-	-	-	-	-	b	-	23	7	-	1	
American Silt Processing Co., Inc.													
Waddell Washery	Lackawanna	-	-	-	-	-	-	-	197	5	-	-	
Waddell Bank	Lackawanna	1,900	-	-	-	1,900	-	-	197	2	-	-	
Total		1,900	-	-	-	1,900 c	-	-		7	-	-	
Barca Coal & Land Co., Inc.													
Booth Bank	Sullivan	-	782	-	-	782	-	-	76	1	-	-	
Booth Breaker	Sullivan	-	-	-	-	-	-	-	76	4	-	-	
Total		-	782	-	-	782 d	-	-		5	-	-	
Baumann, John C.													
D. & H. Railroad Bank	Lackawanna	3,050	38,056	374	4	41,484 e	-	-	80	4	-	1	
Blue Coal Corporation													
Bag Plant	Lackawanna	-	-	-	-	-	-	-	257	13	-	-	
D. & H. Railroad Bank	Lackawanna	393	177	360	1	931 b	-	-	7	3	-	-	
Huber Breaker	Luzerne	-	-	-	-	-	-	-	232	50	-	-	
Huber General	Luzerne	-	-	-	-	-	-	-	232	116	-	5	
Loree General	Luzerne	-	-	-	-	-	-	-	157	7	-	-	
No. 134 Slope	Luzerne	1,797	808	1,645	6	4,256	-	-	181	2	-	-	
Sugar Notch Bank	Luzerne	899	404	823	2	2,128	-	-	181	2	-	-	
Total		3,089	1,389	2,828	9	7,315 f	-	-		193	-	5	
C. B. M. Coal Co.													
Lehigh Valley Railroad Bank	Luzerne	202	91	185	1	479	-	-	290	2	-	-	
Empire Bank	Luzerne	34,563	38,811	15,259	713	89,346	-	-	208	9	-	-	
Total		34,765	38,902	15,444	714	89,825 f	-	-		11	-	-	
Coalbrook Iron & Metals													
Coalbrook Bank	Lackawanna	4,927	15,168	-	-	20,095 g	-	-	120	4	-	-	
DeAngelis, Inc.													
Boland Breaker	Lackawanna	-	-	-	-	-	b	-	23	8	-	-	
G.M.C. Energy Fuels, Inc.													
Ziffenblatt Cleaning Plant	Luzerne	-	-	-	-	-	-	-	187	5	-	-	
Lafin Heights Coal Co.													
Lafin Bank	Luzerne	-	-	-	-	-	b	-	15	2	-	-	
Lehigh Valley Anthracite, Inc.													
Empire Bank	Luzerne	4,535	5,094	2,002	93	11,724 h	-	-	41	9	-	-	
Franklin Cleaning Plant	Luzerne	-	-	-	-	-	-	-	242	14	-	1	
Harry E. Bank	Luzerne	1,031	1,583	662	29	3,305	-	-	170	2	-	-	

		District 5 Production - net tons				Pounds				Fatal		Non-			
Operators and Collieries		Shipped to market		Sold to colliery		Used at colliery		Total production		Pounds dynamite used		Days worked		Empl- Fatal fatal	
County		By		By		By		By		By		By		By	
		railroad		truck		local trade		for steam and heat		permissible explosives		worked		accidents	
Lehigh Valley Anthracite, Inc. (Continued)															
Harry E. Breaker		Luzerne	18,430	16,403	6,041	307	41,181	-	-	-	170	36	-	1	-
Prospect Bank		Luzerne	-	-	-	-	-	-	-	-	242	3	-	1	-
Prospect Cleaning Plant		Luzerne	-	-	-	-	-	-	-	-	242	6	-	1	-
Total			23,996	23,080	8,705	429	56,210 i	-	-	-	70	-	4	-	-
Moffat Premium Anthracite, Inc.															
Taylor Breaker		Lackawanna	-	-	-	-	-	-	-	-	124	54	-	3	-
Mountain Coal Co.		Luzerne	2,890	4,440	1,859	80	9,269 j	7,250	200	153	10	-	1	-	-
No. 32 Pittston Slope		Luzerne	-	-	-	-	-	-	-	-	296	10	-	-	-
Northwest Mining Co., Inc.		Lackawanna	-	-	-	-	-	-	-	-	246	26	-	-	-
Marvine Sizing Plant		Lackawanna	-	-	-	-	-	-	-	-	-	36	-	-	-
Raymond Breaker		Lackawanna	-	-	-	-	-	-	-	-	-	-	-	-	-
Total			-	-	-	-	-	-	-	-	-	-	-	-	-
O. S. C. Co.															
Stillwater Bank		Susquehanna	-	638	-	-	638 b g	-	-	-	20	4	-	-	-
Olyphant Premium Anthracite, Inc.		Lackawanna	45,806	11,265	22,597	455	80,123	-	-	-	265	5	-	-	-
Olyphant Bank		Lackawanna	-	-	-	-	-	-	-	-	265	18	-	-	-
Olyphant Cleaning Plant		Lackawanna	-	-	-	-	-	-	-	-	-	23	-	-	-
Total			45,806	11,265	22,597	455	80,123 j	-	-	-	530	23	-	-	-
Opalka Brothers															
Boland Colliery		Lackawanna	-	340	-	-	340 k	340	50	88	3	-	-	-	-
O'Toole, John F.		Lackawanna	-	-	-	-	-	-	-	-	256	1	-	-	-
O'Toole Sizing Plant		Lackawanna	-	-	-	-	-	-	-	-	-	-	-	-	-
Penbrook Coal Co.		Lackawanna	825	-	-	-	825	-	-	-	116	1	-	-	-
Penbrook Bank		Lackawanna	-	-	-	-	-	-	-	-	116	6	-	-	-
Penbrook Breaker		Lackawanna	-	-	-	-	-	-	-	-	-	7	-	-	-
Total			825	-	-	-	825 l	-	-	-	232	7	-	-	-
Perry Coal Sales Co., Inc., Thomas															
Perry Bank		Lackawanna	29,705	-	-	-	29,705	-	-	-	253	2	-	-	-
Avoca Bank		Luzerne	192	394	2,311	28	2,925	-	-	-	261	1	-	-	-
Avoca Cleaning Plant		Luzerne	-	-	-	-	-	-	-	-	261	3	-	1	-
Total			29,897	394	2,311	28	32,630 m	-	-	-	514	6	-	1	-
Pompey Coal Co.															
Pompey Bank		Lackawanna	2,415	-	-	-	2,415 c	-	-	-	171	2	-	-	-
Popple Coal Sales Co., Raymond															
Dunmore Bank		Luzerne	-	73,054	-	-	73,054 g	-	-	-	162	7	-	-	-
Racho, George		Luzerne	-	14,557	-	-	14,557 g	-	-	-	37	7	-	-	-
Exeter Bank		Luzerne	-	-	-	-	-	-	-	-	-	-	-	-	-
Scranton Excavating Co.		Lackawanna	3,191	1,102	5,567	-	9,860 n	-	-	-	278	3	-	-	-
Taylor Bank		Lackawanna	-	-	-	-	-	-	-	-	-	-	-	-	-

		District 5 Production - net tons				Pounds				Fatal		Non-			
Operators and Collieries		Shipped to market		Sold to colliery		Used at colliery		Total production		Pounds dynamite used		Days worked		Empl- Fatal fatal	
County		By		By		By		By		By		By		By	
		railroad		truck		local trade		for steam and heat		permissible explosives		worked		accidents	
Sebastopol Coal Co.															
Sebastopol Bank		Luzerne	6,468	-	-	-	6,468 o	-	-	-	188	5	-	-	-
Silverbrook Anthracite, Inc.		Luzerne	-	-	-	-	-	-	-	-	305	7	-	-	-
Kassa Breaker		Luzerne	-	-	2,384	6	2,390 p	-	-	-	-	-	-	-	-
Woodward Storage		Luzerne	-	-	2,384	6	2,390	-	-	-	-	7	-	-	-
Total			-	-	2,384	6	2,390	-	-	-	-	7	-	-	-
Taminini Construction Co.															
O. & W. Bank		Susquehanna	88	140	259	-	487 q b	-	-	-	13	4	-	-	-
Vullo & Vantaggi Bank		Luzerne	58	494	1,085	8	1,645 r	-	-	-	40	3	-	-	-
District Total			163,365	223,863	63,970	1,739	452,937	7,590	250	191	502	-	16	-	-

NOTE: (a) All coal prepared at Ace Breaker. (k) All coal prepared at Boland Breaker.  
 (b) Abandoned during 1969. (l) All silt to Waddell Washery.  
 (c) All coal prepared at Waddell Washery. (m) 100 tons prepared at Waddell Washery  
 (d) All coal prepared at Booth Breaker. 2,530 tons prepared at Ace Breaker  
 (e) 420 tons prepared at Ace Breaker 295 tons prepared at Harry E. Breaker  
 3,050 tons prepared at Waddell Washery 29,705 tons prepared at Avoca Cleaning Plant  
 38,014 Direct Sales (n) 9,444 tons prepared at Taylor Breaker  
 (f) All coal prepared at Huber Breaker. 416 tons prepared at Raymond Breaker  
 (g) Direct Sales (o) All coal prepared at Ziffenblatt Breaker.  
 (h) Empire Bank changed to C.B.M. Coal Co. in February 1969. (p) Coal from storage at Kassa Breaker for two years.  
 (i) 27,564 tons prepared at Harry E. Breaker (q) All coal prepared at Raymond Breaker.  
 25,341 tons prepared at Jeddo No. 7 Breaker (r) All coal prepared at Penbrook Breaker.  
 (j) All coal prepared at Harry E. Breaker.

		District 6				Pounds				Fatal		Non-			
Operators and Collieries		Shipped to market		Sold to colliery		Used at colliery		Total production		Pounds dynamite used		Days worked		Empl- Fatal fatal	
County		By		By		By		By		By		By		By	
		railroad		truck		local trade		for steam and heat		permissible explosives		worked		accidents	
Blue Coal Corporation															
Wanamie Banks		Luzerne	7,491	3,367	6,858	25	17,741	-	-	-	72	6	-	-	-
Wanamie Colliery		Luzerne	96,094	43,195	87,969	289	227,547	209,475	-	-	245	378	-	47	-
Warrior Run Banks		Luzerne	2,881	1,295	2,638	10	6,824	-	-	-	67	5	-	-	-
Total			106,466	47,857	97,465	324	252,112 a	209,475	-	-	384	389	-	47	-
Ciaraconi Coal Co., Inc.															
Ciaraconi Slope		Luzerne	6,920	12,372	1,678	10	20,980 b	23,750	-	-	234	18	-	5	-
Glen-Nan Coal Co., Inc.		Luzerne	174,900	286,216	71,653	151	532,920 c	540,525	28,950	236	369	1	70	-	-
No. 3 Slope		Luzerne	-	-	-	-	-	-	-	-	-	-	-	-	-
L. J. B., Inc.		Luzerne	943	1,549	867	29	3,388 d	-	-	-	19	5	-	-	-
No. 5 Banks		Luzerne	-	-	-	-	-	-	-	-	-	-	-	-	-



		District 6 Production - net tons				Pounds				Non-	
		Shipped to market	Sold to	Used at	Total	permis-	Pounds	Days	Empl-	Fatal	fatal
		By	to	for	production:	sible ex-	dynamite	worked	oves	acci-	acci-
Operators and Collieries	County	By railroad	local trade	colliery and heat		plives used	used			dents	dents
Pollock, Inc., Ken Wanamie Silt Bank	Luzerne	-	311,638	-	311,638 e	-	-	253	9	-	-
Silverbrook Anthracite, Inc. No. 6 Banks	Luzerne	-	16,884	43	16,927 f	-	-	247	6	-	-
Susquehanna Coal Co. Glen Lyon Breaker	Luzerne	-	-	-	-	-	-	208	104	-	4
<b>District Total</b>		<b>289,229</b>	<b>659,632</b>	<b>188,547</b>	<b>1,137,965</b>	<b>773,750</b>	<b>28,950</b>	<b>233</b>	<b>900</b>	<b>1</b>	<b>126</b>

NOTE: (a) All coal prepared at Huber Breaker - District 5.  
 (b) All coal prepared at Glen Lyon Breaker.  
 (c) 460,971 tons prepared at Glen Lyon Breaker  
 52,772 tons prepared at Huber Breaker - District 5  
 5,091 tons prepared at Kassa Breaker - District 5  
 1,086 tons prepared at Penbrook Breaker - District 5  
 (d) 2,980 tons prepared at Harry E. Breaker - District 5  
 408 tons prepared at Penbrook Breaker - District 5  
 (e) All coal shipped unprepared to United Gas Improvement Hunlock Plant.  
 (f) All coal prepared at Kassa Breaker - District 5. Ceased operation during 1969.

		District 7 Production - net tons				Pounds				Non-	
		Shipped to market	Sold to	Used at	Total	permis-	Pounds	Days	Empl-	Fatal	fatal
		By	to	for	production:	sible ex-	dynamite	worked	oves	acci-	acci-
Operators and Collieries	County	By railroad	local trade	colliery and heat		plives used	used			dents	dents
B-D Mining Co., Inc. B-D Fine Coal Plant	Schuylkill	-	-	-	-	-	-	229	20	-	3
Gilberton Bank	Schuylkill	38,038	5,987	-	44,025	-	-	38	11	-	-
St. Nicholas Slush Bank	Schuylkill	182,098	28,664	-	210,762	-	-	163	12	-	-
Tunnel Ridge Bank	Schuylkill	5,899	652	-	6,551	-	-	23	*	-	-
<b>Total</b>		<b>226,035</b>	<b>35,303</b>	<b>-</b>	<b>261,338 a</b>	<b>-</b>	<b>-</b>	<b>-</b>	<b>43</b>	<b>-</b>	<b>3</b>
Blaschak Coal Co., Inc. Blaschak Breaker	Schuylkill	-	-	-	-	-	-	225	28	-	3
Skidmore Slope	Schuylkill	-	-	-	-	b	-	48	1	-	-
<b>Total</b>		<b>-</b>	<b>-</b>	<b>-</b>	<b>-</b>	<b>-</b>	<b>-</b>	<b>-</b>	<b>29</b>	<b>-</b>	<b>3</b>
Buckley Coal Corporation Eckley Breaker	Luzerne	-	-	-	-	-	-	240	29	-	-
Capparell Coal Co., Inc. Rosa Breaker	Schuylkill	-	-	-	-	-	-	236	30	-	-
Capparell Stripping & Construction Co., Inc. Gilberton Bank	Schuylkill	4,081	3,570	4,973	12,753	-	-	196	10	-	-
Kohinoor Bank	Schuylkill	6,240	5,460	7,590	19,430	-	-	190	14	-	-
William Penn Bank	Schuylkill	2,003	1,753	2,441	6,261	-	-	40	20	-	-
<b>Total</b>		<b>12,324</b>	<b>10,783</b>	<b>15,004</b>	<b>38,444 c</b>	<b>-</b>	<b>-</b>	<b>44</b>	<b>-</b>	<b>-</b>	<b>-</b>
Coleby Coal Co., Inc. Audenried Bank	Schuylkill	11,179	-	-	11,179	-	-	20	3	-	-
Candleton Bank	Schuylkill	49,389	-	-	49,389	-	-	180	6	-	-

		District 7 Production - net tons				Pounds				Non-	
		Shipped to market	Sold to	Used at	Total	permis-	Pounds	Days	Empl-	Fatal	fatal
		By	to	for	production:	sible ex-	dynamite	worked	oves	acci-	acci-
Operators and Collieries	County	By railroad	local trade	colliery and heat		plives used	used			dents	dents
Coleby Coal Co., Inc. (Continued) Candleton Washery	Schuylkill	-	-	-	-	-	-	180	6	-	1
<b>Total</b>		<b>60,568</b>	<b>-</b>	<b>-</b>	<b>60,568 d</b>	<b>-</b>	<b>-</b>	<b>-</b>	<b>15</b>	<b>-</b>	<b>1</b>
DiCasimiro Contracting Co. North Mahanoy Bank	Schuylkill	4,224	6,694	5,375	16,463	-	-	130	4)	-	-
Pleasant Hill Bank	Schuylkill	761	964	960	2,685	-	-	56	)	-	-
<b>Total</b>		<b>4,985</b>	<b>7,658</b>	<b>6,335</b>	<b>19,148 e</b>	<b>-</b>	<b>-</b>	<b>4</b>	<b>-</b>	<b>-</b>	<b>-</b>
E. & M. Coal Co. Skidmore Slope	Schuylkill	-	-	-	-	f	-	105	2	-	-
Farace Coal Co., Inc., J. Jr. Junedale Bank	Carbon	241	125	467	833 g	-	-	11	5	-	-
Forgoth Brothers Coal Co. Buck Mountain Slope	Schuylkill	25	10	319	354 h	425	200	200	2	-	-
Forsum Coal Co., Inc. No. 7 Little Buck Slope	Schuylkill	91	44	452	587 h i	400	200	115	*	-	-
Generose Coal Co., J. Buck Mountain Bank	Carbon	11,063	2,813	4,875	18,751 j	-	-	200	5	-	-
Gilberton Coal Co. Mahanoy City Bank	Schuylkill	507	823	656	1,986 k	-	-	18	*	-	-
Gowen Coal Co. Gowen Breaker	Luzerne	-	-	-	-	-	-	158	14	-	-
Gowen Cleaning Plant	Luzerne	-	-	-	-	-	-	158	4	-	-
<b>Total</b>		<b>-</b>	<b>-</b>	<b>-</b>	<b>-</b>	<b>-</b>	<b>-</b>	<b>-</b>	<b>18</b>	<b>-</b>	<b>-</b>
Honeybrook Mines, Inc. Audenried Bank	Schuylkill	16,437	5,804	27,305	49,546	-	-	109	3	-	-
Beaver Brook Bank	Luzerne	2,609	921	4,335	7,865	-	-	74	4	-	-
Candleton Bank	Schuylkill	1,619	387	1,022	3,028	-	-	11	3	-	-
Honeybrook Breaker	Schuylkill	-	-	-	-	-	-	225	27	-	4
<b>Total</b>		<b>20,665</b>	<b>7,112</b>	<b>32,662</b>	<b>60,439 g</b>	<b>-</b>	<b>-</b>	<b>37</b>	<b>-</b>	<b>-</b>	<b>4</b>
Huss, George Beaver Brook Bank	Luzerne	-	33,005	-	33,005	-	-	237	4	-	-
Beaver Brook Washery	Luzerne	-	-	-	-	-	-	237	4	-	-
<b>Total</b>		<b>-</b>	<b>33,005</b>	<b>-</b>	<b>33,005 l</b>	<b>-</b>	<b>-</b>	<b>-</b>	<b>8</b>	<b>-</b>	<b>-</b>
Jeddo-Highland Coal Co. Highland No. 5 Bank	Luzerne	140,046	112	-	140,469	-	-	256	9	-	-
Highland No. 5 Breaker	Luzerne	-	-	311	469	-	-	216	27	-	1
Jeddo No. 7 Breaker	Luzerne	-	-	-	-	-	-	234	62	1	3
<b>Total</b>		<b>140,046</b>	<b>112</b>	<b>-</b>	<b>140,469 m</b>	<b>-</b>	<b>-</b>	<b>98</b>	<b>1</b>	<b>1</b>	<b>4</b>
Kassa Coal Co. No. 4 Slope	Carbon	-	-	5,486	5,500 n	800	-	240	4	-	-

		District 7 Production - net tons				Pounds	permis-	Pounds	Days	Empl-	Fatal	Non-
		Shipped to market	Sold to	Used at	Total	sible ex-	dynamite	worked	oyes	acci-	fatal	
Operators and Collieries	County	By railroad	By truck	local trade	production	plosives used	used			dents	acci-	
Lee Mining Co., Inc., J. F. Drifton No. 1 Slope	Luzerne	4,445	7,009	5,642	-	17,096 o	7,000	-	204	12	-	-
Lehigh Valley Anthracite, Inc.												
Admiral Bank	Luzerne	22,399	13	-	-	22,412	-	85	6	-	-	-
Buck Mountain Bank	Schuylkill	650	999	1,180	17	2,846	-	30	3	-	-	-
Hazleton No. 1 Silt Bank	Luzerne	66,757	40	-	-	66,797	-	128	11	-	-	-
Hazleton Shaft Bank	Luzerne	28,877	21,867	5,298	396	56,438	-	186	5	-	-	-
Hazleton Shaft 1A Bank	Luzerne	10,920	7	-	-	10,927	-	8	4	-	-	-
Hazleton Shaft Breaker	Luzerne	-	-	-	-	-	-	115	87	-	6	-
Hazleton Shaft Cleaning Plant	Luzerne	-	-	-	-	-	-	208	27	-	3	-
Hazleton Shaft Silt Bank	Luzerne	19,643	12	-	-	19,655	-	34	4	-	-	-
Lion Breaker	Luzerne	-	-	-	-	-	-	163	18	-	-	-
Jeanesville Fine Bank	Luzerne	550	496	105	9	1,160	-	12	*	-	-	-
Morea Bank	Schuylkill	23,532	36,132	42,693	605	102,962	-	231	10	-	-	-
Morea Breaker	Schuylkill	-	-	-	-	-	-	231	24	-	8	-
Total		173,328	59,566	49,276	1,027	283,197 p	-	-	199	-	17	-
Maksimik Coal Co.												
Kehley Run Bank	Schuylkill	590	496	695	-	1,781 e	-	50	7	-	-	-
Mazaika Brothers Coal Co.												
Mazaika Breaker	Schuylkill	-	-	-	-	-	-	310	3	-	-	-
McAdoo Mining Co.												
Wharton Slope	Carbon	-	-	-	-	- q	-	31	2	-	-	-
Olman & Company												
Buck Mountain Slope	Schuylkill	-	-	768	-	768 r	450	211	3	-	-	-
Phoenix Contracting Co.												
St. Nicholas Railroad Bank	Schuylkill	1,402	1,051	1,051	-	3,504 s	-	14	3	-	-	-
Pleasant Hill Coal Co.												
Skidmore Drift	Schuylkill	69	26	954	-	1,049 h	500	120	3	-	-	-
Racho, George												
Lattimer Bank	Luzerne	-	12,055	-	-	12,055 t	-	62	8	-	-	-
Reading Anthracite Co.												
Ellangown Bank	Schuylkill	85,376	80	1,809	-	87,265	-	233	14	-	-	-
Maple Hill Cleaning Plant	Schuylkill	-	-	-	-	-	-	110	11	-	-	-
St. Nicholas Slush Bank	Schuylkill	81,303	-	-	-	81,303	-	233	9	-	-	-
St. Nicholas Fine Coal Plant	Schuylkill	-	-	-	-	-	-	233	32	-	4	-
Total		166,679	80	1,809	-	168,568 u	-	66	-	-	4	-
Starwood Coal Corporation												
No. 1 Slope	Schuylkill	77	94	1,235	-	1,406	900	173	7	-	2	-
Starwood Breaker	Schuylkill	-	-	-	-	-	-	301	10	-	-	-
Total		77	94	1,235	-	1,406 v	900	17	-	-	2	-

		District 7 Production - net tons				Pounds	permis-	Pounds	Days	Empl-	Fatal	Non-
		Shipped to market	Sold to	Used at	Total	sible ex-	dynamite	worked	oyes	acci-	fatal	
Operators and Collieries	County	By railroad	By truck	local trade	production	plosives used	used			dents	acci-	
Valley Coal Co.												
Valley Breaker	Schuylkill	-	-	-	-	-	-	62	2	-	-	-
Wesner Coal Co.												
Wesner Breaker	Schuylkill	-	-	-	-	-	-	83	3	-	-	-
White Coal Co.												
Gilberton Bank	Schuylkill	934	1,488	1,208	-	3,630 o	-	59	1	-	-	-
District Total		824,074	179,653	128,894	1,855	1,134,476	10,475	400	181	702	1	38

- NOTE: (a) All coal prepared at B-D Fine Coal Plant.  
 \* Men were transferred to Mahanoy City Bank of Gilberton Coal Co.  
 (b) Slope used for pumping only.  
 (c) All coal prepared at Rosa Breaker.  
 (d) All coal prepared at Candleton Washery.  
 (e) 18,094 tons prepared at Blaschak Breaker  
 1,054 tons prepared at Rosa Breaker  
 (f) New operation - no coal produced during 1969.  
 (g) All coal prepared at Honeybrook Breaker.  
 (h) All coal prepared at Starwood Breaker.  
 (i) Men were transferred to Hard Top Coal Company, District 8.  
 (j) All coal prepared at Eckley Breaker.  
 (k) 1,570 tons prepared at Blaschak Breaker  
 416 tons prepared at Black Heath Breaker - District 12  
 \* Men were transferred to Pleasant Hill Bank  
 (l) All coal prepared at Beaver Brook Washery.  
 (m) All coal prepared at Highland No. 5 Breaker.  
 (n) All coal prepared at Kassa Breaker - District 5.  
 (o) All coal prepared at Blaschak Breaker.
- (p) 119,791 tons prepared at Lion Breaker  
 105,808 tons prepared at Mrea Breaker  
 34,861 tons prepared at Hazleton Shaft Breaker  
 22,737 tons prepared at Jeddo No. 7 Breaker  
 (q) Timbering slope only - no coal produced during 1969.  
 (r) All coal prepared at Mountain Side Breaker - District 12.  
 (s) All coal prepared at Black Heath Breaker - District 12.  
 (t) All coal shipped unprepared to Pennsylvania Power & Light Co.  
 (u) 166,471 tons prepared at St. Nicholas Fine Coal Plant  
 2,097 tons prepared at Starwood Breaker  
 (v) 858 tons prepared at Starwood Breaker  
 548 tons prepared at Mazaika Breaker  
 This mine was formerly operated by Alessi Coal Co. who produced 290 tons, used 150 lbs. explosives, worked 61 days with 4 men; changed to Babel Coal Co. on July 1, 1969 who produced 624 tons, used 450 lbs. of explosives, worked 50 days with 5 men; changed to Angelo Peca Coal Co. on October 1, 1969, who produced 492 tons, used 300 lbs. of explosives, worked 62 days with 7 men; changed name of company to Starwood Coal Corp. on December 1, 1969.

		District 8				Pounds	permis-	Pounds	Days	Empl-	Fatal	Non-
		Shipped to market	Sold to	Used at	Total	sible ex-	dynamite	worked	oyes	acci-	fatal	
Operators and Collieries	County	By railroad	By truck	local trade	production	plosives used	used			dents	acci-	
A. D. G. Coal Co.												
Buck Mountain Slope	Columbia	501	-	3,349	-	3,850 a	1,350	281	4	-	-	-
Botella Coal Co., James Packer No. 3 Bank	Schuylkill	12,784	20,159	16,226	-	49,169 b	-	190	3	-	-	-
Burnrite Coal Co.												
No. 2 Iykens Vein Slope	Columbia	-	10,500	-	-	10,500 c	2,000	275	5	-	-	-
Capparell Stripping & Construction Co. Packer No. 5 Bank	Schuylkill	133	116	166	-	415 d *	-	8	5	-	-	-

		District 8 Production - net tons				Pounds	Pounds	Days	Empl-	Fatal	Non-
Operators and Collieries		Shipped to market		Sold	Used at	permis-	dynamite	worked	acci-	fatal	
County	By	By	to	local	colliery	sible ex-	used		idents	accidents	
	railroad	truck	trade	for steam	and heat	plosives					
				production:		used					
D. R. Z. Coal Co.											
No. 5 Vein Slope	North'd	-	325	139	-	464 e	400	-	67	2	-
Dyzel Brothers Coal Co.	Schuylkill	333	394	773	15	1,515 f *	300	-	203	3	-
Buck Mountain Slope											
Gangloff Brothers											
Richards Bank	North'd	-	246,000	-	-	246,000 g	-	-	258	3	-
Hanks Coal Co.											
No. 2 Lykens Vein Slope	North'd	240	-	841	11	1,092 h	600	-	72	2	-
Hard Top Coal Co.											
Buck Mountain Slope	Schuylkill	115	1,328	1,662	-	3,105 i	1,200	-	115	3	-
K. & C. Coal Co.											
Buck Mountain Slope	Schuylkill	27	31	62	1	121 f	50	-	75	3	-
K. & M. Excavating Co.											
Luke Fidler Bank	North'd	337	-	1,402	36	1,775 j*	-	-	37	4	-
Kaleta Brothers Coal Co.											
No. 8 & 9 Vein Slope	North'd	-	1,680	720	-	2,400 e	800	100	180	2	-
Lehigh Valley Anthracite, Inc.											
Mammoth Breaker	Schuylkill	-	-	-	-	-	-	-	200	77	-
M. & J. Coal Co.											
Centralia Bank	Columbia	42	765	53	-	860 k *	-	-	61	2	-
M. & S. Coal Co.											
Holmes Slope	Columbia	-	2,433	1,043	-	3,476 e	1,200	-	216	4	-
Marion Mining Co., Inc.											
Comerton Drift	Schuylkill	8,675	13,680	11,010	-	33,365	2,400	10,800	217	22	1
Cleaning Plant	Schuylkill	-	-	-	-	-	-	-	217	1	-
Total		8,675	13,680	11,010	-	33,365 b	2,400	10,800	217	23	1
Mickey Coal Co.											
Diamond Vein Slope	Schuylkill	423	211	2,386	-	3,020 l	1,400	-	222	5	-
Morack Coal Co.											
Buck Mountain Slope	Columbia	-	-	-	-	- #	-	-	60	1	-
Folcovich Coal Co.											
Seven Foot Vein Slope	Columbia	4,240	1,664	3,612	24	9,540 m	1,200	1,800	232	8	-
Poponiak Brothers Coal Co.											
No. 6 & 7 Vein Slope	North'd	162	-	1,082	-	1,244 a	635	-	173	3	-
Ron Lee Coal Co.											
Acme Bank	North'd	809	-	5,417	-	6,226 a *	-	-	117	2	-
S. & D. Coal Co.											
No. 2 Rock Slope	North'd	-	-	-	-	- #	-	-	101	3	-
State Coal Co., Inc.											
State Breaker	North'd	-	-	-	-	-	-	-	223	35	-
Natalie Bank	North'd	3,012	3,518	393	-	6,923	-	-	20	10	-

		District 8 Production - net tons				Pounds	Pounds	Days	Empl-	Fatal	Non-
Operators and Collieries		Shipped to market		Sold	Used at	permis-	dynamite	worked	acci-	fatal	
County	By	By	to	local	colliery	sible ex-	used		idents	accidents	
	railroad	truck	trade	for steam	and heat	plosives					
				production:		used					
State Coal Co., Inc. (Continued)											
Sayre Bank	North'd	10,681	12,475	1,387	-	24,543 *	-	-	109	18	-
Total		13,693	15,993	1,780	-	31,466 n	-	-	63	-	9
Sun Coal Co., Inc.											
Diamond Breaker	North'd	-	-	-	-	-	-	-	291	17	7
Swamp Coal Co.											
No. 9 1/2 Vein Slope	North'd	-	762	326	-	1,088 e	500	-	136	4	-
White Birch Coal Co.											
Buck Mountain Slope	Schuylkill	-	-	-	-	- #	-	-	48	2	-
White Coal Co.											
Diamond Vein Slope	Schuylkill	63	32	359	-	454 l	250	-	92	3	-
Zukus Coal Co.											
No. 4 Vein Slope	North'd	-	420	180	-	600 e	350	-	62	3	-
District Total		42,577	316,493	52,588	87	411,745	14,635	12,700	183	259	1

- NOTE: (a) All coal prepared at Split Vein Breaker - District 11.  
 (b) All coal prepared at Blaschak Breaker - District 7.  
 (c) All coal shipped direct to Merck Chemical Co., Danville, Pa.  
 (d) All coal prepared at Rosa Breaker - District 7.  
 (e) All coal prepared at Swift Breaker - District 11.  
 (f) All coal prepared at Reichwein & Beury Breaker - District 9.  
 (g) All coal shipped direct to Pennsylvania Power & Light Co.  
 (h) All coal prepared at Hoover Breaker - District 11.  
 (i) 1,280 tons prepared at Starwood Breaker - District 7  
 1,825 tons prepared at Swift Breaker - District 11  
 (j) All coal prepared at Diminick Breaker - District 11.  
 (k) 700 tons prepared at Ace Breaker - District 11  
 160 tons prepared at Blaschak Breaker - District 7  
 (l) All coal prepared at Malho Breaker - District 9.  
 (m) 6,185 tons prepared at Mammoth Breaker - District 8  
 3,355 tons prepared at Split Vein Breaker - District 11  
 (n) All coal prepared at State Breaker - District 8.  
 # No production  
 \* Suspended operations during 1969

		District 9				Pounds	Pounds	Days	Empl-	Fatal	Non-
Operators and Collieries		Shipped to market		Sold	Used at	permis-	dynamite	worked	acci-	fatal	
County	By	By	to	local	colliery	sible ex-	used		idents	accidents	
	railroad	truck	trade	for steam	and heat	plosives					
				production:		used					
Al-Mar Coal Co.											
No. 2 Slope	North'd	-	3,264	1,399	-	4,663 a	6,100	-	312	5	-
Ashland Community Enterprises											
Pioneer Tunnel	Schuylkill	-	-	-	-	- b	-	-	303	6	-
B. & B. Coal Co.											
No. 9 Vein Slope	North'd	-	655	-	-	655 c	400	-	123	3	-
B. & S. Coal Co.											
Primrose Slope	North'd	118	2,795	406	-	3,319 d	2,200	-	189	4	-
C. & P. Coal Co.											
Merriam Slope	Columbia	2,976	1,296	528	-	4,800 e	7,500	-	301	7	-

		District 9 Production - net tons										
Operators and Collieries	County	Shipped to market		Sold to		Total production	Pounds permissible explosives used	Pounds dynamite used	Days worked	Empl- oyes	Fatal acci- dents	Non- fatal acci- dents
		By railroad	By truck	local trade	colliery for steam and heat							
Corynham Contracting Co.												
Reliance Bank	North'd	1,843	64	893	96	2,896 f	-	-	40	6)	-	-
Locust Gap Bank #63	North'd	4,167	-	2,155	89	6,411 g	-	-	71	)	-	-
Total		6,010	64	3,048	185	9,307	-	-		6	-	-
Emnis Coal Co.												
Locust Run Slope	Columbia	1,045	454	185	-	1,684 e	3,720	-	281	3	-	-
G. M. P. Coal Co.												
Mammoth Slope	North'd	1,158	1,567	15,807	329	18,861 h	1,700	-	240	20	-	-
Gangloff Brothers												
Scott Bank	North'd	-	184,000	-	-	184,000 i	-	-	189	3	-	-
Kerrigan, Paul												
Kerrigan Table Plant	Schuylkill	-	-	-	-	-	-	-	49	4)	-	-
Millersville Bank	Schuylkill	1,361	-	-	-	1,361	-	-	46	)	-	-
Total		1,361	-	-	-	1,361 j	-	-		4	-	-
Lone Pine Coal Co.												
No. 4 Vein Slope	North'd	-	3,725	-	-	3,725 c	700	-	258	3	-	-
Malho Coal Co.												
Malho Breaker	Schuylkill	-	-	-	-	-	-	-	303	4	-	-
R. & L. Coal Co.												
Germantown Slope	Columbia	463	201	82	-	746 g	2,300	-	99	4	-	1
Ranshaw Transportation & Auto Wreckers Co.												
Locust Gap Bank	North'd	-	1,500	-	-	1,500 k	-	-	22	6	-	-
Reading Anthracite Co.												
Locust Summit Breaker	North'd	-	-	-	-	- l	-	-	235	4	-	-
Merriam No. 1 A Silt Bank	North'd	7,373	2,033	4,451	17	13,874 m	-	-	174	5	-	-
Locust Gap Silt Bank No. 12	North'd	10,485	2,391	5,518	-	18,394 n	-	-	72	5	-	-
Total		17,858	4,424	9,969	17	32,268	-	-		14	-	-
Reichwein & Beury Coal Co.												
Reichwein & Beury Breaker	Schuylkill	-	-	-	-	-	-	-	263	3	-	-
Sanders Coal Co.												
No. 9 Vein Slope	North'd	-	1,918	-	-	1,918 c	850	-	223	4	-	-
Savitski Brothers Coal Sales												
Savitski Breaker	North'd	-	-	-	-	-	-	-	254	6	-	-
No. 1 Shaft	North'd	-	-	-	-	- o	-	-	254	1	-	-
Total		-	-	-	-	-	-	-		7	-	-
Scott Coal Co.												
No. 7 Vein Slope	Columbia	1,142	505	962	-	2,609 p	3,700	-	256	3	-	-
State Coal Co., Inc.												
Locust Gap Bank	North'd	12,588	21,484	1,532	-	35,604	-	-	42	10)	-	-
Excelsior Bank	North'd	18,182	6,732	834	-	25,748	-	-	48	)	-	-
Total		30,770	28,216	2,366	-	61,352 q	-	-		10	-	-

		District 9 Production - net tons										
Operators and Collieries	County	Shipped to market		Sold to		Total production	Pounds permissible explosives used	Pounds dynamite used	Days worked	Empl- oyes	Fatal acci- dents	Non- fatal acci- dents
		By railroad	By truck	local trade	colliery for steam and heat							
Zanella Brothers Coal Co.	North'd	537	1,455	-	-	1,992 r	2,450	-	239	6	-	-
Primrose Slope												
District Total		63,438	236,039	34,752	531	334,760	31,620	-	200	125	-	1

- NOTE: (a) All coal prepared at Swift Breaker - District 11.  
 (b) Conducted mine tour and maintenance only.  
 (c) All coal prepared at D. & Z. Breaker - District 11.  
 (d) 1,354 tons prepared at Swift Breaker - District 11  
 1,965 tons prepared at Reidinger Breaker - District 11  
 (e) All coal prepared at Mammoth Breaker - District 8.  
 (f) 493 tons prepared at New St. Nicholas Breaker - District 12  
 2,403 tons prepared at Diamond Breaker - District 8  
 (g) All coal prepared at Diamond Breaker - District 8.  
 (h) 3,518 tons prepared at Blaschak Breaker - District 7  
 1,718 tons prepared at Malho Breaker  
 7,864 tons prepared at Bar Mac Breaker - District 11  
 5,751 tons prepared at G. M. P. Breaker - District 11  
 (j) All coal prepared at Kerrigan Table Plant.  
 (k) All coal prepared at Ranshaw Washery - District 10.  
 (l) Bagging and loading coal prepared at other breakers.  
 (m) 4,400 tons prepared at Diamond Breaker - District 8  
 6,610 tons prepared at New St. Nicholas Breaker - Dist. 12  
 2,864 tons prepared at Blaschak Breaker - District 7  
 (n) All coal prepared at New St. Nicholas Breaker - Dist. 12  
 Pumping only  
 (o) 992 tons prepared at Malho Breaker  
 1,617 tons prepared at Mammoth Breaker - District 8  
 (q) All coal prepared at State Breaker - District 8.  
 (r) All coal prepared at Reidinger Breaker - District 11.

		District 10										
Operators and Collieries	County	Shipped to market		Sold to		Total production	Pounds permissible explosives used	Pounds dynamite used	Days worked	Empl- oyes	Fatal acci- dents	Non- fatal acci- dents
		By railroad	By truck	local trade	colliery for steam and heat							
Alarcon Coal Co.	North'd	142	12,532	1,566	-	14,240 a	15,000	-	285	8	-	-
No. 3 Slope												
B. & B. Coal Co.	North'd	370	5,180	1,850	1	7,401 b	1,750	675	266	4	-	-
No. 2 Slope												
Bell Coal Co.	North'd	250	3,625	1,294	1	5,170 b	3,275	-	245	3	-	-
No. 4 Slope												
Chestnut Coal Co.												
No. 5 Vein Rock Slope	North'd	-	-	450	-	450 c	200	-	112	3	-	-
Clay Coal Co.												
No. 9/2 Vein Slope	North'd	-	798	343	-	1,141 d	800	-	185	3	-	-
D. & S. Coal Co.												
Zero Vein Slope	North'd	-	7,949	-	-	7,949 e	700	-	278	4	-	-
Duke Associates												
No. 4 Rock Slope	North'd	-	3,101	1,330	-	4,431 f	3,250	-	235	3	-	-
Duke Mining Co.												
No. 5 Rock Slope	North'd	-	6,916	2,964	-	9,880 f	6,850	-	235	5	-	-
Four Partners Coal Co.												
No. 9/2 Vein Slope	North'd	-	1,634	696	-	2,330 f *	800	-	236	5	-	-







		District 12				Pounds			Non-			
		Production - net tons				permis-			fatal			
Operators and Collieries	County	Shipped to market		Sold	Used at	Total	sible ex-	Pounds dynamite used	Days worked	Empl- oves	Fatal acci- dents	fatal acci- dents
		By railroad	By truck	to local trade	to colliery for steam and heat							
Zakrewsky Coal Co.	Schuylkill	-	49	607	1	657	400	-	190	9)	-	-
Buck Mountain Slope	Schuylkill	-	374	748	11	1,133 *	600	200	47	)	-	-
Holmes Slope	Schuylkill	-	3,653	5,084	66	8,803 *	2,500	500	95	)	-	-
Leader Slope	Schuylkill	-	4,076	5,439	78	10,593 aa	3,500	700	9	)	-	-
<b>Total</b>												
<b>District Total</b>		208,872	197,208	104,674	252	511,006	52,130	4,200	169	506	1	24

- NOTE: (a) 318 tons prepared at South Tamaqua Breaker  
 25 tons prepared at Malho Breaker - District 9  
 779 tons prepared at Split Vein Breaker - District 11  
 809 tons prepared at Swift Breaker - District 11  
 45 tons prepared at Valley Breaker - District 7  
 Began operations in October, 1969. Coal stored on property.  
 (b) 719 tons prepared at Bernitsky Breaker  
 351 tons prepared at Glenn Worth Breaker - District 13  
 (d) All coal prepared at Bernitsky Breaker.  
 (e) 860 tons prepared at K. & P. Breaker  
 1,821 tons prepared at Minersville Breaker - District 13  
 616 tons prepared at Starwood Breaker - District 7  
 21 tons prepared at Valley Breaker - District 7  
 (f) All coal prepared at Honeybrook Breaker - District 7.  
 (g) All coal prepared at Mazaika Breaker - District 7.  
 (h) 2,648 tons prepared at Live Oak Breaker - District 13  
 694 tons prepared at Minersville Breaker - District 13  
 67 tons prepared at Olenick Breaker - District 13  
 (i) Operation is bein rehabilitated.  
 (j) All coal prepared at Incanna Fine Coal Plant.  
 (k) 9,563 tons prepared at Marlin Breaker  
 9,723 tons prepared at Blaschak Breaker - District 7  
 (l) 12,390 tons prepared at K. & P. Breaker  
 1,142 tons prepared at Silver Creek Breaker  
 470 tons prepared at Glenn Worth Breaker - District 13  
 \* Ceased operations during 1969
- (m) All coal prepared at Greenwood Breaker.  
 (n) 31,338 tons prepared at Lowland Washery  
 71,000 tons prepared at No. 6 Washery  
 (o) All coal prepared at Live Oak Breaker - District 13.  
 (p) 37 tons prepared at Bernitsky Breaker  
 100 tons prepared at K. & P. Breaker  
 (q) 32,477 tons prepared at Black Heath Breaker  
 254 tons prepared at Blaschak Breaker - District 7  
 (r) All coal prepared at Premium Fine Coal Plant  
 (s) All coal prepared at Randolph Washery.  
 (t) All coal prepared at New St. Nicholas Fine Coal Plant.  
 (u) 12 tons prepared at Mountain Side Breaker  
 70 tons prepared at Silver Creek Breaker  
 65 tons prepared at South Tamaqua Breaker  
 (v) All coal prepared at Silver Creek Breaker.  
 (w) All coal prepared at Blaschak Breaker - District 7.  
 (x) 74 tons prepared at Olenick Breaker - District 13.  
 2,822 tons prepared at Schneck Breaker - District 11  
 (y) 602 tons prepared at Bernitsky Breaker  
 492 tons prepared at Silver Creek Breaker  
 2,680 tons prepared at Wesner Breaker - District 7  
 (z) 2,110 tons prepared at South Tamaqua Breaker  
 2,998 tons prepared at Mazaika Breaker - District 7  
 (aa) 846 tons prepared at Mountain Side Breaker  
 7,919 tons prepared at South Tamaqua Breaker  
 1,828 tons prepared at Brockton Breaker

		District 13				Pounds			Non-			
		Production - net tons				permis-			fatal			
Operators and Collieries	County	Shipped to market		Sold	Used at	Total	sible ex-	Pounds dynamite used	Days worked	Empl- oves	Fatal acci- dents	fatal acci- dents
		By railroad	By truck	to local trade	to colliery for steam and heat							
Blue Bell Enterprises, Inc. No. 1 Bank	Schuylkill	452	370	-	-	822 a	-	-	42	2	-	-

		District 13				Pounds			Non-			
		Production - net tons				permis-			fatal			
Operators and Collieries	County	Shipped to market		Sold	Used at	Total	sible ex-	Pounds dynamite used	Days worked	Empl- oves	Fatal acci- dents	fatal acci- dents
		By railroad	By truck	to local trade	to colliery for steam and heat							
Bosack Coal Co. No. 2 Drift Tunnel	Schuylkill	453	1,002	1,778	-	3,233 b	4,800	-	250	4	-	-
C. L.M. Coal Co. Phoenix Park Refuse Bank	Schuylkill	506	24,059	760	-	25,325 c	-	-	182	3	-	-
C. L. S. Coal Co. Maple Springs Breaker	Schuylkill	-	-	-	-	-	-	-	242	8	-	-
Branch Refuse Bank	Schuylkill	2	88	3	-	93	-	-	1	3	-	-
<b>Total</b>		2	88	3	-	93 c	-	-	11	-	-	-
Coxe Coal Co. Woods Drift	Schuylkill	5	406	4,421	49	4,881 d	1,700	700	197	4	-	-
Dando Coal Co., F. P. No. 12 Rock Slope	Schuylkill	725	2,673	1,087	45	4,530 e	1,600	-	243	6	-	-
Dembinsky Coal Co. No. 3 Slope	Schuylkill	-	-	-	-	- f	-	-	95	3	-	-
DiRenzo Coal Co. DiRenzo Breaker	Schuylkill	-	-	-	-	-	-	-	249	8	-	-
Glenn Worth Coal Co. Glenn Worth Breaker	Schuylkill	-	-	-	-	-	-	-	171	3	-	-
H. & M. Coal Co. Selkirk Slope	Schuylkill	-	746	73	-	819 g	200	-	78	3	-	-
Haas Coal Co. No. 2 Slope	Schuylkill	-	284	201	5	490 h	300	-	50	3	-	-
Hegins Mining Co. Hillside Breaker	Schuylkill	-	-	-	-	-	-	-	304	6	-	-
Sharp Mountain Slope	Schuylkill	-	6,363	4,498	108	10,969	9,550	600	307	8	-	6
No. 2 Slope	Schuylkill	-	378	257	7	652	2,800	450	188	5	-	-
<b>Total</b>		-	6,741	4,755	115	11,621 i	12,350	1,050	19	-	-	6
K. & M. Coal Co. Westwood Slope	Schuylkill	155	1,011	1,011	22	2,199 j	1,400	2,600	240	5	-	-
K. S. F. Coal Co. K. S. F. Slope	Schuylkill	4,095	16,281	3,376	151	23,903 k	36,350	-	313	10	-	-
Keim Coal Co., Ralph Otto Bank	Schuylkill	27,562	7,934	5,846	418	41,760 l	-	-	243	7	-	-
Klinger Coal Co. No. 1 Slope	Schuylkill	208	1,585	1,222	24	3,039 m	2,050	-	249	3	-	-
Live Oak Coal Co. Live Oak Breaker	Schuylkill	-	-	-	-	-	-	-	185	3	-	-
M. & N. Coal Co. Middle Split Slope	Schuylkill	256	945	384	16	1,601	450	-	148	4	-	1
Peach Mountain Slope	Schuylkill	-	-	-	-	- n	-	-	3	5	-	-
<b>Total</b>		256	945	384	16	1,601 e	450	-	9	-	-	1



		District 13 Production - net tons				Pounds				Non-		
Operators and Collieries	County	Shipped to market		Sold to local trade	Used at colliery for steam and heat	Total production	permissible explosives used	Pounds dynamite used	Days worked	Empl-oyes	Fatal acci-dents	fatal acci-dents
		By railroad	By truck									
Minersville Coal Co. Minersville Breaker	Schuylkill	-	-	-	-	-	-	-	287	5	-	-
Old Mill Coal Yard Old Mill Breaker	Schuylkill	-	-	-	-	-	-	-	263	2	-	-
Old Mill Silt Dam Bank	Schuylkill	570	467	-	-	1,037	-	-	45	1	-	-
Total		570	467	-	-	1,037 a	-	-		3	-	-
Olenick Brothers Coal Co. Olenick Breaker	Schuylkill	-	-	-	-	-	-	-	240	4	-	-
Olenick Silt Dam Bank	Schuylkill	639	511	121	6	1,277	-	-	240	1	-	-
Total		639	511	121	6	1,277 o	-	-		5	-	-
P. & H. Coal Co. White Ash Slope	Schuylkill	492	1,814	738	31	3,075 e	1,500	-	222	5	-	-
Reading Anthracite Co. Oak Hill Refuse Bank No. 235	Schuylkill	2,375	436	1,148	-	3,959 p	-	-	9	2	-	-
Reichwein & Beury Coal Co. R. & B. Slope	Schuylkill	6,225	5,029	1,455	66	12,775 q	20,800	-	303	8	-	-
S. & B. Coal Co. S. & B. Drift Tunnel	Schuylkill	-	830	2,245	-	3,075 r	400	325	182	3	-	-
S. & F. Coal Co. Primrose Slope	Schuylkill	239	4,086	2,857	-	7,182 s	10,000	2,500	191	5	-	-
S. & M. Coal Co. No. 2 Slope	Schuylkill	2,036	2,086	6,954	97	11,173 t	8,000	-	297	6	-	-
Scott Coal Co. Buck Slope	Schuylkill	19	124	124	2	269 u	150	-	74	3	-	-
Schuylkill Contracting Co. Buck Run Slush Bank	Schuylkill	10,009	42,668	-	-	52,677 v	-	-	166	6	-	-
Seanawatis Brothers Coal Co. Bottom Split Slope	Schuylkill	994	3,664	1,490	62	6,210 e	3,500	8,700	246	5	-	-
Siminitus Coal Co. Four Foot Slope	Schuylkill	-	-	-	-	- g	-	-	33	3	-	-
Snyder Coal Co., Leroy No. 2 Buck Mountain Slope	Schuylkill	166	397	2,961	29	3,553 w	293	-	294	8	-	-
Sorokach Coal Co. Sorokach Slope	Schuylkill	18	114	114	2	248 v	150	-	64	3	-	-
Studlack Coal Co. Studlack Slope	Schuylkill	-	592	291	-	883 w	200	-	39	3	-	-
Swatara Coal Co. Swatara Breaker	Schuylkill	-	-	-	-	-	-	-	263	28	-	3
Tokarchek Coal Co. Tokarchek Slope	Schuylkill	495	1,824	742	31	3,092 u	1,100	800	352	3	-	-

		District 13 Production - net tons				Pounds				Non-		
Operators and Collieries	County	Shipped to market		Sold to local trade	Used at colliery for steam and heat	Total production	permissible explosives used	Pounds dynamite used	Days worked	Empl-oyes	Fatal acci-dents	fatal acci-dents
		By railroad	By truck									
Walaitis Coal Co. No. 2 & 3 Slopes	Schuylkill	106	106	212	-	424 x	550	-	152	3	-	-
West West Coal Co. Woodside Tunnel	Schuylkill	414	2,717	2,717	59	5,907 u	6,000	200	254	6	-	-
Winne Land Co. Lytle Washery	Schuylkill	-	-	-	-	-	-	-	212	9	-	3
Woodside Mining Co. Buck Mountain Slope	Schuylkill	-	-	-	-	- f	-	-	48	2	-	-
Woratyla Coal Co. Mammoth Slope	Schuylkill	2,616	3,888	1,923	80	8,507 y	3,100	-	253	8	-	-
District Total		61,832	135,478	51,019	1,310	249,639	116,934	16,875	218	238	-	13

- NOTE: (a) All coal prepared at Tremont Breaker - District 15.  
 (b) All coal prepared at K. & P. Breaker  
 (c) All coal prepared at Maple Spring Breaker  
 (d) 4,851 tons prepared at DiRenzo Breaker  
 30 tons prepared at Olenick Breaker  
 (e) All coal prepared at Olenick Breaker.  
 (f) Maintenance work only.  
 (g) 243 tons prepared at Swift Breaker - District 11  
 576 tons prepared at D. & Z. Breaker - District 11  
 (h) 543 tons prepared at Old Mill Breaker  
 490 tons prepared at Hillside Breaker  
 (i) All coal prepared at Hillside Breaker.  
 (j) 531 tons prepared at Minersville Breaker  
 1,668 tons prepared at Olenick Breaker  
 (k) 6,732 tons prepared at Kocher Breaker - District 15  
 14,574 tons prepared at Franklin Breaker - District 14  
 2,597 tons prepared at Hillside Breaker  
 (l) All coal prepared at Swatara Breaker.  
 (m) 2,049 tons prepared at Hillside Breaker  
 437 tons prepared at Olenick Breaker  
 553 tons prepared at Old Mill Breaker  
 (n) Peach Mountain Slope ceased operating in February, 1969.  
 (o) All coal prepared at Kocher Breaker - District 15.  
 (p) All coal prepared at New St. Nicholas Breaker - District 12  
 (q) 580 tons prepared at R. & B. Breaker - District 9  
 12,195 tons prepared at Kocher Breaker - District 15  
 (r) All coal prepared at Glenn Worth Breaker.  
 (s) 809 tons prepared at Glenn Worth Breaker  
 5,417 tons prepared at Live Oak Breaker  
 956 tons prepared at Old Mill Breaker  
 (t) 3,085 tons prepared at Swatara Breaker  
 6,641 tons prepared at DiRenzo Breaker  
 1,447 tons prepared at Live Oak Breaker  
 (u) All coal prepared at Minersville Breaker.  
 Ceased operating in May, 1969.  
 (v) All coal prepared at Lytle Washery.  
 (w) All coal prepared at Live Oak Breaker.  
 (x) All coal prepared at Old Mill Breaker.  
 (y) 5,608 tons prepared at Olenick Breaker  
 2,426 tons prepared at Swatara Breaker  
 473 tons prepared at Old Mill Breaker

		District 14				Pounds				Non-		
Operators and Collieries	County	Shipped to market		Sold to local trade	Used at colliery for steam and heat	Total production	permissible explosives used	Pounds dynamite used	Days worked	Empl-oyes	Fatal acci-dents	fatal acci-dents
		By railroad	By truck									
B. & C. Coal Co. L.V. No. 3 Vein Slope	Schuylkill	675	2,390	307	3	3,375 a	1,460	-	173	3	-	-
B. & F. Coal Co. Buck Mountain Slope	Schuylkill	152	197	92	3	444 b	1,200	-	146	3	-	-

		District 14 Production - net tons				Total production:	Pounds permis- sible ex- plosives used	Pounds dynamite used	Days worked	Empl- oves	Fatal acci- dents	Non- fatal acci- dents
Operators and Collieries	County	Shipped to market By : railroad	Sold to : local trade	Used at colliery for steam and heat								
Blue Bell Enterprises, Inc.	Schuylkill	2,168	1,802	-	3,970	-	-	87	2	-	-	
Kemble Bank	Schuylkill	229	190	-	419	-	-	14	2	-	-	
Schneck Bank	Schuylkill	891	740	-	1,631	-	-	46	2	-	-	
Rausch Creek Bank	Schuylkill	-	-	-	-	-	-	-	-	-	-	
Total		3,288	2,732	-	6,020 c	-	-	-	6	-	-	
Colket Coal Co.	Schuylkill	222	4,637	670	5,540 d	5,200	-	258	3	-	-	
No. 2 & 3 Slopes												
Faust Coal Co.	Schuylkill	42	370	46	459	450	-	110	2	-	-	
Faust Slope												
Tracy Slope	Schuylkill	252	707	59	1,018	750	-	108	3	-	-	
Orchard Slope	Schuylkill	29	91	6	126	100	-	55	2	-	-	
Total		323	1,168	111	1,603 e	1,300	-	-	7	-	-	
Franklin Coal Co.	Schuylkill	-	-	-	-	-	-	258	9	-	-	
Franklin Hydrated Breaker												
H. & S. Coal Co.	Schuylkill	317	6,632	959	7,924 d	7,800	-	270	4	-	-	
No. 1 Slope												
Hatter Coal Co.	Schuylkill	4,661	16,499	2,120	23,303 a	22,500	-	298	10	-	1	
No. 1 Slope												
Hegins Mining Co.	Schuylkill	-	12,805	9,051	22,077 f	18,650	1,000	304	16	-	4	
No. 5 West Slope												
Herring Brothers Coal Co.	Schuylkill	1,061	3,232	158	4,464 g	3,800	200	234	6	-	2	
Herring Slope												
Industrial Coal Sales Co.	Schuylkill	-	-	-	-	-	-	210	12	-	2	
Donaldson Breaker												
Donaldson Bank	Schuylkill	359	1,122	78	1,559	-	-	8	2	-	-	
Total		359	1,122	78	1,559 h	-	-	-	11	-	2	
L. E. H. Coal Co.	Schuylkill	-	4,107	2,903	7,081 f	7,000	-	251	5	-	-	
L. E. H. Slope												
Mercury Coal Co., Inc.	Schuylkill	16,873	13,499	3,206	33,747 i	26,050	-	302	20	-	9	
No. 4 Slope												
Miller Coal Co.	Schuylkill	-	-	-	- *	-	-	152	2	-	-	
Miller Slope												
Mountain Top Coal Co.	Schuylkill	60	60	121	241 j	700	-	134	3	-	-	
Orchard Slope												
Neumeister Coal Co., James	Schuylkill	1,007	1,763	6,301	9,071 k	8,800	-	235	6	-	-	
No. 1 Slope												
Oakwood Coal Co.	Schuylkill	-	-	-	-	-	-	304	9	-	-	
Oakwood Breaker												
Remlinger Coal Co.	Schuylkill	1,381	1,253	2,439	5,076 l	5,800	-	263	6	-	-	
Buck Mountain Slope												
S. B. K. Coal Co.	Schuylkill	220	804	3,314	4,375 m	1,500	-	232	4	1	-	
Buck Mountain Slope												

		District 14 Production - net tons				Total production:	Pounds permis- sible ex- plosives used	Pounds dynamite used	Days worked	Empl- oves	Fatal acci- dents	Non- fatal acci- dents
Operators and Collieries	County	Shipped to market By : railroad	Sold to : local trade	Used at colliery for steam and heat								
Schneck Coal Co., Thomas W.	Schuylkill	-	-	-	-	-	-	320	10	-	-	
Schneck Breaker												
Schwartzlander Coal Co.	Schuylkill	131	5,011	115	5,259 n	3,000	-	177	3	-	1	
No. 1 Slope												
Three Far Coal Co.	Schuylkill	248	604	24	878 o	750	-	101	3	-	-	
Top Split Slope												
Tobin Coal Co.	Schuylkill	10	203	29	242 d	350	-	175	3	-	-	
Little Buck Mountain Slope												
District Total		30,988	78,718	31,998	142,279	115,860	1,200	239	155	1	19	

- NOTE: (a) All coal prepared at Superior Breaker - District 16. Mine ceased operations in October, 1969.
- (b) 274 tons prepared at Olenick Breaker - District 13  
163 tons prepared at Swatara Breaker - District 13  
7 tons prepared at Old Mill Breaker - District 13
- (c) All coal prepared at Tremont Breaker - District 15.
- (d) All coal prepared at Oakwood Breaker.
- (e) 354 tons prepared at Franklin Breaker  
1,109 tons prepared at Donaldson Breaker  
66 tons prepared at Kochoer Breaker - District 15  
74 tons prepared at Pine Creek Breaker - District 16
- (f) All coal prepared at Hillside Breaker - District 13.
- (g) 3,159 tons prepared at Schneck Breaker  
1,287 tons prepared at Oakwood Breaker  
18 tons prepared at Kochoer Breaker - District 15
- (h) All coal prepared at Donaldson Breaker
- (i) All coal prepared at Kochoer Breaker - District 15.
- (j) All coal prepared at Old Mill Breaker - District 13.
- (k) 7,190 tons prepared at Malho Breaker - District 9  
1,881 tons prepared at Live Oak Breaker - District 13
- (l) 273 tons prepared at Swatara Breaker - District 13  
4,803 tons prepared at Old Mill Breaker - District 13
- (m) 3,255 tons prepared at Underkoffler Breaker - District 16  
176 tons prepared at Kochoer Breaker - District 15  
441 tons prepared at Legal Breaker - District 15  
482 tons prepared at Superior Breaker - District 16  
21 tons prepared at Oakwood Breaker
- (n) 754 tons prepared at Oakwood Breaker  
397 tons prepared at Donaldson Breaker  
49 tons prepared at Superior Breaker - District 16  
4,059 tons sold to market unprepared at Frank's Ramp-Dist.16
- (o) 614 tons prepared at Schneck Breaker  
264 tons prepared at Superior Breaker - District 16
- \* No production - Maintained as pump slope by Hatter Coal Co. No. 1 Slope.

		District 15				Total production:	Pounds permis- sible ex- plosives used	Pounds dynamite used	Days worked	Empl- oves	Fatal acci- dents	Non- fatal acci- dents
Operators and Collieries	County	Shipped to market By : railroad	Sold to : local trade	Used at colliery for steam and heat								
B. & H. Coal Co.	Schuylkill	8	161	23	194 a	100	-	66	3	-	-	
Bottom Split Slope												
Blue Bell Enterprises, Inc.	Schuylkill	-	-	-	-	-	-	242	4	-	-	
Tremont Breaker												
Blackwood Bank	Schuylkill	757	630	-	1,387	-	-	38	2	-	-	
Total		757	630	-	1,387 b	-	-	-	6	-	-	
Bush Coal Co.	Schuylkill	1,961	12,570	31,375	46,288 c	23,500	-	231	22	1	-	
Top Split Slope												





		District 16 Production - net tons				Pounds perm- sible ex-		Pounds dynamite used		Days worked		Fatal acci- dents		Non- fatal acci- dents	
Operators and Collieries	County	Shipped to market		Sold	Used at	Total production	sible ex- plosives used	dynamite used	Days worked	Empl- oves	Fatal acci- dents	Non- fatal acci- dents			
		By railroad	By truck	to local trade	to colliery for steam and heat										
Lehman Coal Co., Mervin L. V. No. 6 Vein Slope	Schuylkill	16	326	46	1	389 i	175	-	44	3	-	-			
Lucas Coal Co., Franklin White's Vein Slope	Schuylkill	1,421	3,345	619	12	5,397 n	5,000	-	243	4	-	1			
M. A. D. Coal Co. L. V. No. 6 Vein Slope	Schuylkill	113	179	148	1	441 a	350	-	90	3	-	-			
Mace Coal Co., James White's Vein Slope	Schuylkill	3,700	6,161	3,770	13	13,644 p	7,400	200	244	10	-	2			
Marby Coal Co., Inc. Middle Split Slope	Schuylkill	1,653	5,084	265	-	7,002 q	5,600	350	264	11	-	2			
Marchuk & Sons Coal Co. No. 9 Vein Slope	Dauphin	-	30	-	-	30 r	50	50	95	2	-	-			
Meadowbrook Coal Co. Meadowbrook Bank	Dauphin	-	12,900	-	-	12,900	-	-	242	3	-	-			
Meadowbrook Washery Total	Dauphin	-	12,900	-	-	12,900 s	-	-	242	4	-	-			
No. 4 Coal Co. White's Vein Slope	Schuylkill	1,864	4,413	773	16	7,066 t	1,200	-	253	4	-	-			
Pine Creek Coal Co. Pine Creek Breaker	Schuylkill	-	-	-	-	-	-	-	286	15	-	-			
Reiner Coal Co. No. 9/2 Vein Slope	Dauphin	610	2,160	278	3	3,051 h	1,600	-	229	3	-	-			
S. & K. Coal Co. Buck Mountain Slope	Dauphin	907	2,600	465	8	3,980 u	2,500	50	250	3	-	-			
S. & T. Coal Co. Skidmore Slope	Dauphin	775	2,301	280	15	3,371 v	2,800	50	225	4	-	-			
Shomper Coal Co. L.V. No. 6 Vein No. 1 Slope	Schuylkill	315	645	774	-	1,734	1,600	425	128	3	-	-			
L.V. No. 6 Vein No. 2 Slope	Schuylkill	208	426	510	-	1,144	800	-	79	3	-	-			
L. V. No. 3 Vein Slope	Schuylkill	10	38	53	-	101	50	-	29	3	-	-			
Shomper Breaker Total	Dauphin	-	-	-	-	-	-	-	201	2	-	-			
Smeltz Coal Co. No. 7 Vein Slope	Dauphin	533	1,109	1,337	-	2,979 w	2,450	425	11	-	-	-			
Split Vein Coal Co., Inc. Middle Split Slope	Schuylkill	640	1,779	698	8	3,125 x	5,200	100	234	3	-	-			
Starnowsky & Miller Coal Co. Buck Mountain Slope	Schuylkill	465	2,042	19,089	193	21,789 y	3,100	200	305	11	-	2			
Strohecker Coal Co. Strohecker Breaker	Dauphin	-	-	267	2	269 a	200	25	30	3	-	-			
Strohecker Breaker	Dauphin	-	-	-	-	-	-	-	297	8	-	-			

		District 16 Production - net tons				Pounds perm- sible ex-		Pounds dynamite used		Days worked		Fatal acci- dents		Non- fatal acci- dents	
Operators and Collieries	County	Shipped to market		Sold	Used at	Total production	sible ex- plosives used	dynamite used	Days worked	Empl- oves	Fatal acci- dents	Non- fatal acci- dents			
		By railroad	By truck	to local trade	to colliery for steam and heat										
Superior Preparation Co., Inc. Superior Breaker	Schuylkill	-	-	-	-	-	-	-	308	10	-	-			
Underkoffler Coal Co. Buck Mountain Slope	Dauphin	-	-	2,978	30	3,008	2,100	-	236	3	-	-			
Underkoffler Breaker Total	Dauphin	-	-	2,978	30	3,008 a	2,100	-	234	24	-	-			
Valley Construction Co. L. V. No. 6 Vein Slope	Dauphin	-	-	-	-	- z	-	-	17	3	-	-			
White's Vein Coal Co. White's Vein Slope	Schuylkill	671	970	745	2	2,388 o	4,000	-	213	4	-	-			
Williamson Coal Co., Inc. Skidmore Slope	Schuylkill	14,879	31,256	14,648	125	60,908 aa	42,550	5,000	298	20	-	4			
Wolfe Coal Co. No. 7 Vein Slope	Dauphin	-	-	63	1	64 a	25	-	32	2	-	-			
District Total		57,252	160,202	93,754	1,135	312,343	166,631	12,375	226	301	3	23			

- NOTE: (a) All coal prepared at Underkoffler Breaker. (1) 43 tons prepared at Superior Breaker  
 (b) 11,458 tons prepared at Superior Breaker 1,450 tons prepared at Kocher Breaker - District 15  
 (c) 543 tons prepared at Legal Breaker - District 15 7,222 tons prepared at Kocher Breaker - District 15  
 (d) All coal prepared at Kocher Breaker - District 15. (m) 60 tons prepared at Underkoffler Breaker  
 (e) 1,437 tons prepared at Schneck Breaker - District 14 72 tons prepared at Oakwood Breaker - District 14  
 (f) 6,313 tons prepared at Legal Breaker - District 15 (n) 4,695 tons prepared at Pine Creek Breaker  
 (g) 3,169 tons prepared at Kocher Breaker - District 15 702 tons prepared at Kocher Breaker - District 15  
 (h) All coal sold unprepared to Pennsylvania Power & Light Co. (o) All coal prepared at Strohecker Breaker.  
 (i) 1,407 tons prepared at Pine Creek Breaker (p) 11,130 tons prepared at Strohecker Breaker  
 (j) 3,175 tons prepared at Legal Breaker - District 15 2,514 tons prepared at Pine Creek Breaker  
 (k) 389 tons prepared at Kocher Breaker - District 15 (q) 6,100 tons prepared at Redding Breaker - District 11  
 (l) Worked 13 days opening mine - no production of coal. 882 tons prepared at Swift Breaker - District 11  
 (m) All coal prepared at Superior Breaker. 20 tons prepared at Schneck Breaker - District 14  
 (n) All coal prepared at Oakwood Breaker - District 14. (r) All coal prepared at Fronk Breaker.  
 (o) Ceased operating in April 1969. (s) All coal prepared at Meadowbrook Washery.  
 (p) 6,953 tons prepared at Strohecker Breaker (t) 4,856 tons prepared at Pine Creek Breaker  
 (q) 26,241 tons prepared at Underkoffler Breaker 1,161 tons prepared at Superior Breaker  
 (r) 310 tons prepared at Superior Breaker 1,049 tons prepared at Kocher Breaker - District 15  
 (s) 52 tons prepared at Pine Creek Breaker (u) All coal prepared at Pine Creek Breaker.  
 (t) 234 tons prepared at Kocher Breaker - District 15 (v) 1,245 tons prepared at Franklin Breaker - District 14  
 (u) 2,279 tons prepared at Schneck Breaker - District 14 609 tons prepared at Legal Breaker - District 15  
 (v) 667 tons prepared at Oakwood Breaker - District 14 518 tons prepared at Schneck Breaker - District 14  
 999 tons prepared at Kocher Breaker - District 15

Operators and Collieries		County	District 16				Pounds				Fatal fatal		
			Production - net tons				sible ex-				Fatal fatal		
			Shipped to market	Sold to	Used at	Total		Pounds		Days	Empl-	acci-	acci-
			By	local	for steam	production		dynamite		worked	eyes	dents	dents
			railroad	truck	trade	and heat		used		used			
NOTE: (w)	All coal prepared at Shomper Breaker					(2) Worked only 17 days (Repair Work) no production of coal.							
(x)	1,966 tons prepared at Strohecker Breaker					(aa) 31,506 tons prepared at Pine Creek Breaker							
	969 tons prepared at Legal Breaker - District 15					24,982 tons prepared at Strohecker Breaker							
	190 tons prepared at Franklin Breaker - District 14					3,067 tons prepared at Underkoffler Breaker							
(y)	19,126 tons prepared at Underkoffler Breaker					1,353 tons prepared at Kocher Breaker - District 15							
	1,693 tons prepared at Superior Breaker												
	970 tons prepared at Split Vein Breaker - District 11												

\*\*\*

**ANTHRACITE  
OPERATORS**

## COMMONWEALTH OF PENNSYLVANIA

## DEPARTMENT OF MINES AND MINERAL INDUSTRIES

## ANTHRACITE OPERATORS--YEAR 1969

Dist- rict	Operator	General Manager	Address	Zip Code
12	A. & D. Coal Co. DM	A. Androkitis	310 Elizabeth St.	Tamaqua 18252
8	A. D. G. Coal Co. DM	Joseph Alemeda		Lavelle 17943
16	A. & P. Coal Co. DM	Joseph Reho	130 W. Broad St.	Williamstown 17098
5	Ace Anthracite, Inc. B bk	John Santioni	419 Center Street	Taylor 18517
5	Ace Coal Co. B	W. Simoncelli	300 Main Street	Peckville 18452
11	Ace Coal Sales BP	Walter Mudry	1349 Chestnut St.	Kulpmont 17834
16	Acme Coal Co. DM	Michael Suchar	130 W. Broad St.	Williamstown 17098
12	Adams Co., Inc., Robert B. bk	Robert B. Adams	P. O. Box 693	Pottsville 17901
10	Alarcon Coal Co. DM	Frank Alarcon	402 Melrose St.	Keiser 17832
9	Al-Mar Coal Co. DM	Alber Deitz	436 W. Third St.	Mt. Carmel 17851
5	American Silt Processing Co. W bk	Peter Brojak		Archbald 18403
9	Ashland Community Enterprises DM	Emil R. Ermert	702 Center St.	Ashland 17921
10	B. & B. Coal Co. DM	Frank Barella	513 West Fourth St.	Mt. Carmel 17851
9	B. & B. Coal Co. DM	N. Anascavage	934 Tharp Street	Shamokin 17872
14	B. & C. Coal Co. DM	Willard Clark	R. D. 1	Hegins 17938
7	B-D Mining Co. W bk	G. C. Hower		Gilberton 17934
14	B. & F. Coal Co. DM	F. Neumeister		Ashland 17921
15	B. & H. Coal Co. DM	Eugene Hawk	R. D.	Fine Grove 17963
16	B. & M. Coal Co. DM	Wayne Moyer		Valley View 17983
16	B. & P. Coal Co. DM	John Perhach	W. Market Street	Williamstown 17098
9	B. & S. Coal Co. DM	B. Blascovich	Box 208-A, R.D. 1	Shamokin 17872
11	Bank Coal Co., Inc. DM	E. Narcavage	P. O. Box 164	Mt. Carmel 17851
1-5	Barca Coal & Land Co. B bk S	Louis Falzone	50 Wyoming Ave.	Wyoming 18644
5	Baumann, John C. bk	J. C. Baumann	P. O. Box 505	Carbondale 18407
4	Bell Coal Co. S	A. Kovalchick	P. O. Box 251	Brockton 17925
10	Bell Coal Co. DM	George Feaster, Jr.	551 Market St.	Trevorton 17881
12	Bernitsky Coal Co. BP DM	J. Bernitsky		Middleport 17953
12	Bernitsky & Stenulis Part. DM	Albert Bernitsky	17 Water Street	New Phila. 17959
7	Blaschak Coal Co., Inc. B DM	Edward Razzis	St. Nicholas	Mahanoy City 17948
1	Bliss Coal Co. S CP	Carl Bliss	P. O. Box 345	Mildred 18632
4-13-	Blue Bell Enterprises, Inc.	J. W. Dutcavage	720 Lytle Street	Minersville 17954
14-15	S BP bk			
1-5-6	Blue Coal Corp. B bk DM S	Isadore Berk	101 S. Main Street	Ashley 18706
13	Bosack Coal Co. DM	Frank Bosack, Jr.	R.D. 2, Box 788	Pottsville 17901
8	Botella Coal Co., James bk	James Botella	117 Williams St.	Girardville 17935
4	Bridy, Inc. S	Edward A. Bridy	237 W. Girard St.	Atlas 17811
2	Brook Contracting Corp. S	C. E. Wezner	127 W. Noble St.	Hazleton 18201
12	Bubel Mining Co., Inc. DM	Michael Bubel	P. O. Box 129	Brockton 17925
3	Buck Coal Co. S	John Miller	427 W. Avenue	Mt. Carmel 17851
7	Buckley Coal Corp. B	Norman James	R. D. 2	Weatherly 18255
8	Burnrite Coal Co. DM	Wm. Reiff	803 Walnut Street	Ashland 17921
11-15	Bush Coal Co. DM	Earl Bush	1404 E. Grand St.	Tower City 17980
5	C. B. M. Coal Co. bk	Eugene Bartoli	559 E. Northampton	Wilkes-Barre 18703
13	C. L. M. Partnership bk	J. Lazarchick	R. D. 1, Box 72	Pottsville 17901
4-13	C. L. S. Coal Co. S bk B	D. Roderick	P. O. Box 296	Branchdale 18201
9	C. & P. Coal Co. DM	R. A. Pittello	201 S. Vine St.	Mt. Carmel 17851
1	C. & S. Excavating Co. S	Peter Corazzi	101 E. Drinker St.	Dunmore 18512
7	Capparell Coal Co., Inc. B	Vincent Capparell		Shenandoah 17976
3-7-8	Capparell Strip & Const. Co. S bk	Martin Capparell	136 E. Fifth St.	Hazleton 18201
1	Carbondale Coal Co. S CP	John Gillen	78 Cottage St.	Carbondale 18407
12	Cass Contracting Co. BP	F. J. Ryan	R. D. 2	Pottsville 17901
10	Chestnut Coal Co. DM	Stephen Shingara	R. D. 3	Sunbury 17801
15	Chyke Coal Co. DM	Charles Chyke	S.R. Box 54	Tremont 17981
6	Ciarafoni Coal Co., Inc. DM	Albert Ciarafoni	580 Market Street	Kingston 18704
15	Clark Coal Co. DM	Clark Maurer, Jr.		Hegins 17938
10	Clay Coal Co. DM	Ellsworth Libby	690 Bear Valley Ave	Shamokin 17872
5	Coalbrook Iron & Metals bk	J. C. Baumann	P. O. Box 505	Carbondale 18407
7	Coleby Coal Co., Inc. W bk	G. C. Hower		McAdoo 18237
14	Colket Coal Co. DM	J. Messaros	School Row	Branchdale 17923





Dist- rict	Operator	General Manager	Address	Zip Code
8	Mickey Coal Co. DM	J. Mickatavage	40 Oakland Ave.	Ashland 17921
14	Miller Coal Co. DM	Daniel Miller	Valley View	17983
3	Minel, Inc. S	S. Korenkiewicz	Box 141-K, R. D. 1	Shamokin 17872
13	Minersville Coal Co. BP	Leo Strenkoski	Drawer N	Minersville 17954
15	Minnick Coal Co. DM	Gene Minnick	Pine Grove	17938
5	Moffat Premium Anth., Inc. B	Michael Costanzo	78 Cottage Street	Carbondale 18407
4	Mohan Co., James E. S	James E. Mohan	277 Chestnut Street	Ashland 17921
11	Moore Coal Co. DM	Claude A. Moore	Box 281, R. D. 2	Shamokin 17872
8	Morack Coal Co. DM	John Morack	407 N. Vine Street	Mt. Carmel 17851
10	Motto Partnership DM	Frank Motto	P. O. Box 15	Excelsior 17825
4	Mountain Anthracite Co. S	Marlin Zimmerman	Ravine	17966
5	Mountain Coal Co. DM	Thomas Supey	55 W. Sixth St.	Wyoming 18644
12	Mountain Side Coal Co. BP	Roy Habel	54 1/2 Broad Street	Tamaqua 18252
14	Mountain Top Coal Co. DM	William Vesay	515 St. Francis St.	Minersville 17954
10	Mountain View Coal Co. DM	James Foulds	1440 W. State St.	Shamokin 17872
12	My Own Coal Co. DM	Peter Gregas	Girardville	17935
11	N. & L. Coal Co. DM	A. J. Novrocki	Box 212, R. D. 1	Paxinos 17860
14	Neumeister Coal Co., J. DM	James Neumeister	Box 66, R. D. 1	Ashland 17921
15	Ney & Lehman Coal Co. DM	Carl Ney	Valley View	17983
12	Niadna Coal Co., Frank DM	Frank Niadna	Coaldale	18218
16	No. 4 Coal Co. DM	Frank Lucas	Main Street	Hegins 17938
3	North Line Coal Co. S	C. Wayne Troxell	Box "E"	Shamokin 17872
1-5	Northwest Mining Co., Inc. S B	John Gillen	78 Cottage Street	Carbondale 18407
5	O. S. C. Co. bk	A. J. Kaufman	S. Church Street	Carbondale 18407
14	Oakwood Coal Co. BP	David Deaven	R. D. 3	Pine Grove 17963
13	Old Mill Coal Yard B bk	Raymond Stein	P. O. Box 172	Llewellyn 17944
13	Olenick Brothers Coal Co. B bk	Nicholas Olenick	Minersville	17954
7	Olman & Co. DM	Joseph Olman	46 N. Tamaqua St.	McAdoo 18237
5	Opalka Brothers DM	Adam Opalka	438 Madison Ave.	Jermyn 18433
5	O'Toole, John F. CP	John F. O'Toole	208 S. Hyde Park	Scranton 18504
5	Olyphant Premium Anth., Inc. bk CP	Samuel Leonard	P. O. Box 282	Olyphant 18447
13	P. & H. Coal Co. DM	Walter Pewor	R. D. 2	Pottsville 17901
10	P. & R. Coal Co. DM	Joseph Rutkowski	827 Scott Street	Kulpmont 17851
4	Pacine Coal Co. S	Michael Pacine	Water Street	Cumbola 17930
15	Panther Head Coal Co. DM	Charles Butensky	Branchdale	17923
1	Pasternak Brothers S	John Pasternak	419 Center Street	Taylor 18642
10	Peacock Coal Co. DM	Robert Albert	1793 Tioga Street	Shamokin 17872
5	Pentbrook Coal Co. B bk	Richard Fabri	729 Main Street	Archbald 18403
5	Perry Coal Sales Co., Inc. bk CP	Thomas Perry	1416 Penn Avenue	Scranton 18509
11	Phillips Coal Co. DM	Lewis H. Phillips	Box 133, R. D. 1	Shamokin 17872
7-12	Phoenix Contracting Co. bk B	W. L. Jones, Jr.	R. D. 2	Pine Grove 17938
16	Pine Creek Coal Co. BP	Ronald Klinger	Spring Glen	17978
10	Pine Line Coal Co. DM	Harry Wallick	300 S. Market St.	Shamokin 17872
7	Pleasant Hill Coal Co. DM	Peter Smulligan	Vulcan	Barnesville 18214
8	Polcovich Coal Co. DM	John Polcovich	103 Center Street	Centralia 17927
6	Pollock, Inc., Ken bk	George Sorber	Route 11	Hunlock Creek 18601
5	Pompey Coal Co. bk	Charles Pompey	P. O. Box 91	Jessup 18434
8	Poponiak Brothers Coal Co. DM	John Poponiak	116 Warsaw Street	Keiser 17832
5	Poppo Coal Sales Co., Raymond bk	Raymond Poppo	300 Newrose Bldg.	Pittston 18640
12	Premium Fine Coal Co., Inc. bk	John Federak	202 Hunter Street	Tamaqua 18252
3	R. B. F. Coal Co. S	Robert Fanella	P. O. Box 454	Mt. Carmel 17851
15	R. & K. Coal Co. DM	George Rigdosh	Wiconisco	17097
9	R. & L. Coal Co. DM	Francis Revenis	528 Locust Ave.	Centralia 17927
12	R. & R. Coal Co. BP	Ronnie Roynick	521 Oak Street	Jim Thorpe 18229
4	R. & S. Coal Co. S	Thomas Stewart	456 Sunbury St.	Minersville 17954
5-7	Racho, George bk	C. E. Wezner	P. O. Box 98	Hazleton 18201
12	Randolph Coal Co. W bk	Paul J. Connors	P. O. Box 173	Pottsville 17901
9-10	Ranshaw Transportation & Auto Wreckers Co. W bk	Leonard Chapleski	P. O. Box 5	Ranshaw 17866
1	Raymond Colliery Co. S	John Gillen	78 Cottage Street	Carbondale 18407
3-4-7-9	Reading Anthracite Co. S	G. A. Schnee	200 Mahantongo St.	Pottsville 17840
11-12-13	S BP bk W			
9-13	Reichwein & Beury Coal Co. B DM	Harold Reichwein	Box 261, R. D. 1	Ashland 17921
11	Reidinger Coal Service, Inc. BP	C. W. Troxell	Box L.Y.	Shamokin 17872
16	Reiner Coal Co. DM	William Reiner	837 E. Grand St.	Tower City 17980
14	Remniger & Partners Coal Co. DM	Theodore Remniger	Zerbe	17981
8	Ron Lee Coal Co. bk	Elwood Swank	R. D. 1	Paxinos 17860
3-10	Rosini Coal Co. S B	Evoaldo Rosini	P. O. Box 184	Shamokin 17872
13	S. & B. Coal Co. DM	Edward Sorokach	P. O. Box 14	Minersville 17954
14	S. B. K. Coal Co. DM	Mark Shade		Hegins 17938

Dist- rict	Operator	General Manager	Address	Zip Code
1	S. B. P. Coal Co. S CP	Darrel Keihl	P. O. Box 88	Mildred 18632
10	S. & C. Coal Co. DM	Wm. J. Stellar	1302 Scott St.	Kulpmont 17834
3	S. & D. Coal Co. S	S. Shalamanda	R. D. 1	Ashland 17921
8	S. & D. Coal Co. DM	Ernest DiRenzo	330 Melrose St.	Keiser 17832
13	S. & F. Coal Co. DM	John Federovich	Main Street	Seitzler 17974
16	S. & K. Coal Co. DM	Palmer Klinger		Spring Glen 17978
15	S. & M. Coal Co. DM	Daniel Shade		Valley View 17983
13	S. & M. Coal Co. DM	John Simodejka		Minersville 17954
3	S. & S. Contracting Co. S	Edward Sosnoskie	219 E. Melrose St.	Keiser 17832
16	S. & T. Coal Co. DM	Michael Scheib		Tremont 17981
15	S. & W. Coal Co. DM	C. L. Williamson		Valley View 17983
9	Sanders Coal Co. DM	Walter Anascavage	1015 W. Pine St.	Shamokin 17872
3-9	Savitski Bros. Coal Sales B DM S	Joseph Savitski	Forest & Mulberry	Atlas 17811
12	Schickram, William bk	William Schickram	130 Clay Street	Tamaqua 18252
14	Schneck Coal Co., Thomas W. BP	Thomas W. Schneck	R. D. 1	Pine Grove 17963
4	Schock Co., Norman C. S	Norman C. Schock		Tuscarora 17982
4-13	Schuyldill Contracting Co. S bk	Frank J. Ryan	P. O. Box 360 1/2	Pottsville 17901
14	Schwartzlander Coal Co., Inc. DM	J. Schwartzlander	31 North Street	Tremont 17987
9-13	Scott Coal Co. DM	Steve Forgotch	Shaft	17975
5	Scranton Excavating Co. bk	Rocco Domiano	3 E. McClure Ave.	Old Forge 18518
13	Seanawaitis Bros. Coal Co. DM	A. Seanawaitis	530 Lytle Street	Minersville 17954
5	Sebastopol Coal Co. bk	A. Giarratano	P. O. Box 702	Pittston 18640
4	Seitzinger Bros. Leasing, Inc. S	Wm. Seitzinger	Blvd. & Mill Creek	Pottsville 17901
15	Shade Coal Co. DM	Alvin Shade		Valley View 17983
15	Sharp Mountain Coal Co. DM	Henry Reber		Tremont 17987
16	Shomper Coal Co. DM B	R. H. Shomper	305 Vine Street	Williamstown 17098
5-6	Silverbrook Anthracite, Inc. B bk	Theodore Kassa	322 Simpson St.	Dupont 18641
12	Silver Creek Coal Co., Inc. BP	A. Bonchack	P. O. Box 246	New Phila. 17959
13	Siminitus Coal Co. DM	E. Siminitus	R. D. 1, Box 99 1/2	Pottsville 17901
12	Skrupnek Coal Co. DM	Daniel Skrupnek	R. D. 1	New Ringgold 18252
11	Slo-Burn Coal Co., Inc. W	Alex Flohoskie	P. O. Box 164	Mt. Carmel 17851
16	Smeltz Coal Co. DM	Joseph Shade	R. D. 1	Hegins 17938
13	Snyder Coal Co., Leroy DM	Leroy Snyder	R. D. 1	Lykens 17048
13	Sorokach Coal Co. DM	Edward Sorokach	Box 14	Minersville 17954
12	South Tamaqua Coal Pockets BP	Donald Warne	Tamaqua	18252
15	Spancake & Herring Coal Co. DM	Milton Spancake		Pine Grove 17963
3-10	Split Vein Coal Co., Inc. DM	Elwood Swank	Box 336-C, R. D. 1	Paxinos 17860
11-16	S BP DM			
11	Springfield Coal Co. DM	S. Korenkiewicz	Box 141-K, R. D. 1	Shamokin 17872
16	Stahl Coal Co. DM	John Stahl		Valley View 17983
15	Starnowsky & Miller Coal Co. DM	James H. Miller	R. D. 1	Millersburg 17061
7	Starwood Coal Corp. DM B	Alfred Peca	14 S. Main Street	Mahanoy City 17948
8-9-10	State Coal Co., Inc. B bk	G. M. Seiler	R. D. 1, Box 56	Ashland 17921
16	Strohecker Coal Co. BP	J. Strohecker	R. D. 1	Elizabethville 17023
13	Studlack Coal Co. DM	A. Studlack	314 New Castle St.	Minersville 17954
8	Sun Coal Co., Inc. B	Wm. J. Farley	215 N. Ninth St.	Ashland 17921
10	Sunshine Coal Co. B	R. Steinhart	P. O. Box 502	Trevorton 17881
16	Superior Preparation Co., Inc. BP	Roy Blyler		Valley View 17983
6	Susquehanna Coal Co. BP	L. G. Lebo	8 W. Main Street	Nanticoke 18634
8	Swamp Coal Co. DM	E. Lashendock	201 E. Warsaw St.	Keiser 17832
4-13	Swatara Coal Co. BP S	W. P. Parker, Jr.	P. O. Box "G"	Minersville 17954
15	Sweet Water Coal Co. DM	Leonard Harner		Sacramento 17968
11	Swift Coal Sales BP	Adam Swift	1100 Center Street	Shamokin 17872
12	T. & E. Coal Co. DM	E. Yeneshosky		New Phila. 17959
11	T. & L. Coal Co. DM	William Lytle, Jr.	Box 367, R. D. 2	Shamokin 17872
11	T. & M. Coal Co. DM	Thomas J. Morris	905 W. Pine St.	Shamokin 17872
5	Tammini Construction Co. bk	Alfred Tammini	57 Sharp Street	Kingston 18704
12	Thirty Slope, Inc. DM	Edmund Watkins	P. O. Box 229	Shenandoah 17976
14	Three Par Coal Co. DM	Donald Batz	124 Main Street	Pine Grove 17963
14	Tobin Coal Co. DM	Allen Tobin	530 Colliery Ave.	Tower City 17980
13	Tokarchek Coal Co. DM	Michael Tokarchek	214 Laurel Street	Minersville 17954
10	Tower Coal Co. DM	George Feaster, Jr.	551 Market Street	Trevorton 17881
12	Tracy Coal Co. DM	Michael Dudash	R. D. 3	Pottsville 18452
16	Twin Oaks Coal Co. DM	Leonard Machesic	R. D. 1	Paxinos 17860
10	Underkoffler Coal Co. BP DM	G. Underkoffler		Williamstown 17098
7	Valent Coal Co., Frank S	Frank Valent	360 S. Center St.	Pottsville 17901
4	Valley Coal Co. B	Stanley Lech	R. D. 2	Tamaqua 18252
16	Valley Construction Co. DM	George Fronk		Valley View 17983
4	Valley Enterprises, Inc. S	Joseph Petrole	R. D. 2	Tamaqua 18252
5	Vullo & Vantaggi bk	Alfred Vantaggi	207 Main Street	Pittston 18640

Dist- rict	Operator	General Manager	Address	Zip Code
4	W. & W. Construction Co. S	Jos. Walacavage	P. O. Box 548	Pottsville 17901
7	Wesner Coal Co. B	W. J. Wesner	R. D. 2	Tamaqua 18252
10	West Cameron Coal Co. DM	Robert Erb	603 Market Street	Shamokin 17872
13	West West Coal Co. DM	Leo Strenkoski	P. O. Drawer I	Minersville 17954
12	Whippoorwill Coal Co. DM	Jos. Tarconish, Jr.	Washington Street	Middleport 17953
8	White Birch Coal Co. DM	M. Raczowski	P. O. Box 229	Shenandoah 17976
7-8	White Coal Co. DM bk	Wilbur White	P. O. Box 47	Ashland 17921
16	White's Vein Coal Co.	Clayton Shade		Sacramento 17968
11	Whitney Coal Co., Inc. DM	Charles Greco	1054 Scott St.	Kulpmont 17834
12	Williams Partnership DM	Evan Williams		New Phila. 17959
16	Williamson Coal Co., Inc. DM	A. Williamson		Valley View 17983
13	Winne Land Co. W	Robert Bickel	R. D. 2, Box 360 1/2	Pottsville 17901
16	Wolfe Coal Co. DM	William Wolfe	307 North Street	Williamstown 17098
15	Wolfgang Coal Co. DM	Marlin Wolfgang	169 Wisconsin St.	Tower City 17980
13	Woratyla Coal Co. DM	Andrew Woratyla	P. O. Box 2	Llewellyn 17944
13	Woodside Mining Co. DM	John Olenick	R. D. 1, Box 117-A	Pottsville 17901
12	Zakrewsky Coal Co. DM	Peter Zakrewsky	Park Crest	Barnesville 18214
9	Zanella Brothers Coal Co. DM	Stephen Zanella	34 Spruce Street	Ashland 17921
15	Zimmerman Coal Co., Marlin DM	Marlin Zimmerman		Ravine 17966
8	Zukus Coal Co. DM	Joseph Zukus	557 W. Girard St.	Atlas 17811

NOTE: DM - Denotes Deep Mines  
 S - Denotes Strip Mine Operations  
 B - Denotes Breakers  
 BP - Denotes Breaker Preparation Only  
 bk - Denotes Bank Operations  
 CP - Denotes Cleaning Plant  
 W - Denotes Washery

\* \* \* \* \*

# ANTHRACITE BREAKERS, WASHERIES AND PREPARATION PLANTS

COMMONWEALTH OF PENNSYLVANIA  
DEPARTMENT OF MINES AND MINERAL INDUSTRIES  
ANTHRACITE DIVISION  
Breakers, Washeries and Preparation Plants

1969				
Dist- rict	Preparation Plant	Company	Location	Zip Code
5	Ace Breaker	Ace Anthracite, Inc.	Blakely	18512
11	Ace Breaker	Ace Coal Sales	Weigh Scales	17872
7	B-D Fine Coal Plant	B-D Mining Co.	Mahanoy Twp.	17958
7	Beaver Brook Fine Coal Plant	Huss, George	Hazle Twp.	18704
12	Beechwood Cleaner Plant	Reading Anthracite Co.	Seltzer	17974
12	Bernitsky Breaker	Bernitsky Coal Co.	Middleport	17953
12	Black Heath Breaker	Phoenix Contracting Co.	Cressona	17929
7	Blaschak Breaker	Blaschak Coal Co., Inc.	St. Nicholas	17948
1	Bliss Crushing Plant	Bliss Brothers Coal Co.	Cherry Twp.	18632
5	Booth Cleaning Plant	Barca Coal & Land Co.	Mildred	18632
12	Brockton Breaker	R. & R. Coal Co.	Brockton	17925
7	Candleton Breaker	Coleby Coal Co., Inc.	Gilberton	17934
10	Carbon Run Breaker	Rosini Coal Co.	Shamokin	17872
11	D. & Z. Breaker	D. & Z. Coal Co.	Weigh Scales	17872
8	Diamond Breaker	Sun Coal Co., Inc.	Atlas	17811
11	Diminick Breaker	Diminick Coal Sales	Paxinos	17860
13	DiBenzo Breaker	DiRenzo Coal Co.	Llewellyn	17944
14	Donaldson Breaker	Industrial Coal Sales Co.	Donaldson	17981
7	Eckley Breaker	Buckley Coal Corp.	Eckley	
5	Franklin Cleaning Plant	Lehigh Valley Anthracite, Inc.	Walkes-Barre	18702
14	Franklin Hydrotated Breaker	Franklin Coal Co.	Ravine	17966
11	G. M. P. Breaker *	Bar-Mac Coal Co., Inc.	Weigh Scales	17872
10	Glen Burn Breaker	Glen Burn Colliery, Inc.	Shamokin	17872
6	Glen Lyon Breaker	Susquehanna Coal Co.	Glen Lyon	18617
13	Glenn Worth Breaker	Glenn Worth Coal Co.	Cressona	17929
7	Gowen Breaker	Gowen Coal Co.	Fern Glen	18241
7	Gowen Cleaning Plant	Gowen Coal Co.	Fern Glen	18241
12	Greenwood Breaker	Greenwood Mining Co.	Rahn Twp.	19426
12	Greenwood Fine Coal Plant	Greenwood Mining Co.	Coaldale	18218
11	H. J. & H. Breaker	H. J. & H. Coal Co., Inc.	Trevorton	17881
5	Harry E. Breaker	Lehigh Valley Anthracite, Inc.	Swoyersville	18704
7	Hazleton Shaft Breaker	Lehigh Valley Anthracite, Inc.	Hazleton	18201
7	Hazleton Shaft Cleaning Plant	Lehigh Valley Anthracite, Inc.	Hazleton	18201
7	Highland No. 5 Breaker	Jeddo-Highland Coal Co.	Foster Twp.	18642
13	Hillside Breaker	Hegins Coal Co.	Zerbe	17984
7	Honeybrook Breaker	Honeybrook Mines, Inc.	Audenried	18213
11	Hoover Breaker	Hoover Mining Co., Inc.	Paxinos	17860
5	Huber Breaker	Blus Coal Corporation	Ashley	18706
7	Jeddo No. 7 Breaker	Jeddo-Highland Coal Co.	Hazle Twp.	18704
15	Joliett Breaker	Lehigh Valley Anthracite, Inc.	Joliett	17981
11	K. & D. Breaker	K. & D. Coal Co.	Weigh Scales	17872
12	K. & P. Breaker	K. & P. Coal Co.	Minersville	17954
5	Kassa Breaker	Silverbrook Anthracite, Inc.	Laflin	18702
9	Kerrigan Table Plant	Kerrigan, Paul	Ashland R.D. 1	17921
15	Kocher Breaker	Kocher Coal Co., Inc., Leon E.	Good Spring	17983
15	Legal Breaker	Legal Coal Co.	Good Spring	17983
7	Lion Breaker	Lehigh Valley Anthracite, Inc.	Hazleton	18201
13	Live Oak Breaker	Live Oak Coal Co.	Primrose	17954
12	Lowland Washery	Manbeck Dredging Co., Inc.	Landingville	17942
11	Lower Region Washery	Lower Region Colliery, Inc.	Trevorton Road	17881
12	Lucanna Fine Coal Plant	Ginther Coal Co.	Cumbola	17930
16	Iykens Breaker	Fronk Coal Co., George	Iykens	17948
13	Iytle Washery	Winne Land Co.	Primrose	17954
9	Malho Breaker	Malho Coal Co.	Lavelle	17943
8	Mammoth Breaker	Lehigh Valley Anthracite, Inc.	Raven Run	17946
7	Maple Hill Cleaning Plant	Reading Anthracite Co.	Maple Hill	17976
13	Maple Spring Breaker	C. L. S. Coal Co.	Branchdale	17923
12	Marlin Breaker	Cass Contracting Co.	Marlin	17951

Dist- rict	Preparation Plant	Company	Location	Zip Code
5	Marvine Sizing Plant	Northwest Mining Co., Inc.	Scranton	18509
7	Mazaika Breaker	Mazaika Brothers Coal Co.	Rush Twp.	18252
16	Meadowbrook Washery	Meadowbrook Coal Co.	Iykens	17948
13	Minersville Breaker	Minersville Coal Co.	Llewellyn	17944
7	Morea Breaker	Lehigh Valley Anthracite, Inc.	Morea	17955
12	Mountain Side Breaker	Mountain Side Coal Co.	South Tamaqua	18252
12	No. 6 Washery	Manbeck Dredging Co., Inc.	Lansford	18232
12	Nesquehoning Cleaning Plant	Correale Construction Co.	Nesquehoning	18240
12	New St. Nicholas Breaker	Reading Anthracite Co.	Seltzer	17974
12	New St. Nicholas Fine Coal Plant	Reading Anthracite Co.	Seltzer	17974
14	Oakwood Breaker	Oakwood Coal Co., Inc.	Pine Grove	17963
13	Old Mill Breaker	Old Mill Coal Yard	Llewellyn	17944
13	Olenick Breaker	Olenick Brothers Coal Co.	Forestville	16035
5	Olyphant Cleaning Plant	Olyphant Premium Anthracite, Inc.	Dickson City	18519
5	O'Toole Sizing Plant	O'Toole, John F.	Moosic	18505
5	Penbrook Breaker	Penbrook Coal Co.	Archbald	18403
5	Perry Avoca Cleaning Plant	Perry Coal Sales Co., Thomas	Avoca	18641
16	Pine Creek Breaker	Pine Creek Coal Co.	Spring Glen	17928
12	Pine Forest Cleaner Plant	Reading Anthracite Co.	Seltzer	17974
12	Premium Fine Coal Plant	Premium Fine Coal Co., Inc.	South Tamaqua	18252
5	Prospect Cleaning Plant	Lehigh Valley Anthracite, Inc.	Plains	18705
12	Randolph Washery	Randolph Coal Co.	Port Carbon	17965
10	Ranshaw Washery	Ranshaw Transportation & Auto Wreckers Co.	Ranshaw	17866
5	Raymond Breaker	Northwest Mining Co., Inc.	Eynon	18718
9	Reichwein & Beury Breaker	Reichwein & Beury Coal Co.	Gordon	17921
11	Reidinger Breaker	Reidinger Coal Service, Inc.	Paxinos	17860
7	Rosa Breaker	Capparell Coal Co., Inc.	Shenandoah	17976
1	S. B. P. Crushing Plant	S. B. P. Coal Co.	Cherry Twp.	18632
7	St. Nicholas Fine Coal Plant	Reading Anthracite Co.	St. Nicholas	17948
12	Salem Creek Breaker	Lehigh Valley Anthracite, Inc.	Pottsville	17901
9	Savitski Breaker	Savitski Brothers Coal Sales	Atlas	17811
14	Schneck Breaker	Schneck Coal Co., Thomas W.	Pine Grove	17963
16	Shomper Breaker	Shomper Coal Co.	Williamstown	17098
12	Silver Creek Breaker	Silver Creek Coal Co., Inc.	New Phila.	17959
11	Slo-Burn Washery	Slo-Burn Coal Co., Inc.	Weigh Scales	17872
12	South Tamaqua Breaker	South Tamaqua Coal Pockets	South Tamaqua	18252
11	Split Vein Breaker	Split Vein Coal Co., Inc.	Weigh Scales	17872
7	Starwood Breaker	Starwood Coal Corp.	New Boston	17958
8	State Breaker	State Coal Co., Inc.	Strong	17879
16	Strohecker Breaker	Strohecker Coal Co.	Elizabethville	17023
10	Sunshine Breaker	Sunshine Coal Co.	Trevorton	17881
16	Superior Breaker	Superior Preparation Co., Inc.	Valley View	17983
13	Swatara Breaker	Swatara Coal Co.	Zerbe	17984
11	Swift Breaker	Swift Coal Sales	Paxinos	17860
5	Taylor Breaker	Moffat Premium Anthracite, Inc.	Taylor	18517
15	Tremont Breaker	Blue Bell Enterprises, Inc.	Tremont	17981
11	Trevorton Breaker	Reading Anthracite Co.	Trevorton	17881
16	Underkoffler Breaker	Underkoffler Coal Sales	Iykens	17048
7	Valley Breaker	Valley Coal Co.	Rush Twp.	18252
5	Waddell Washery	American Silt Processing Co., Inc.	Winton (Jessup)	18434
7	Wesner Breaker	Wesner Coal Co.	Rush Twp.	18252
15	Westwood Washery	Manbeck Dredging Co., Inc.	Jolliett	17981
5	Ziffenblatt Cleaning Plant	G. M. C. Energy Fuels	Duryea	18642

\* Formerly the Bar-Mac Breaker

# BITUMINOUS COAL DIVISION STATISTICAL REPORTS